

# PARCEL MAP NO. 32-60

IN THE UNINCORPORATED TERRITORY OF MONO COUNTY,  
CALIFORNIA

BEING A SUBDIVISION OF A PORTION OF THE SW 1/4 OF THE NE 1/4,  
AND THE SE 1/4 OF THE NW 1/4 OF SECTION 4, T4N, R25E, M.D.B.&M.

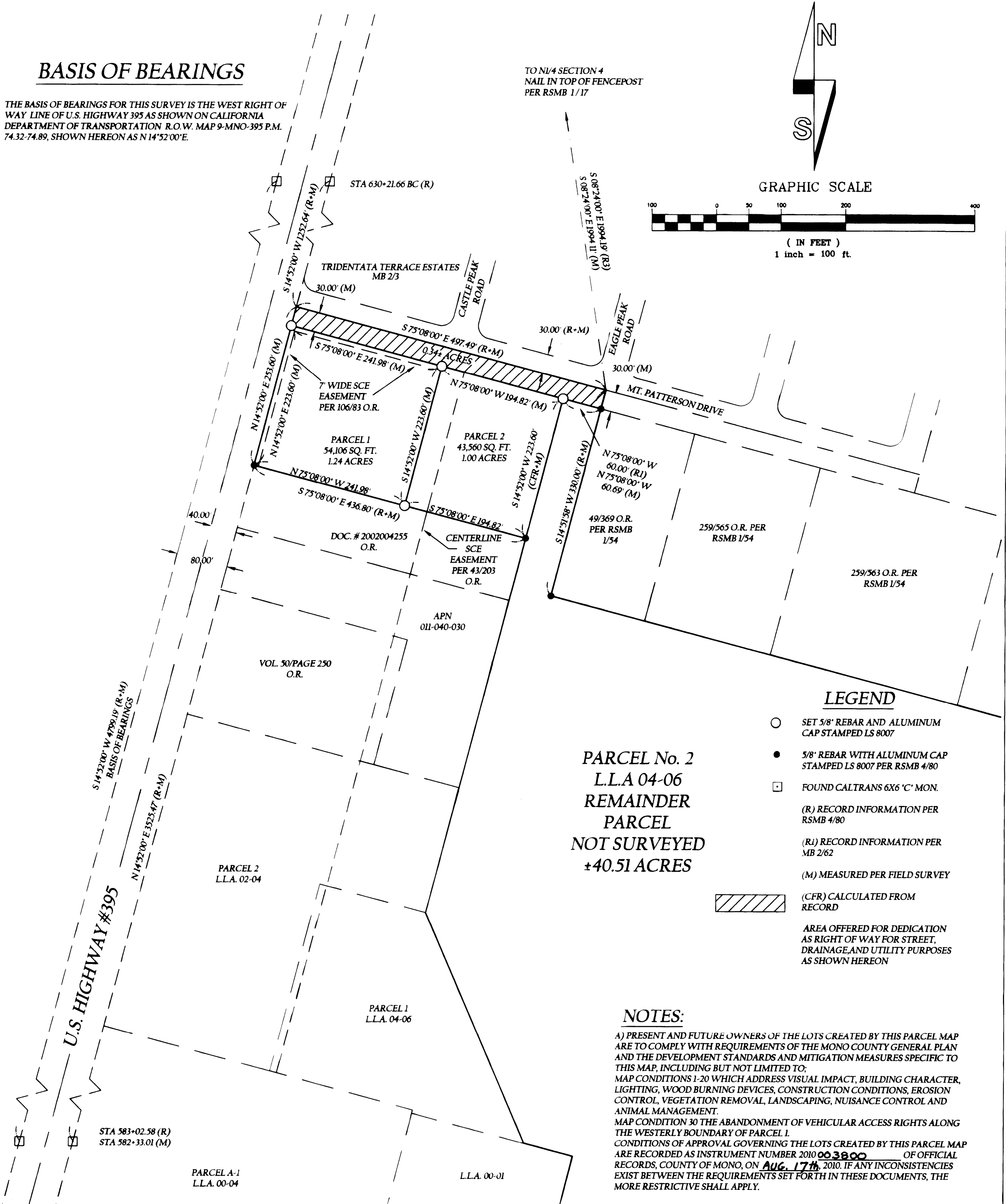
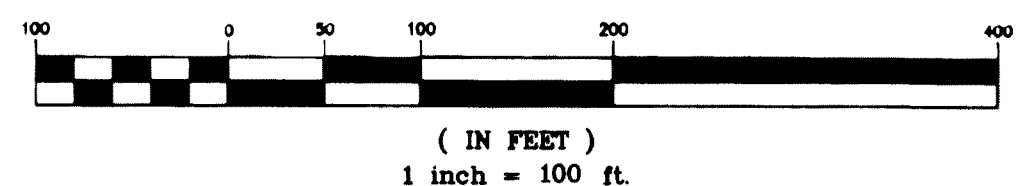
## BASIS OF BEARINGS

THE BASIS OF BEARINGS FOR THIS SURVEY IS THE WEST RIGHT OF  
WAY LINE OF U.S. HIGHWAY 395 AS SHOWN ON CALIFORNIA  
DEPARTMENT OF TRANSPORTATION R.O.W. MAP 9-MNO-395 P.M.  
74.32-74.89, SHOWN HEREON AS N 14°52'00"E.

TO NW 1/4 SECTION 4  
NAIL IN TOP OF FENCEPOST  
PER RSMB 1/17



GRAPHIC SCALE



## LEGEND

- SET 5/8" REBAR AND ALUMINUM CAP STAMPED LS 8007
- 5/8" REBAR WITH ALUMINUM CAP STAMPED LS 8007 PER RSMB 4/80
- FOUND CALTRANS 6X6 'C' MON.
- (R) RECORD INFORMATION PER RSMB 4/80
- (RI) RECORD INFORMATION PER MB 2/62
- (M) MEASURED PER FIELD SURVEY
- (CFR) CALCULATED FROM RECORD
- AREA OFFERED FOR DEDICATION AS RIGHT OF WAY FOR STREET, DRAINAGE, AND UTILITY PURPOSES AS SHOWN HEREON

## NOTES:

A) PRESENT AND FUTURE OWNERS OF THE LOTS CREATED BY THIS PARCEL MAP ARE TO COMPLY WITH REQUIREMENTS OF THE MONO COUNTY GENERAL PLAN AND THE DEVELOPMENT STANDARDS AND MITIGATION MEASURES SPECIFIC TO THIS MAP, INCLUDING BUT NOT LIMITED TO: MAP CONDITIONS 1-20 WHICH ADDRESS VISUAL IMPACT, BUILDING CHARACTER, LIGHTING, WOOD BURNING DEVICES, CONSTRUCTION CONDITIONS, EROSION CONTROL, VEGETATION REMOVAL, LANDSCAPING, NUISANCE CONTROL AND ANIMAL MANAGEMENT. MAP CONDITION 30 THE ABANDONMENT OF VEHICULAR ACCESS RIGHTS ALONG THE WESTERLY BOUNDARY OF PARCEL 1. CONDITIONS OF APPROVAL GOVERNING THE LOTS CREATED BY THIS PARCEL MAP ARE RECORDED AS INSTRUMENT NUMBER 2010 003800 OF OFFICIAL RECORDS, COUNTY OF MONO, ON AUG. 17th, 2010. IF ANY INCONSISTENCIES EXIST BETWEEN THE REQUIREMENTS SET FORTH IN THESE DOCUMENTS, THE MORE RESTRICTIVE SHALL APPLY.