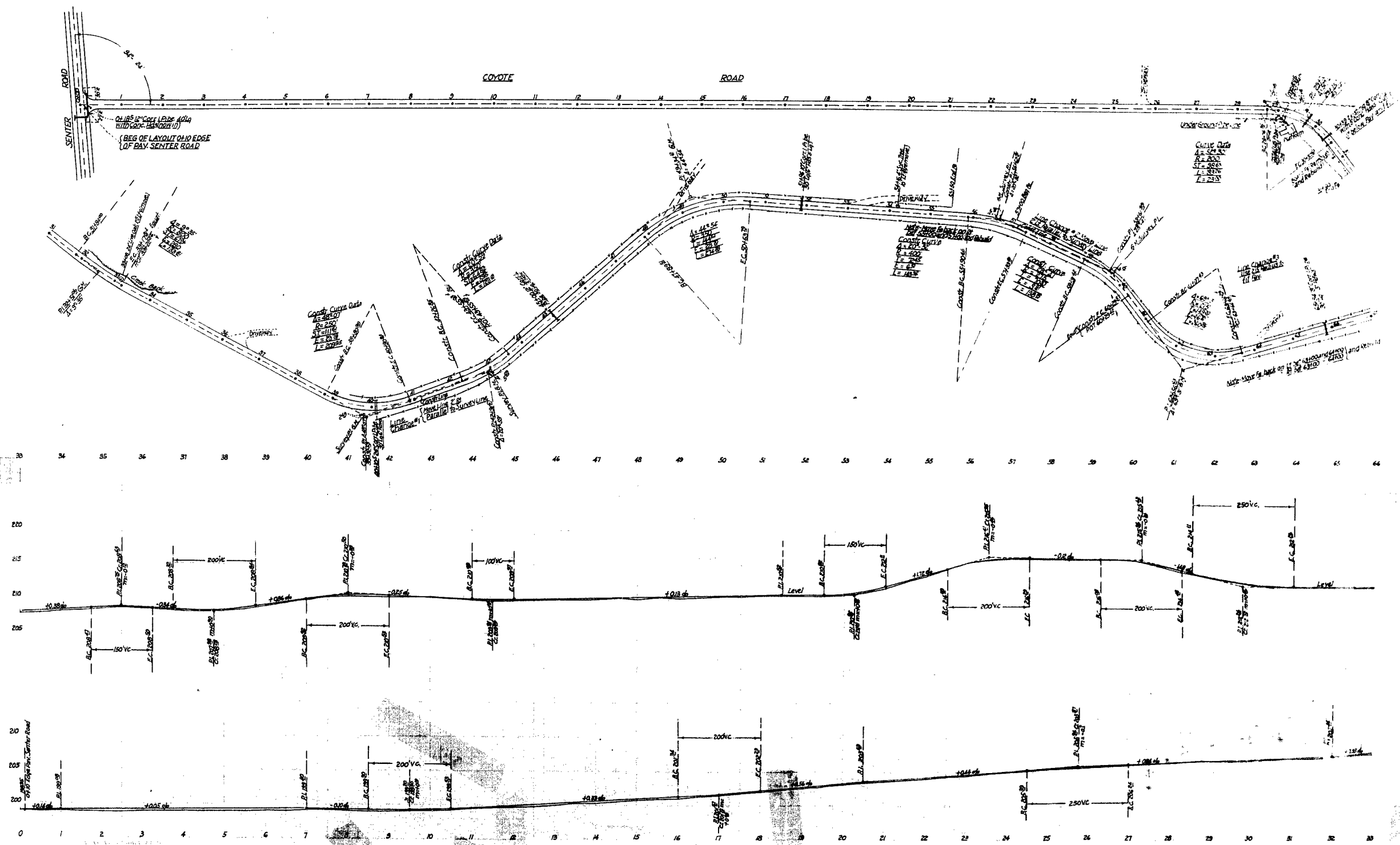


3521

MICROFILM

COYOTE ROAD FROM CENTER ROAD TO FORD ROAD  
Sheet 3 of 14 Sheets

3521

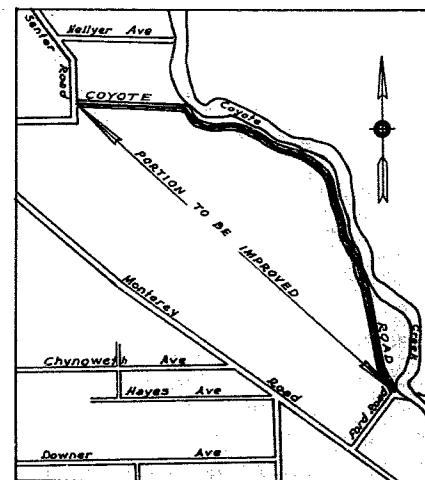


**PLAN**  
FOR THE IMPROVEMENT OF  
**COYOTE ROAD**  
From Senter Road to Ford Road  
IN  
**SUPERVISOR DISTRICT NO.2**

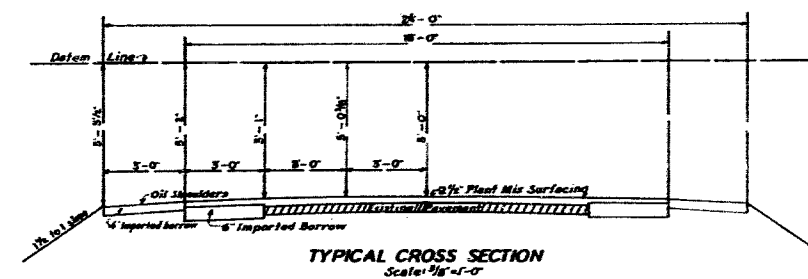
MAY, 1940

ROBERT B. CHANDLER  
County Surveyor

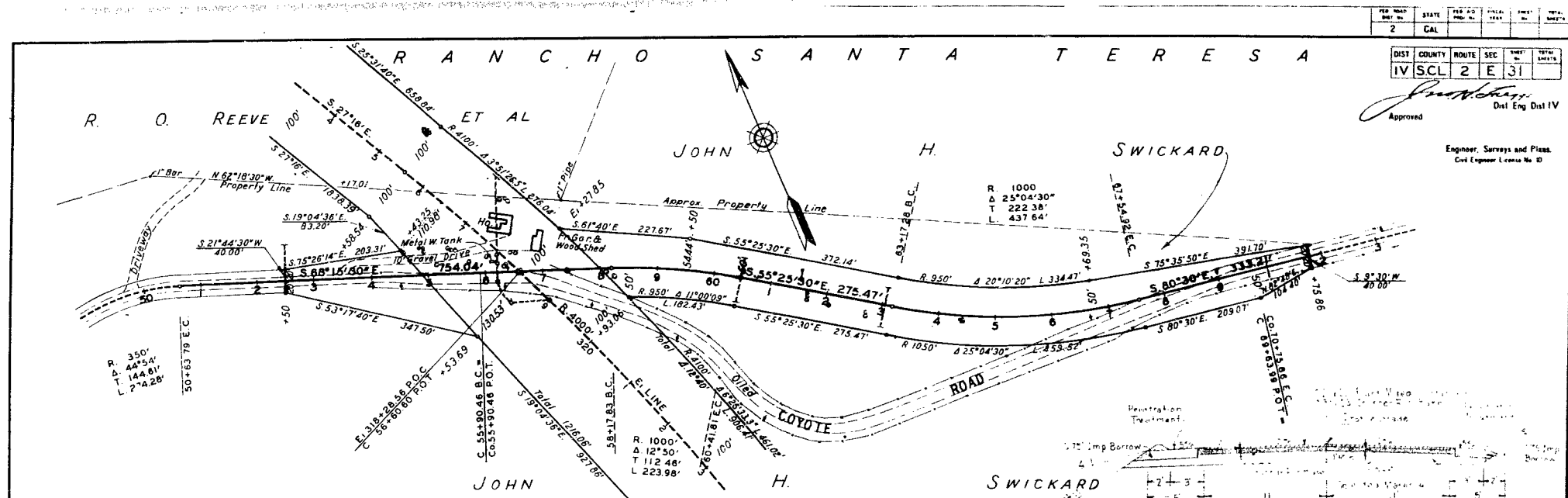
SCALES  
Plan: 1"=100'  
PROFILE  
Horiz: 1"=100'-Vert: 1"=6'  
Cross Sections: 1"=5'



INDEX MAP



TYPICAL CROSS SECTION  
Scale: 1"=5'



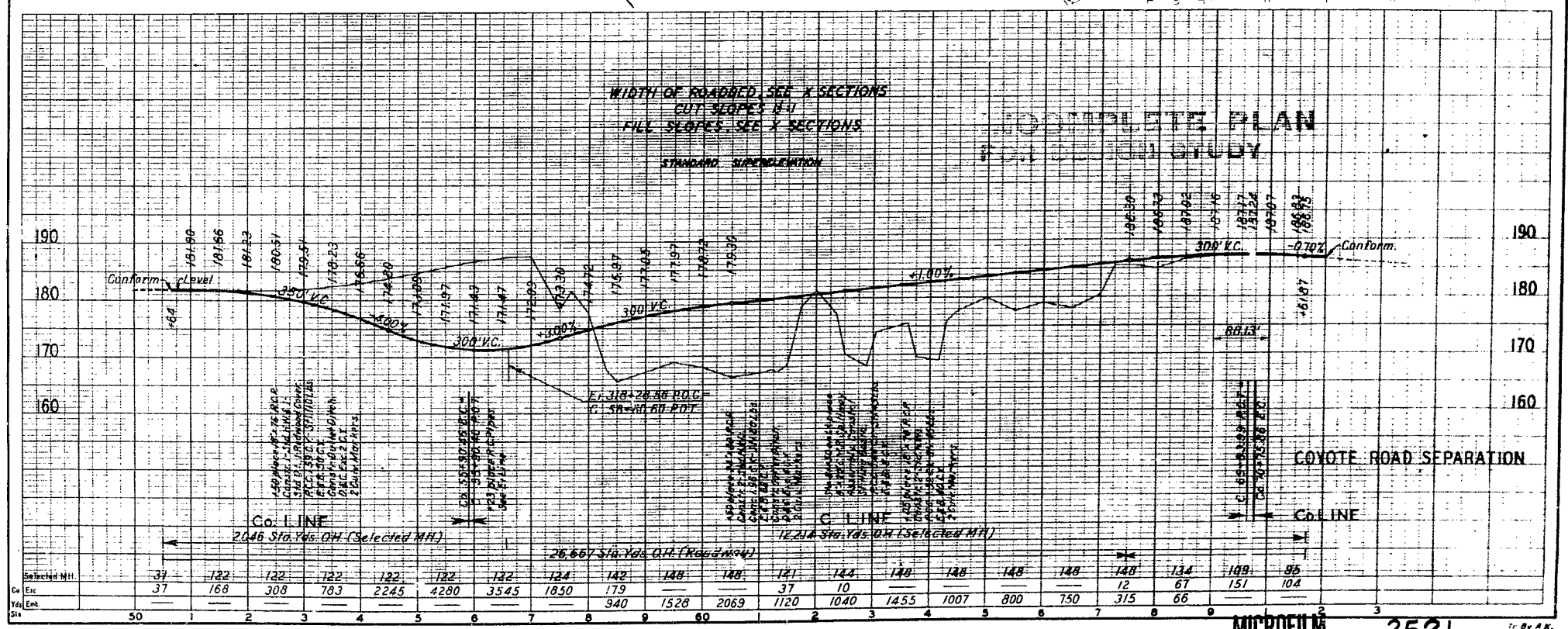
PER MAP DIST. IN. STATE PER AC. PRO. IN. FINAL. YEAR. SHEET NO. TOTAL SHEETS

2 CAL 2 E 31

*John H. Swickard*  
Dist. Eng. Dist. IV

Approved

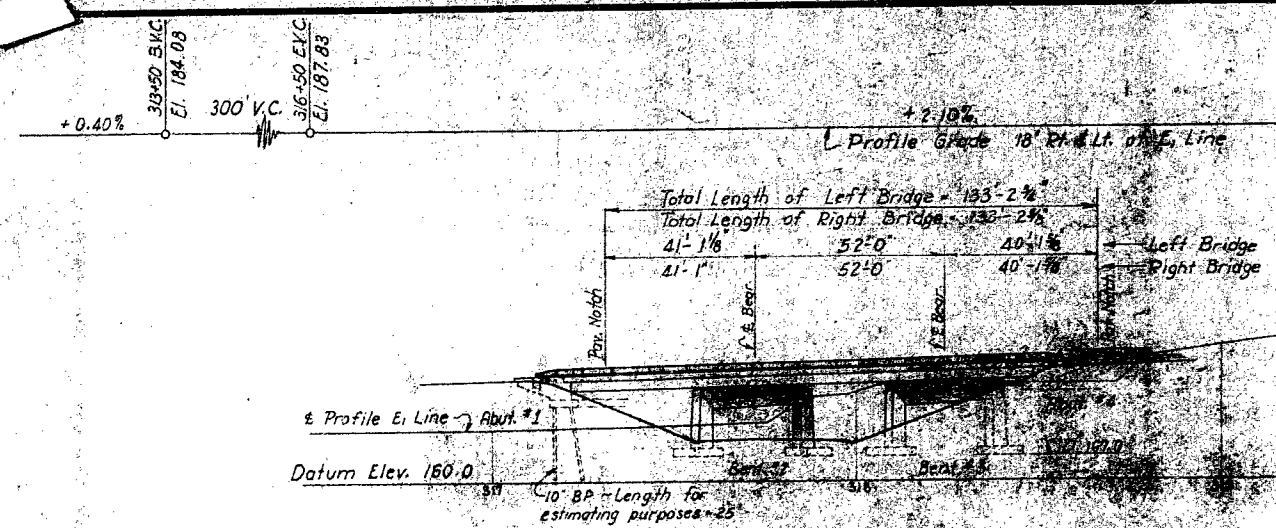
Engineer, Surveys and Plans.  
Civil Engineer License No. 10



NO.	DATE	BY	CHKD.	APP'D.	REMARKS
1	5-21-63	J.E.			

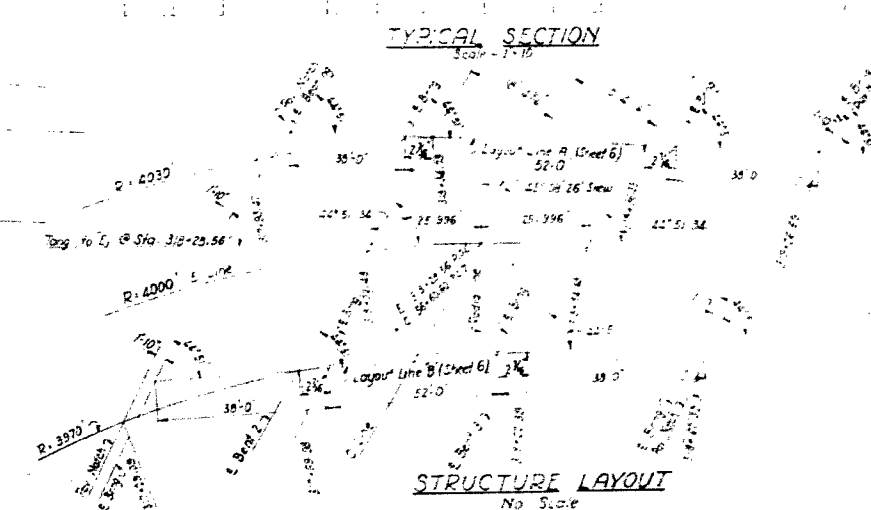
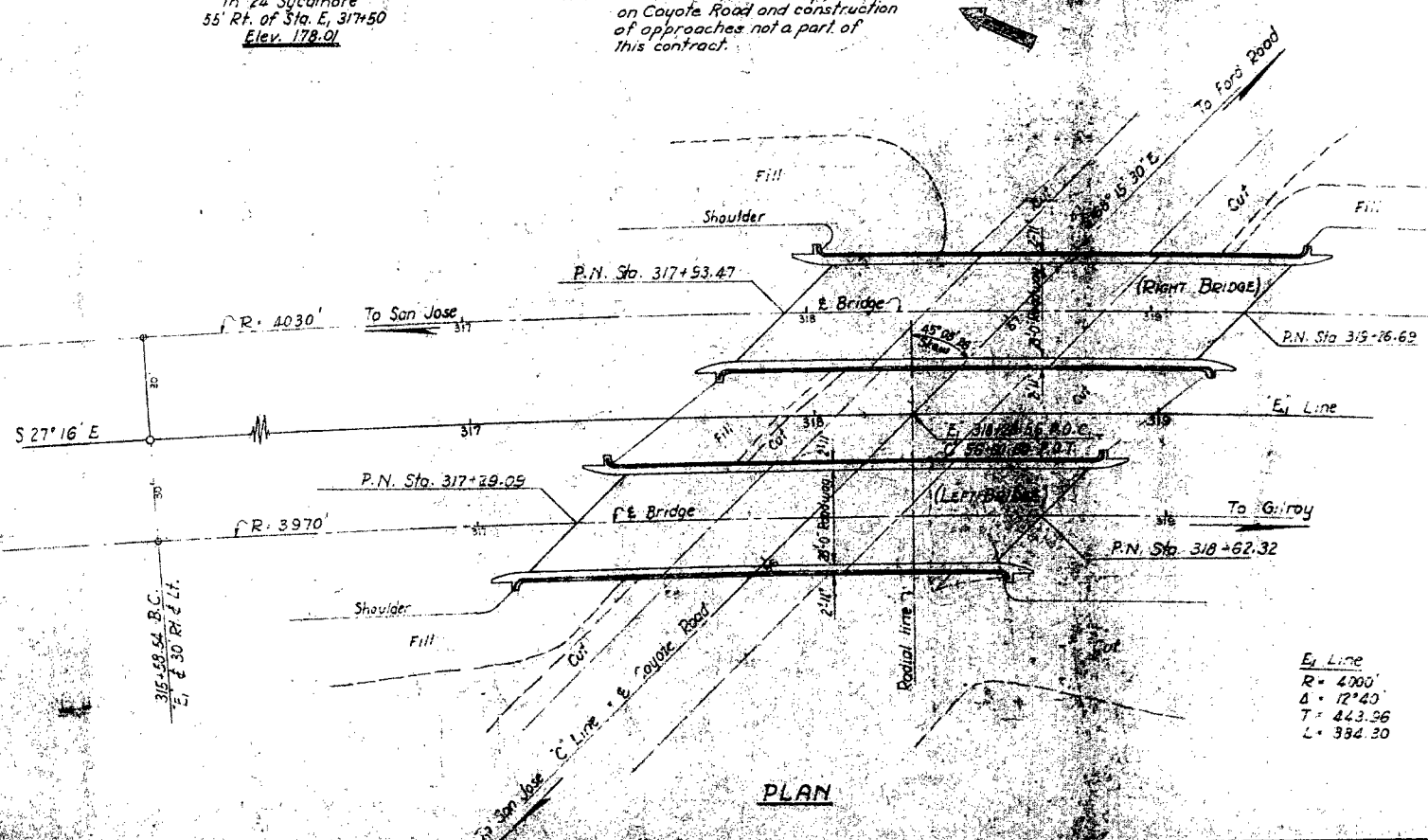
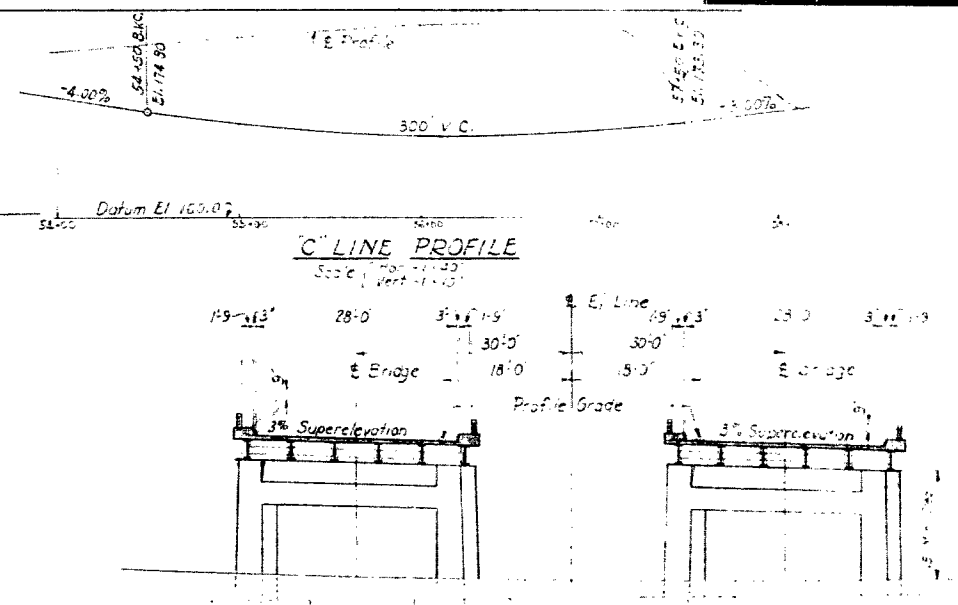
NO.	DATE	BY	CHKD.	APP'D.	REMARKS
2	5-21-63	J.E.			

# UNAPPROVED PLANS



- BM #38 -  
Bridge Spike & Washer  
in 24 Sycamore  
55' Rt. of Sta. E, 317+50  
Elev. 178.01

Note: Excavation of roadway prism  
on Coyote Road and construction  
of approaches not a part of  
this contract.



**INDEX TO PLANS**

SHEET NO.	TITLE
1	General Plan
2	Foundation Plan
3	Abutment No. 1 Details
4	Abutment No. 2 Details
5	Spill Details
6	Steel Layout & Details
7	Deck Details
8	Railing Details

3521

STATE OF CALIFORNIA  
DEPARTMENT OF PUBLIC WORKS  
DIVISION OF HIGHWAYS

**COYOTE ROAD UNDERCROSSING**  
ABOUT 6 MILES SOUTH OF SAN JOSE  
IN SANTA CLARA COUNTY

**GENERAL PLAN**

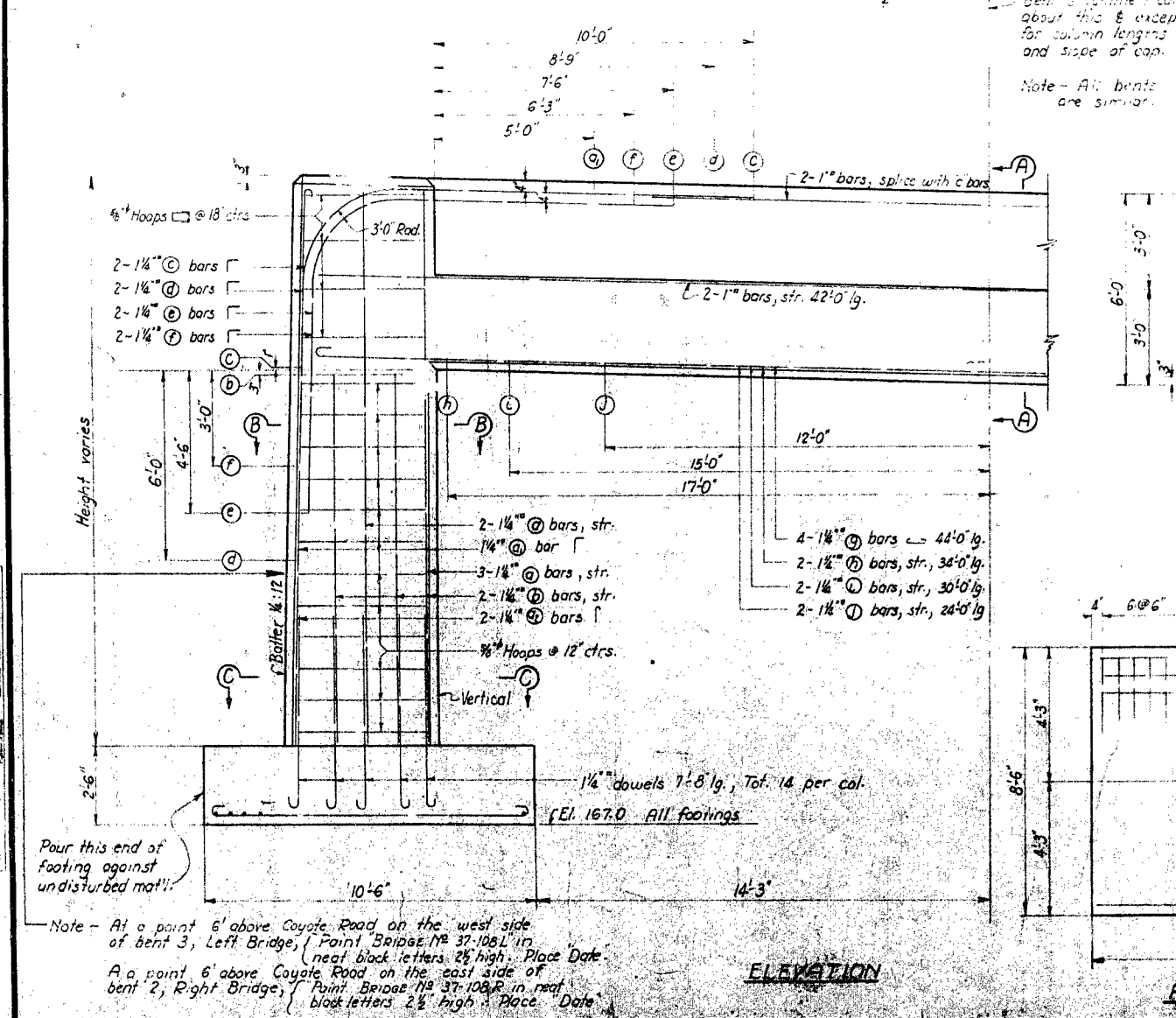
SCALE 1" = 20' or as shown

FILE NO. 37-100 R&L

DRAWING NO. C-650-1

BRIDGE DEPARTMENT

DESIGNED BY	J.E.
CHECKED BY	J.E.
APPROVED BY	J.E.
DATE	5-21-63



BEST LOCATION DATA			
PLANT No.	TIME OF DAY	DATE	TIME
1	17:00-18:00	10-11-60	10:00-11:00
2	18:00-19:00	10-11-60	11:00-12:00

