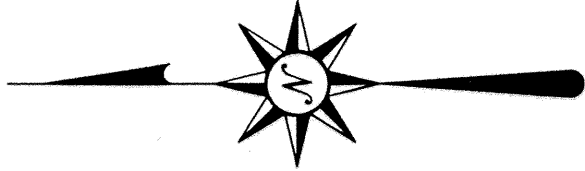


REFERENCES:

1. M.C.2, DR.23, PG.93, M.C.R.
2. INST. No. 2002-14807, M.C.R.
3. INST. No. 2002-14806, M.C.R.

COUNTY SURVEYOR'S NOTE:

THIS MAP IS APPROVED FOR FILING IN ACCORDANCE WITH CALIFORNIA GOV'T CODE SECTION 66412 (d) AND COUNTY CODE SECTION 17-17(B)(5), PURSUANT TO COUNTY APPROVED BOUNDARY LINE ADJUSTMENT No. B5-2001

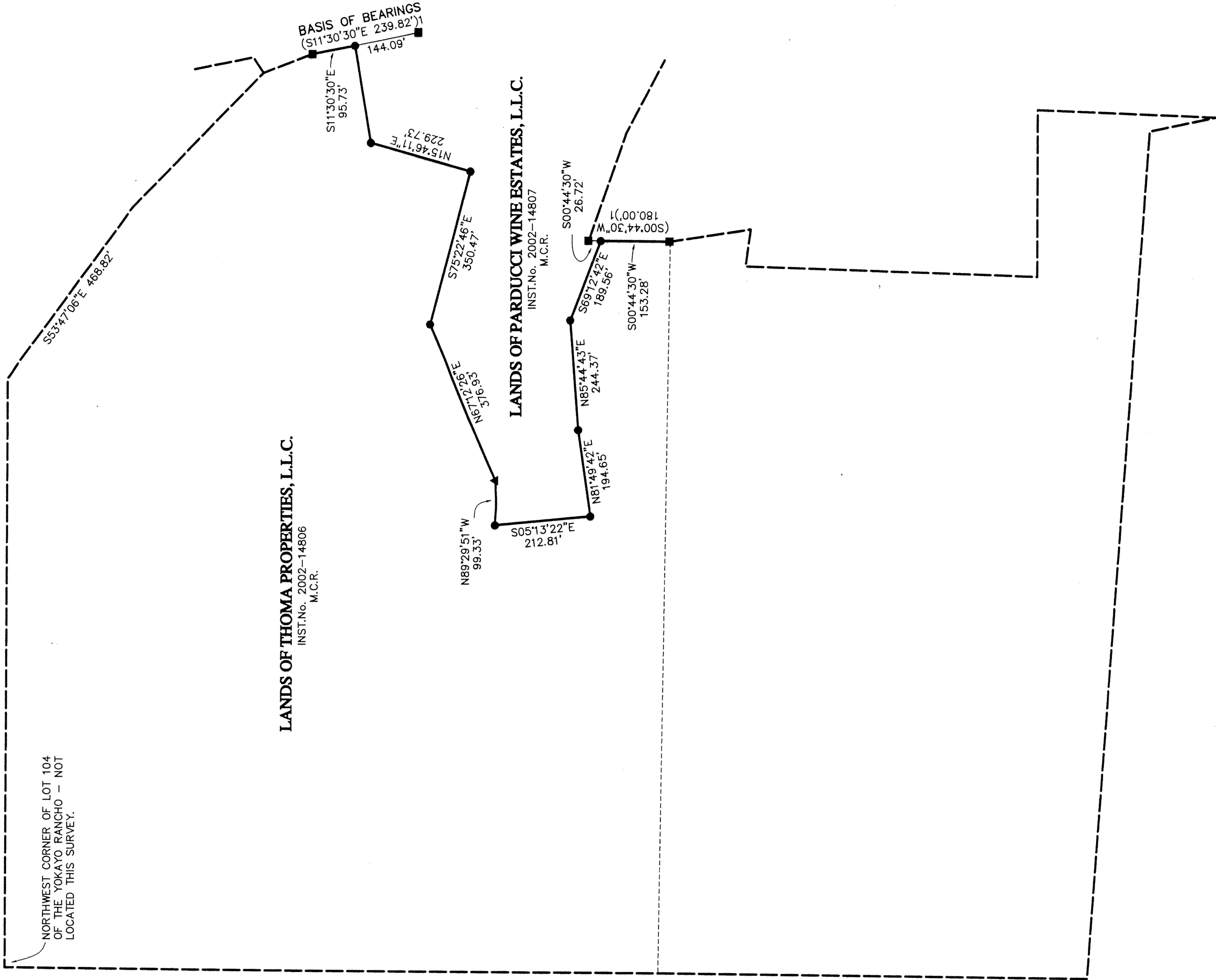


NOTES:

1. MEASUREMENTS SHOWN MATCH ADJOINING RECORD UNLESS SHOWN OTHERWISE.
2. ALL DISTANCES ARE EXPRESSED AS FEET AND DECIMALS THEREOF.
3. THIS IS A BOUNDARY SURVEY ONLY. NO EASEMENTS OR RIGHTS OF WAY ARE NECESSARILY SHOWN.

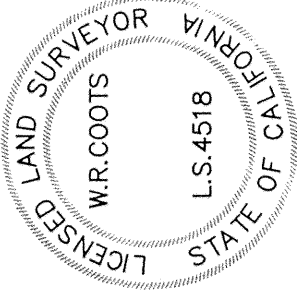
LEGEND

- SET 5/8" REBAR TAGGED L.S.4518 - (3/4")2,3
  - FOUND 1/2" IRON PIPE TAGGED L.S. 3089 PER REF. 1.
  - ▲ 2" DIAMETER GALVANIZED FENCE ANGLE POST
  - ( ) RECORD DATA PER REFERENCE
  - O.R. OFFICIAL RECORDS
- APPROXIMATE PROPERTY LINE - NOT LOCATED THIS SURVEY



SURVEYOR'S STATEMENT

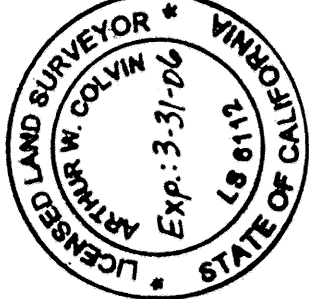
THIS MAP CORRECTLY REPRESENTS A SURVEY MADE BY ME OR UNDER MY DIRECTION IN CONFORMANCE WITH THE REQUIREMENTS OF THE PROFESSIONAL LAND SURVEYORS' ACT AT THE REQUEST OF BOB SWAIN IN MAY 2002.



W.R. COOTS - R.L.S. 4518 (EXP. DATE = 9/30/06)

COUNTY SURVEYOR'S STATEMENT

THIS MAP HAS BEEN EXAMINED IN ACCORDANCE WITH SECTION 8766 OF THE PROFESSIONAL LAND SURVEYORS' ACT THIS 13<sup>TH</sup> DAY OF AUGUST 2003.



BY: Arthur W. Colvin  
ARTHUR W. COLVIN - L.S. 6112 EXP. DATE = 3/31/06  
COUNTY SURVEYOR  
MENDOCINO COUNTY, CALIFORNIA

RECORDER'S STATEMENT

FILED THIS 21<sup>ST</sup> DAY OF August 2003 AT 1:20 P.M. IN MAPS, DRAWER 10, PAGE 88, M.C.R. AT THE REQUEST OF W. R. COOTS.

MARSHA A. WHARFF - COUNTY RECORDER

BY: Marsha A. Wharff DEPUTY  
FEE: 8<sup>00</sup>

RECORD OF SURVEY

BEING A PORTION OF LOT 104  
OF THE YOKAYO RANCHO  
MENDOCINO COUNTY, CALIFORNIA  
SEPTEMBER 2002

BASIS OF BEARINGS

BETWEEN MONUMENTS FOUND AS SHOWN PER REFERENCE 1.



#102

SHEET 1 OF 1

MAPS  
DRAWER 10  
PAGE 88

8<sup>00</sup>

R0547-02