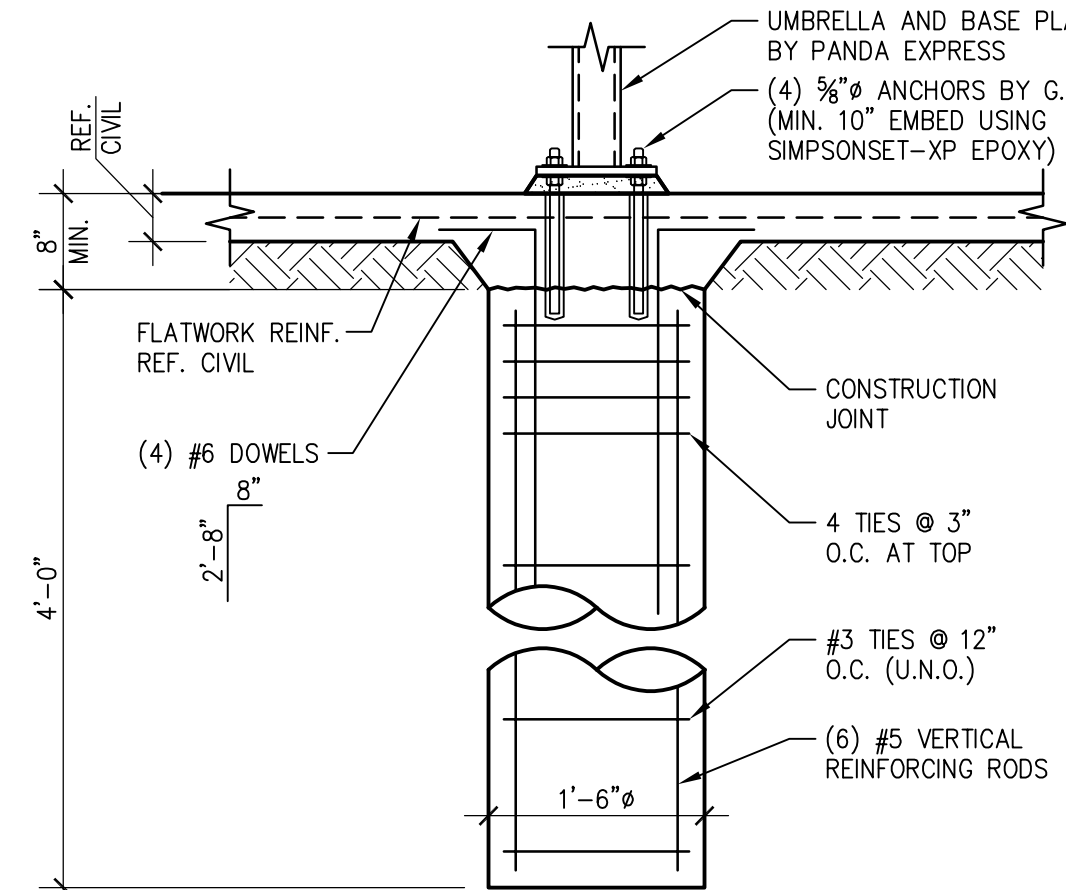


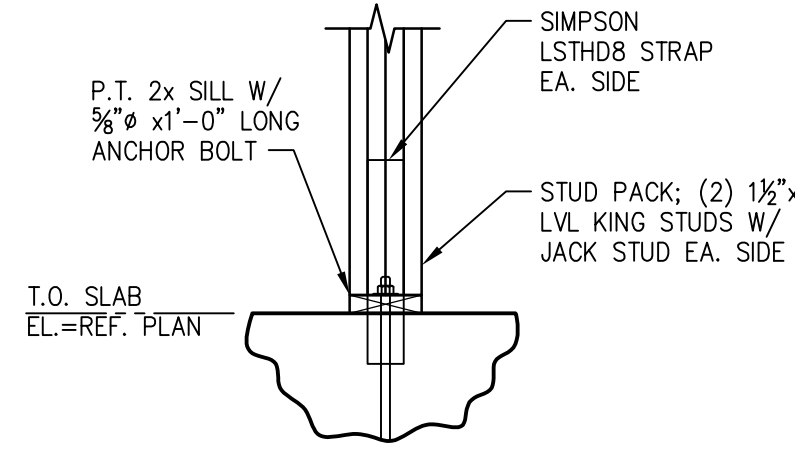
SECTION 20,20A

SCALE:  $\frac{3}{4}"=1'-0"$  **S-200**

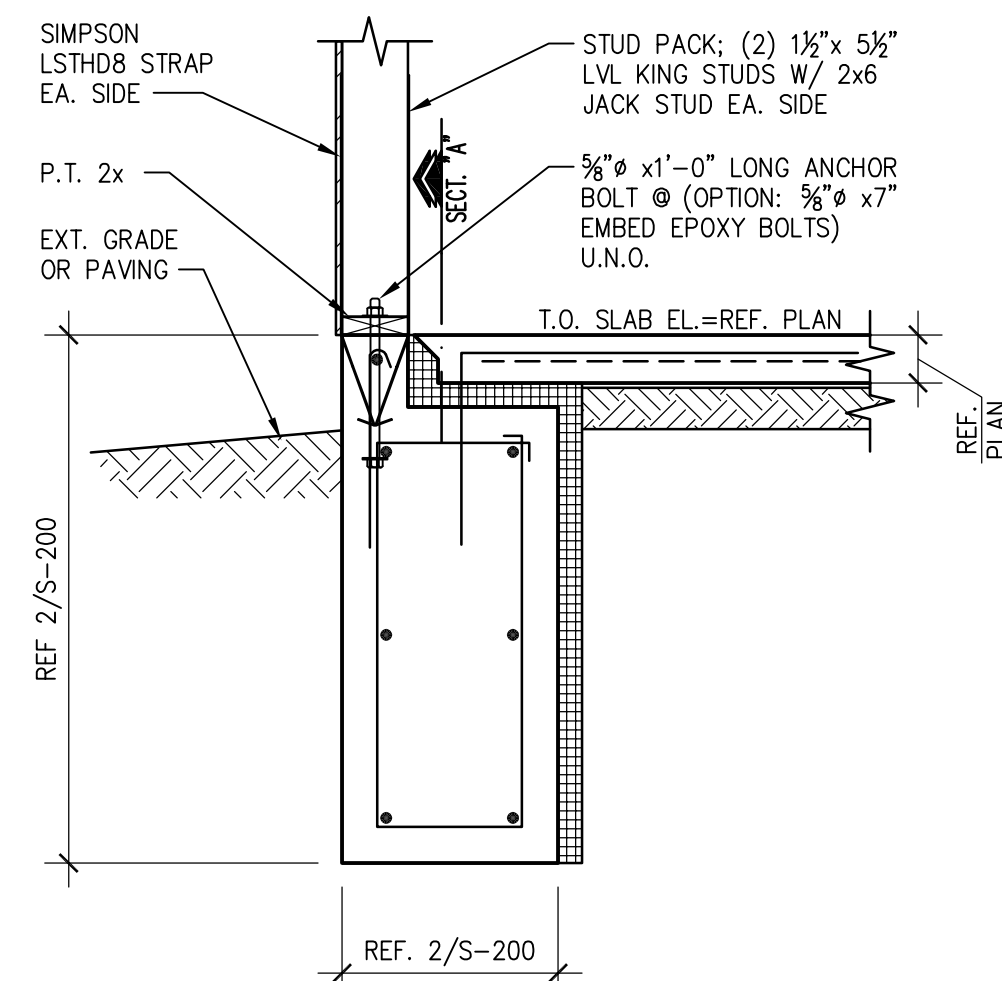


**UMBRELLA FOUNDATION**

SCALE:  $\frac{3}{4}"=1'-0"$  **S-200**

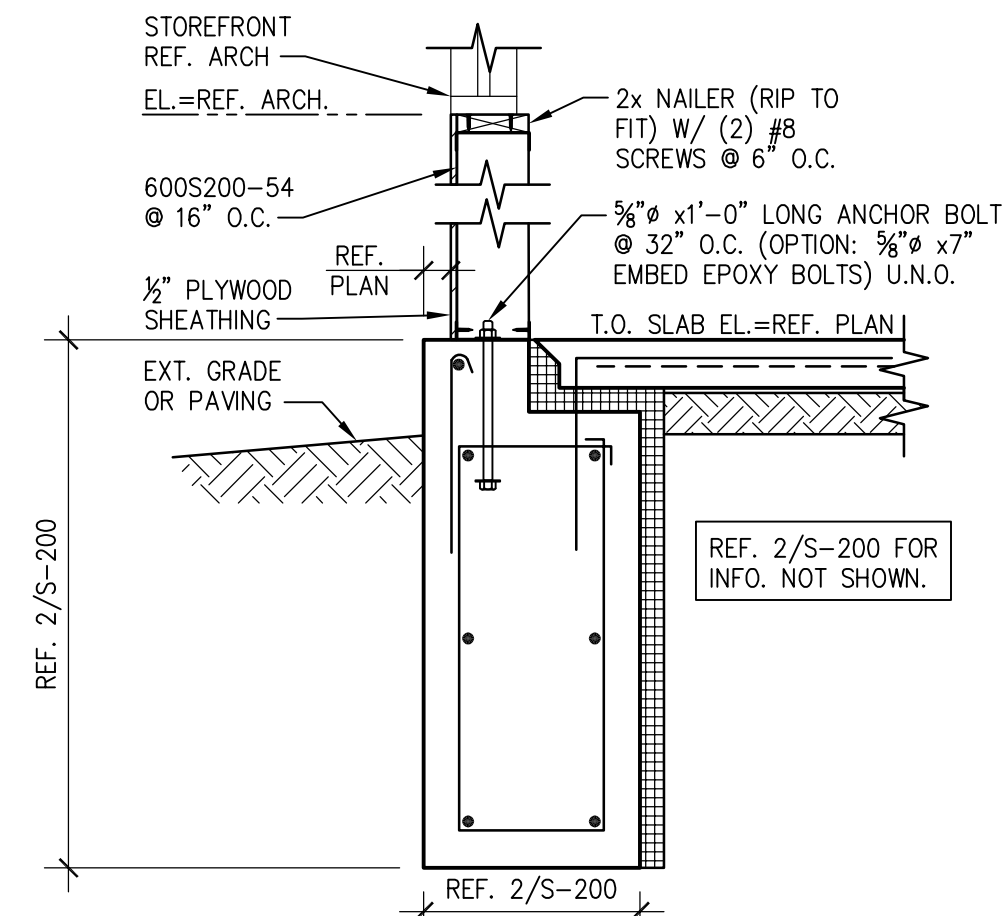


SECT. "A"



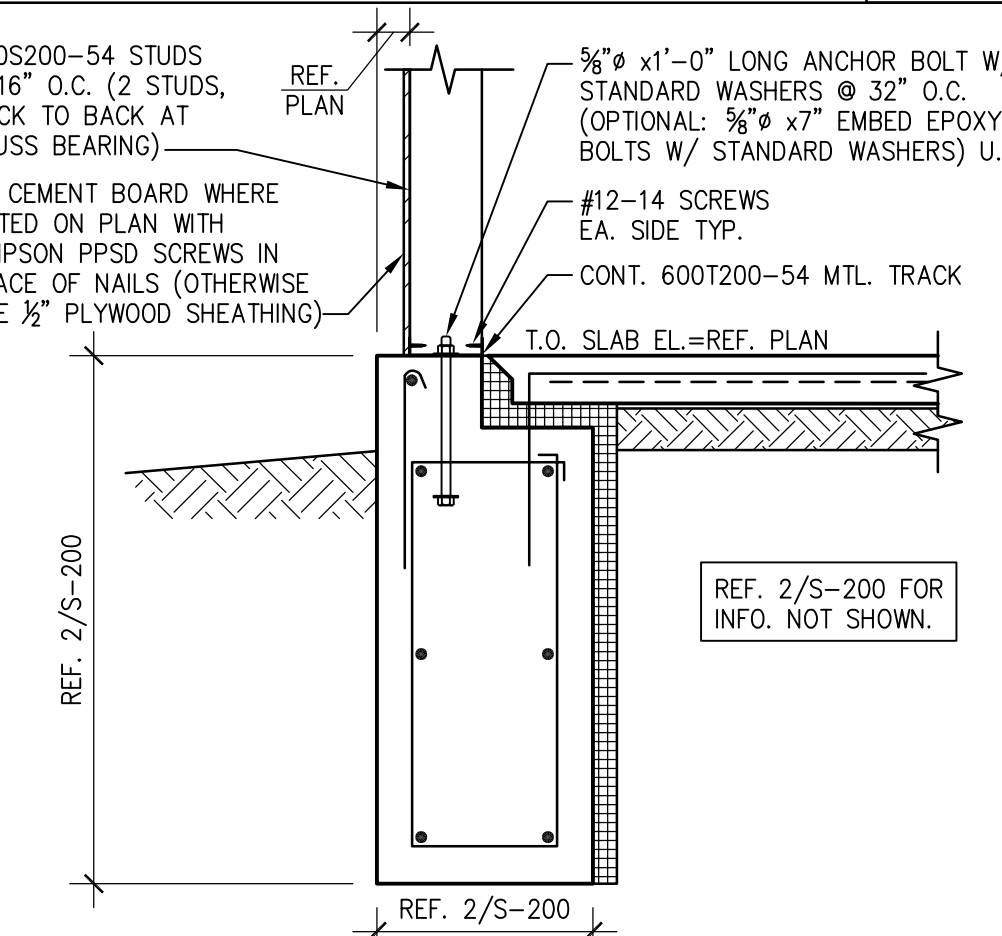
SECTION | 7

SCALE:  $\frac{3}{4}"=1'-0"$  **S-200**



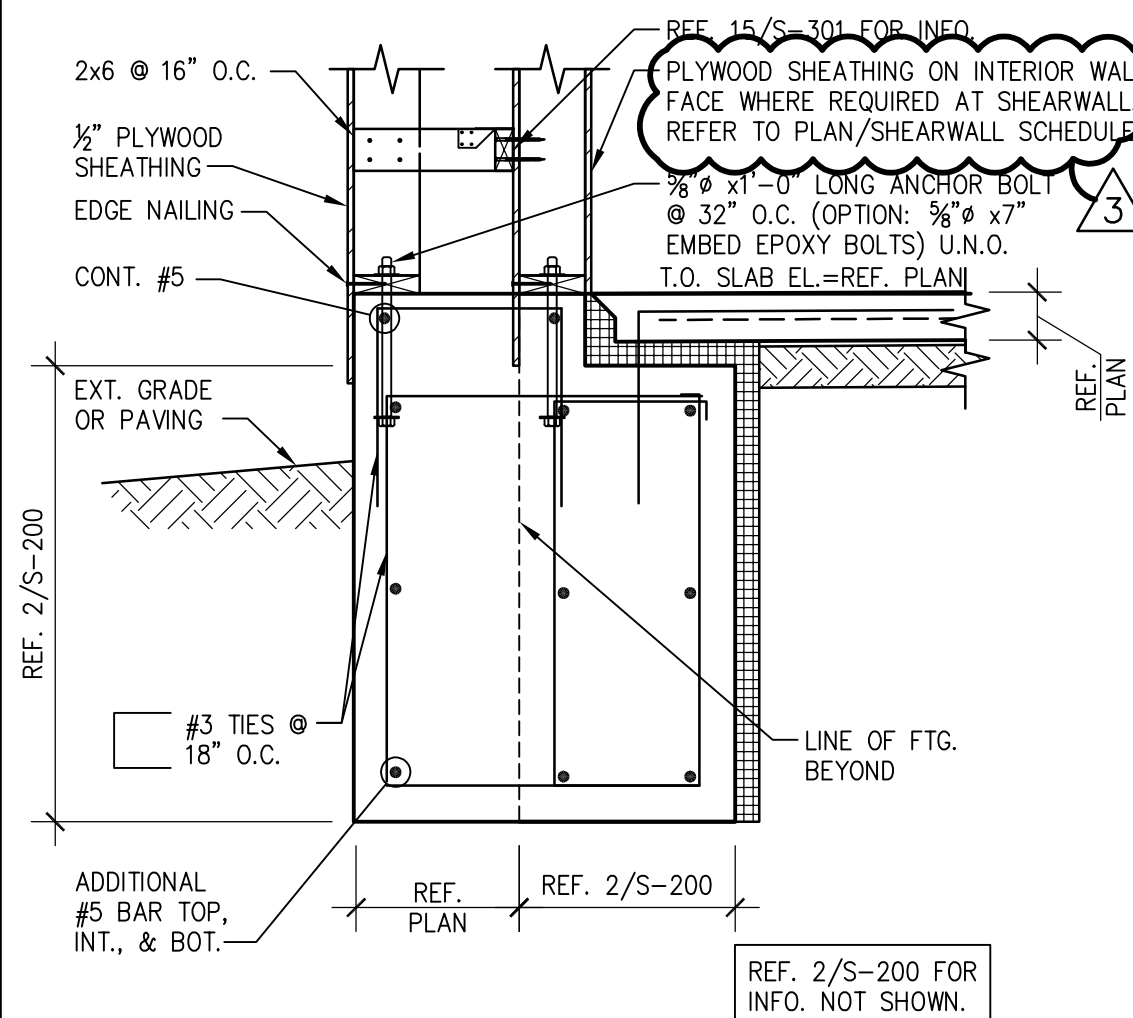
<b>SECTION</b>	<b>6</b>
----------------	----------

SCALE:  $\frac{3}{4}"=1'-0"$  **S-200**



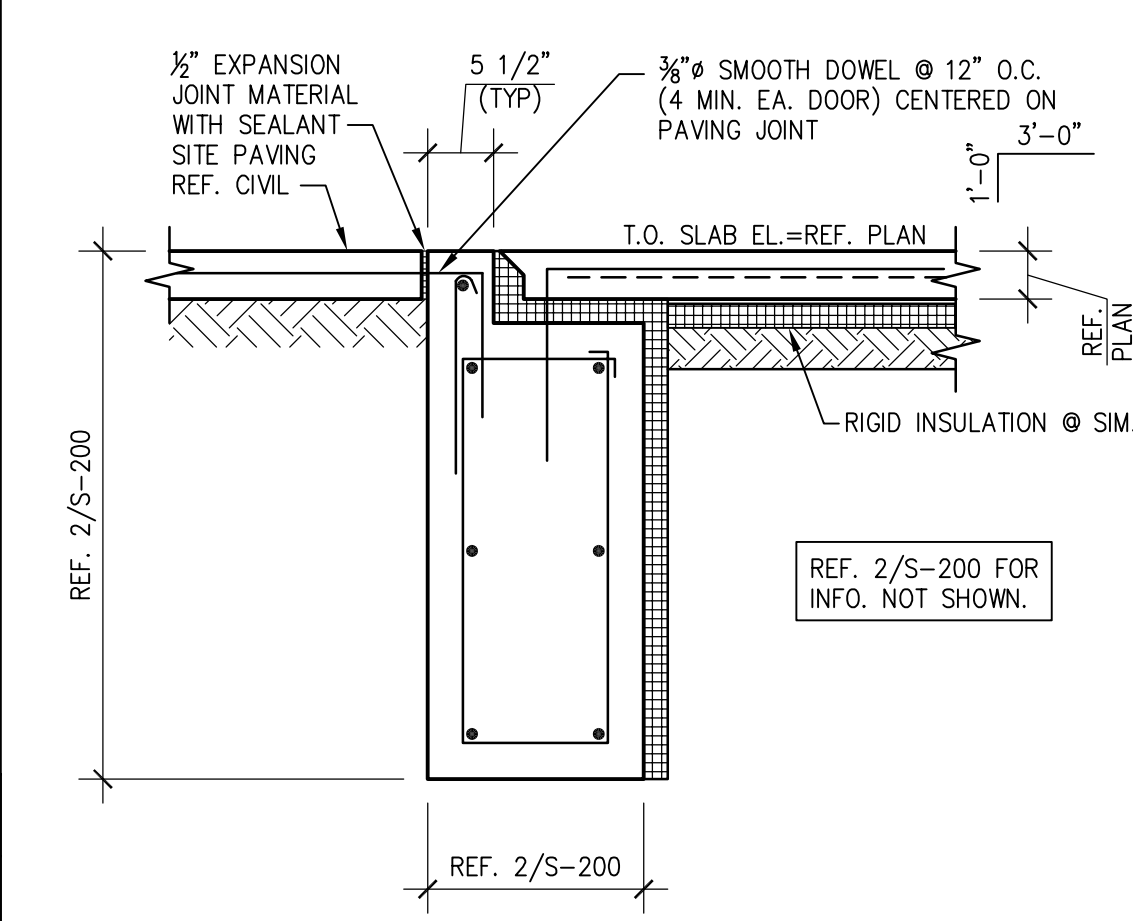
<b>SECTION</b>	<b>5</b>
----------------	----------

SCALE:  $\frac{3}{4}"=1'-0"$  **S-200**



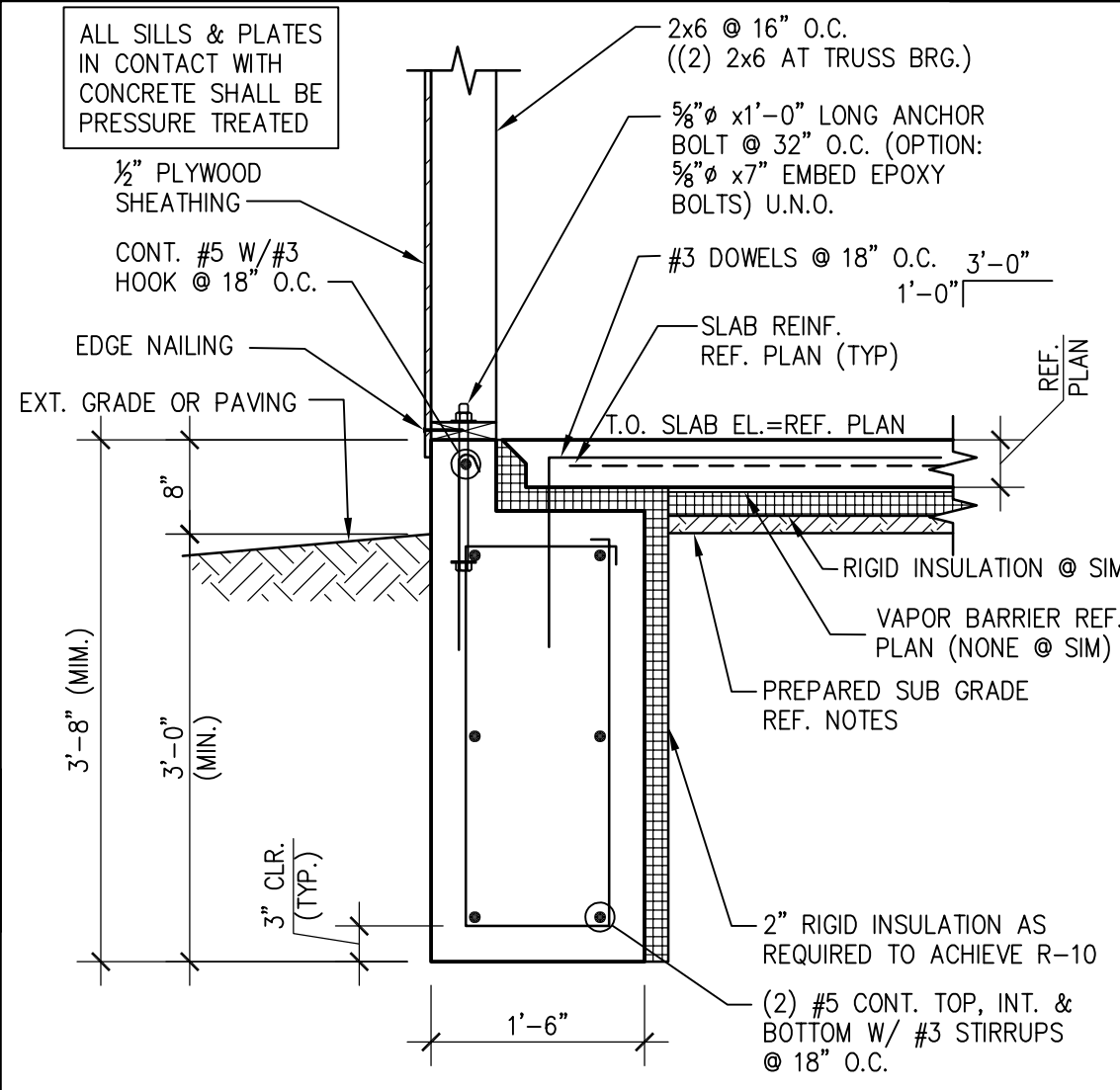
SECTION 4

SCALE:  $\frac{3}{4}"=1'-0"$  **S-200**



SECTION 3

SCALE:  $\frac{3}{4}"=1'-0"$  **S-200**



SECTION 2

SCALE:  $\frac{3}{4}"=1'-0"$  **S-200**

THIS DOCUMENT IS RELEASED  
FOR THE PURPOSE OF COORD.,  
UNDER THE AUTHORITY OF  
RONALD A. ROBERTS, P.E.  
0402023614, ON FEBRUARY 2.  
2022 IT IS NOT TO BE USED FOR  
PERMIT, BID OR CONSTRUCTION.



**PANDA EXPRESS, INC.**  
1683 Walnut Grove Ave.  
Rosemead, California  
91770  
Telephone: 626.799.9898  
Facsimile: 626.372.8288

All ideas, designs, arrangement and plans indicated or represented by this drawing are the property of Panda Express Inc. and were created for use on this specific project. None of these ideas, designs, arrangements or plans may be used by or disclosed to any person, firm, or corporation without the written permission of Panda Express Inc.

REVISIONS:

3	OWNER REVISIONS	01-27-22
---	-----------------	----------

ISSUE DATE:

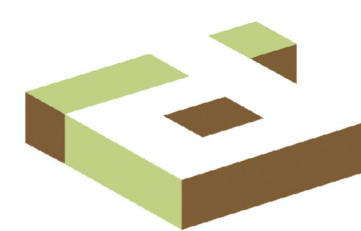
ISSUE FOR PERMIT	01-29-22
ISSUE FOR BID	04-30-22
ISSUE FOR BID (DT)	02-04-22

DRAWN BY: AE

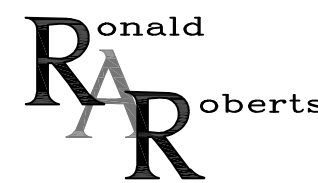
PANDA PROJECT #: D8164

PANDA STORE #:

ARCH PROJECT #: 261-321



idGROUP



Associates, Inc  
Consulting Engineers

2948 N. Stemmons Freeway  
Dallas, Texas 75247-6103  
Phone: (214) 637-6299  
[www.rara.net](http://www.rara.net)

# PANDA EXPRESS

TRUE WARM & WELCOME  
JEFFERSON AVE. & MORRIS DR  
NEWPORT NEWS, VA 23605

# S-200

## FOUNDATION DETAILS

TRUE WARM &amp; WELCOME 2300 R4