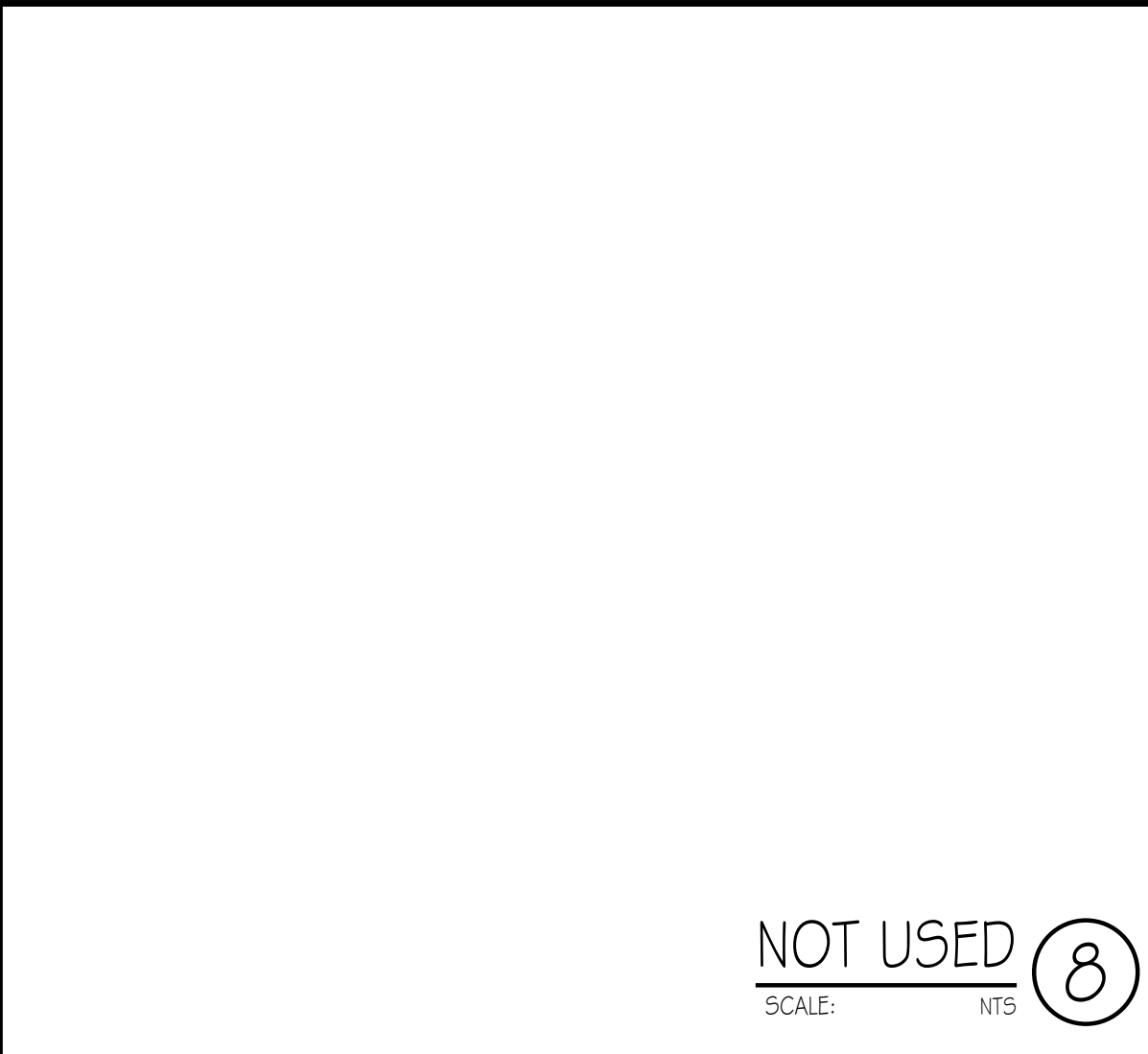
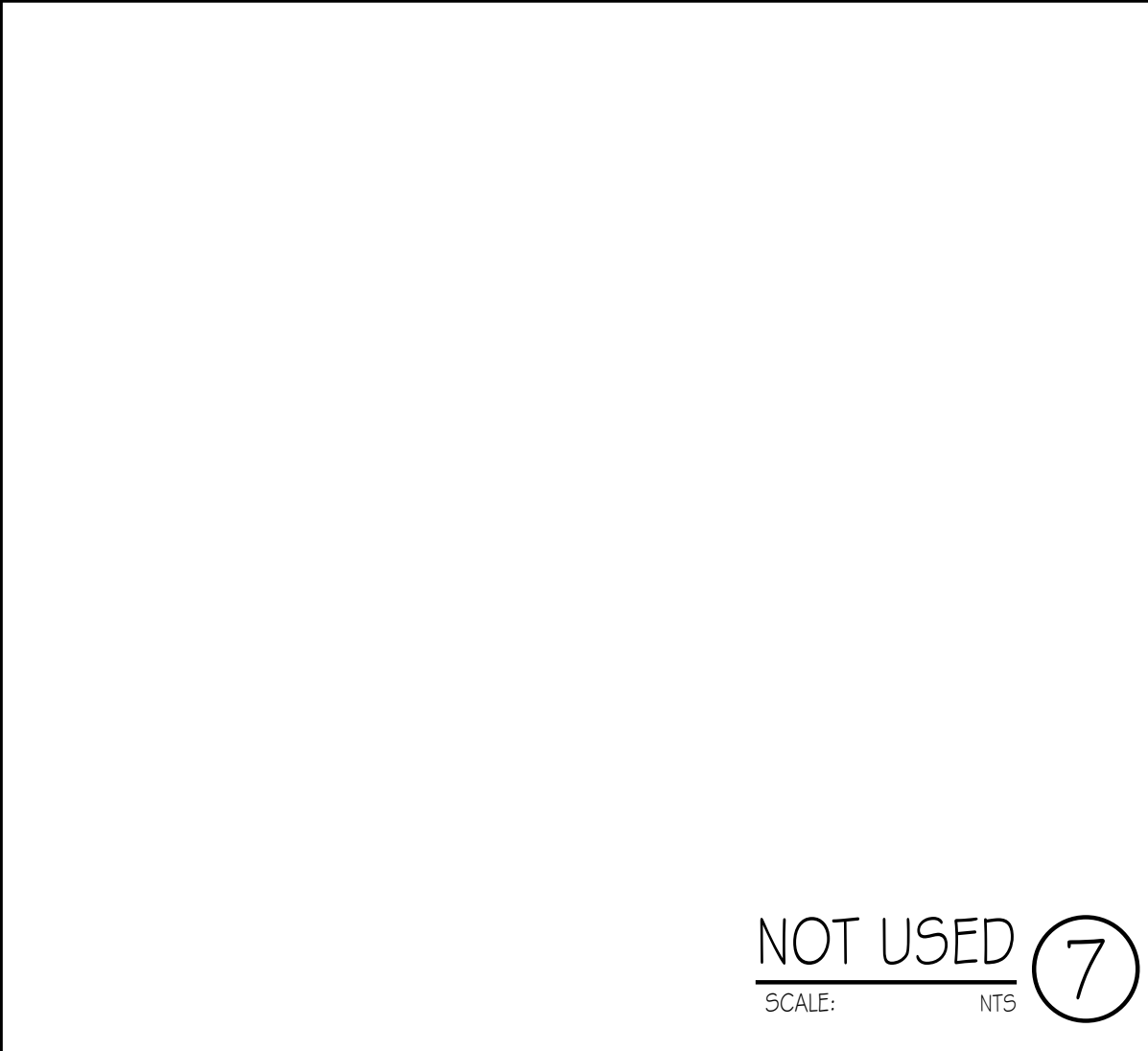


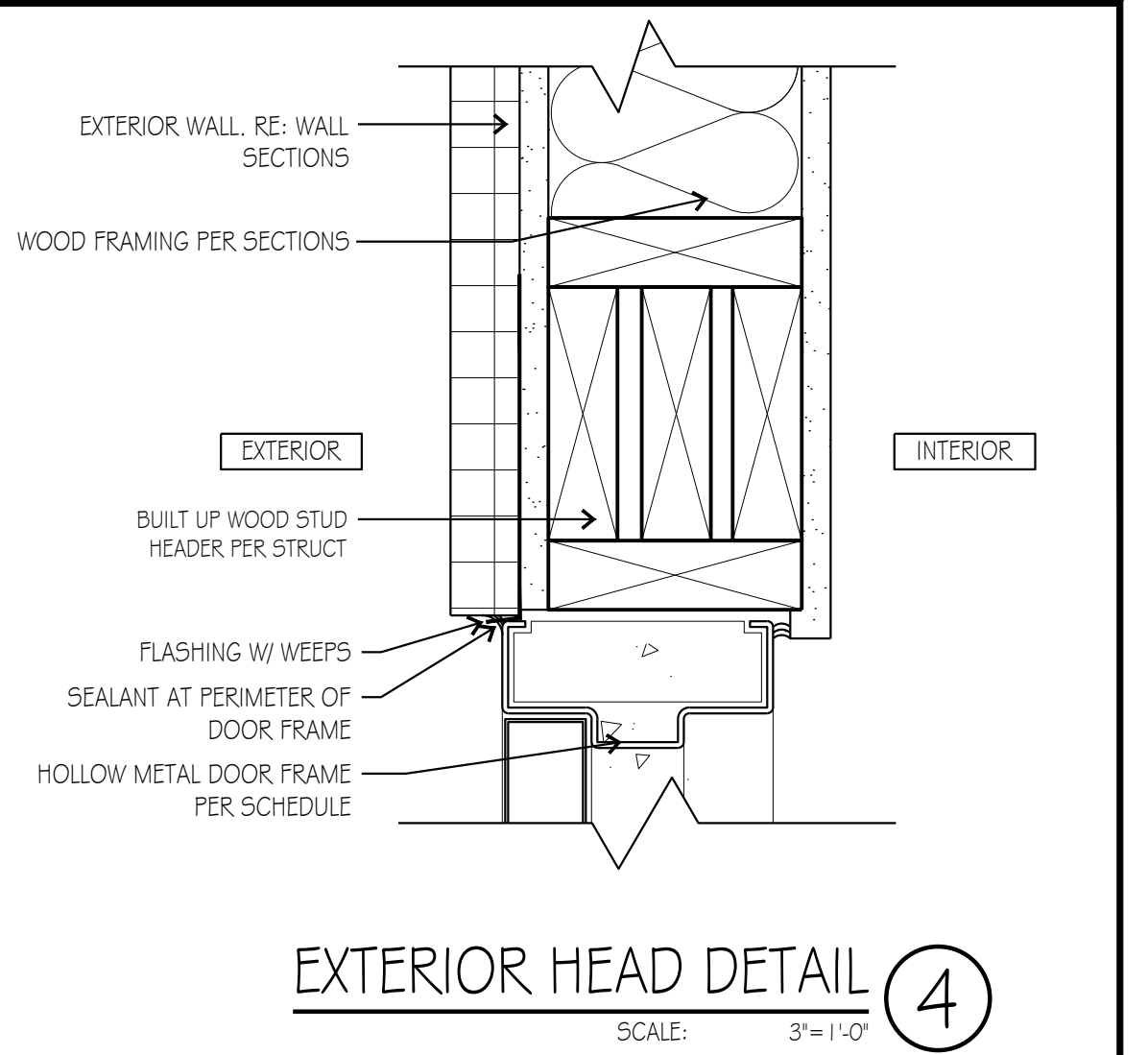
WINDOW SCHEDULE 11  
SCALE: 1/4" = 1'-0"



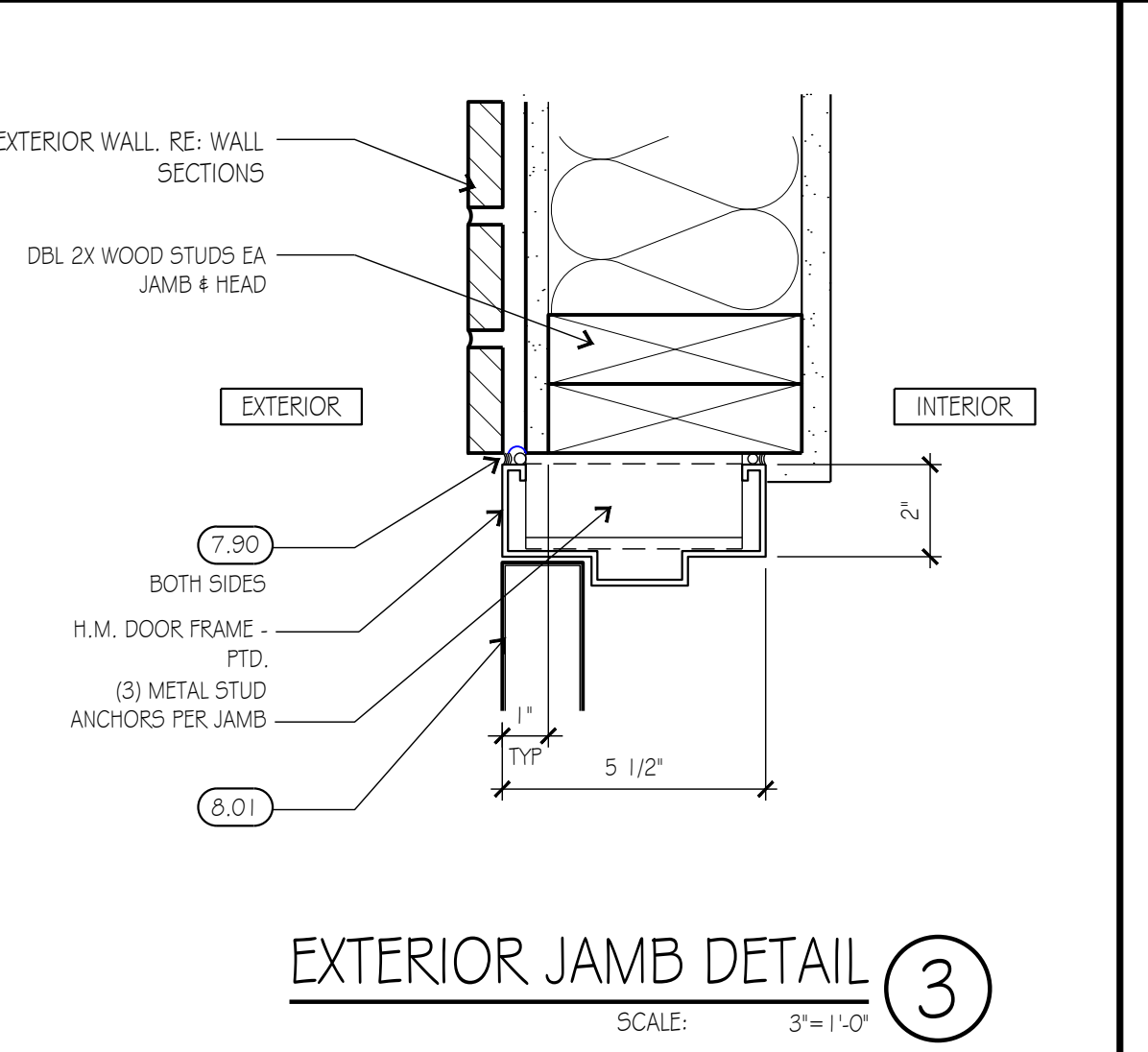
NOT USED 8  
SCALE: NTS



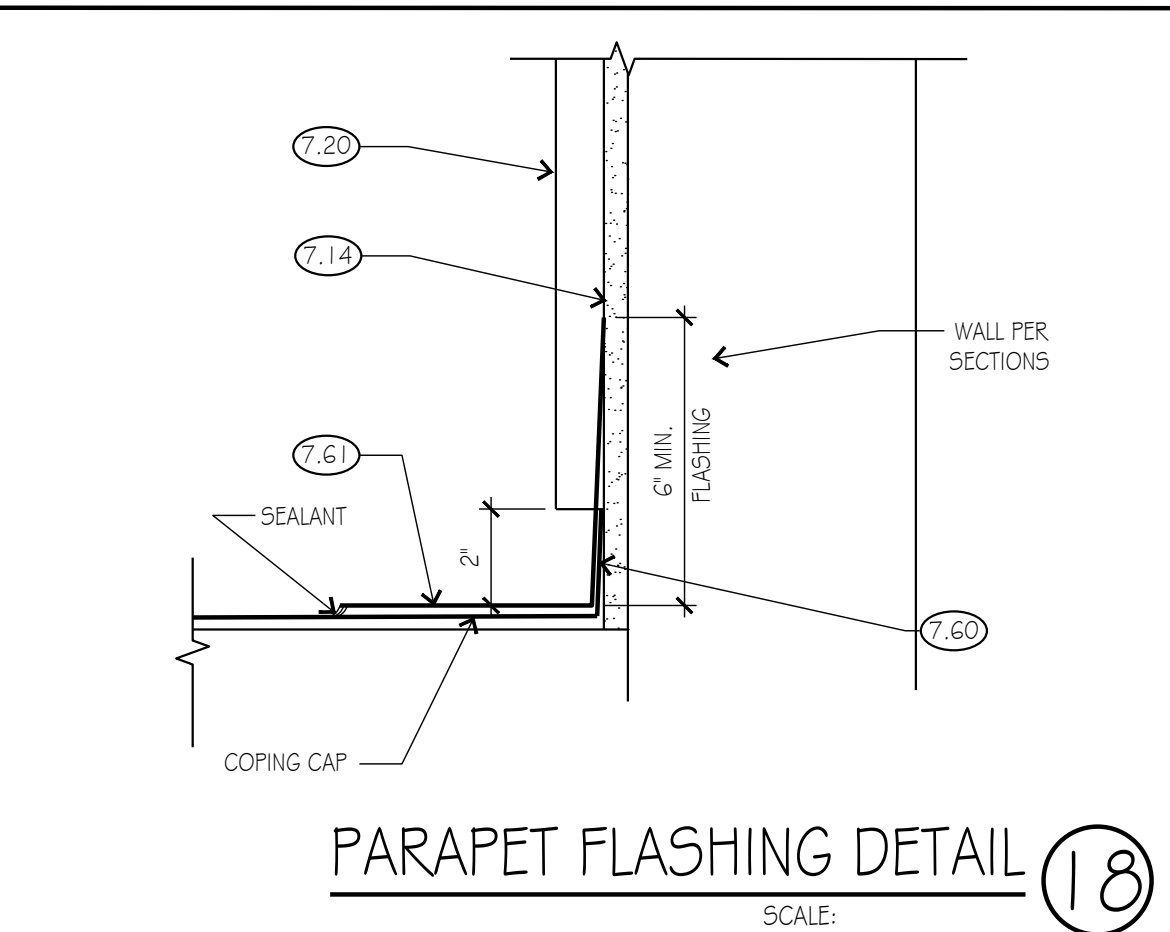
NOT USED 7  
SCALE: NTS



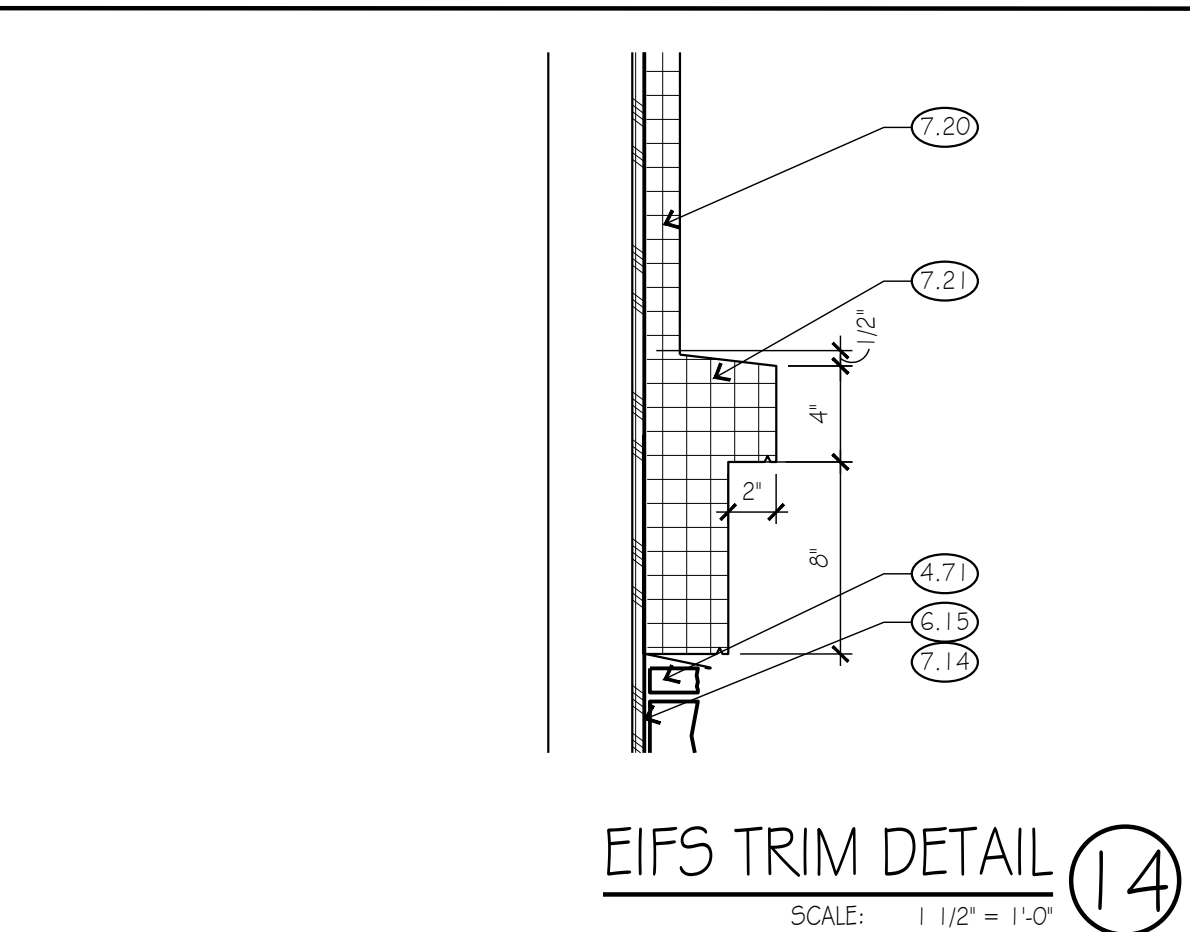
EXTERIOR HEAD DETAIL 4  
SCALE: 3" = 1'-0"



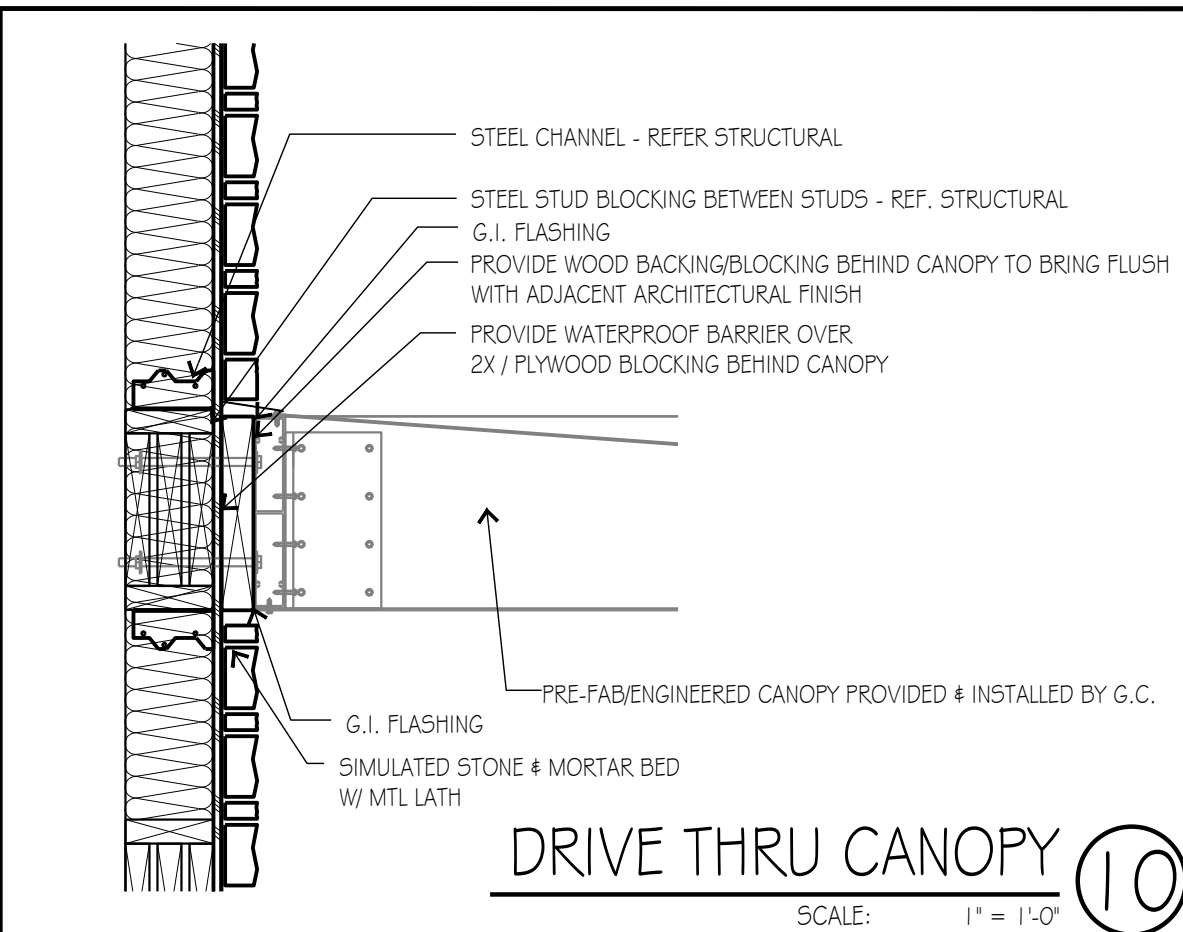
EXTERIOR JAMB DETAIL 3  
SCALE: 3" = 1'-0"



PARAPET FLASHING DETAIL 18  
SCALE:



EIFS TRIM DETAIL 14  
SCALE: 1 1/2\"/>

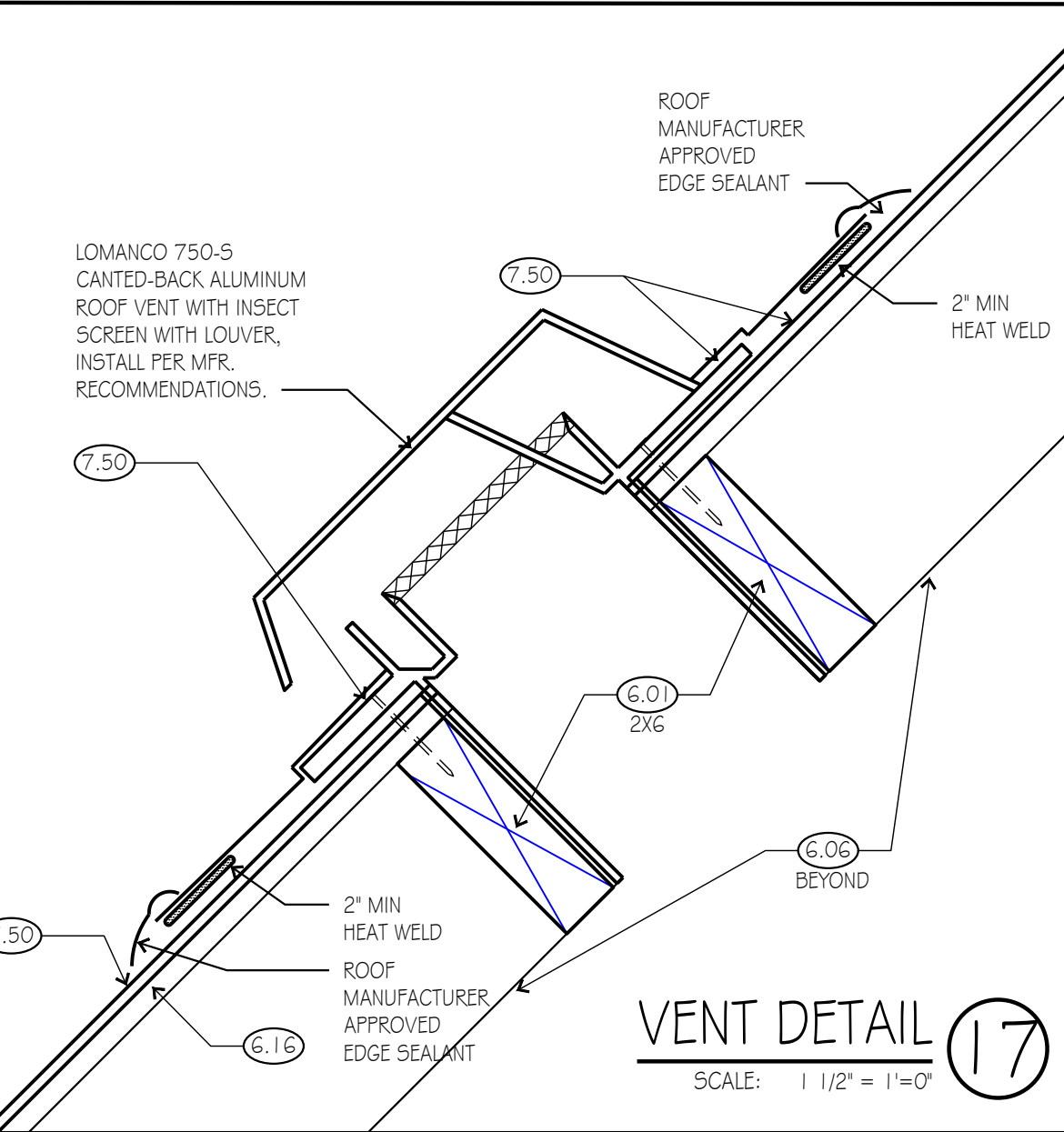


DRIVE THRU CANOPY 10  
SCALE: 1\"/>

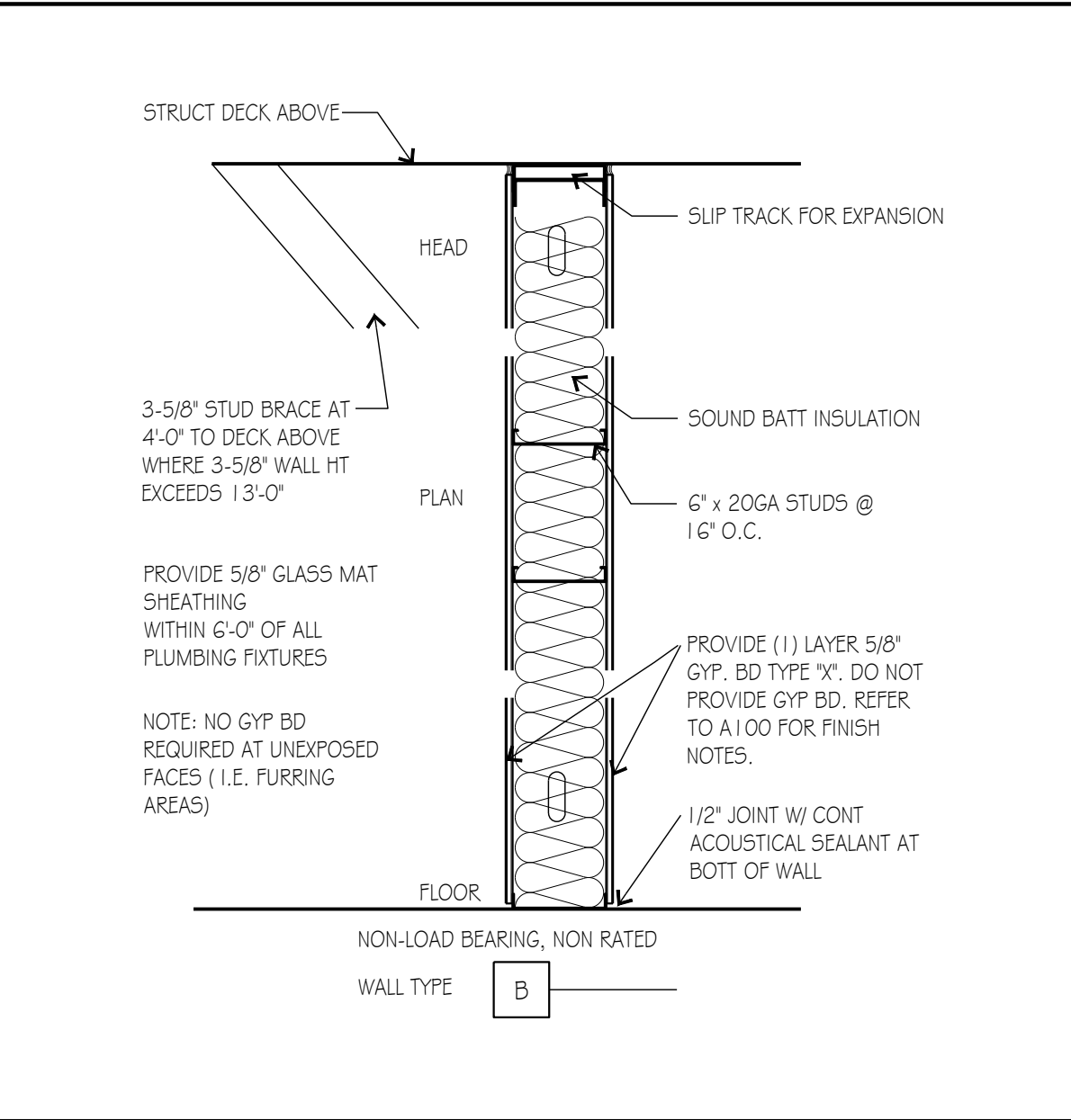
| DOOR NO. | DOOR  |        |        |      |          |        | FRAME    |        |      |      | RATING | HARDWARE | REMARKS       |
|----------|-------|--------|--------|------|----------|--------|----------|--------|------|------|--------|----------|---------------|
|          | WIDTH | HEIGHT | THICK  | TYPE | MATERIAL | FINISH | MATERIAL | FINISH | HEAD | JAMB |        |          |               |
| 100      | 3'-0" | 7'-0"  | 1 3/4" | B    | HM       | PAINT  | HM       | PAINT  | -    | -    | -      | 3        | NOTE: 2, 3, 4 |
| 101A     | 3'-0" | 7'-0"  | 1 3/4" | A    | AL       | ANOD   | AL       | ANOD   | -    | -    | -      | 1        | NOTE: 2, 3, 4 |
| 101B     | 3'-0" | 7'-0"  | 1 3/4" | A    | AL       | ANOD   | AL       | ANOD   | -    | -    | -      | 1        | NOTE: 2, 3, 4 |
| 101C     | 3'-0" | 7'-0"  | 1 3/4" | A    | AL       | ANOD   | AL       | ANOD   | -    | -    | -      | 1        | NOTE: 2, 3, 4 |
| 101D     | 3'-6" | 7'-0"  | 1 3/4" | A    | AL       | ANOD   | AL       | ANOD   | -    | -    | -      | 2        | NOTE: 2, 3, 4 |
| 102A     | 3'-0" | 7'-0"  | 1 3/4" | A    | AL       | ANOD   | AL       | ANOD   |      |      |        | 1        | NOTE: 3, 6    |
| 102B     | 3'-0" | 7'-0"  | 1 3/4" | A    | AL       | ANOD   | AL       | ANOD   |      |      |        | 2        | NOTE: 3, 6    |
| 103A     | 3'-0" | 7'-0"  | 1 3/4" | A    | AL       | ANOD   | AL       | ANOD   |      |      |        | 1        | NOTE: 3, 6    |
| 103B     | 3'-0" | 7'-0"  | 1 3/4" | A    | AL       | ANOD   | AL       | ANOD   |      |      |        | 2        | NOTE: 3, 6    |
| 104A     | 3'-0" | 7'-0"  | 1 3/4" | A    | AL       | ANOD   | AL       | ANOD   |      |      |        | 1        | NOTE: 3, 6    |
| 104B     | 3'-0" | 7'-0"  | 1 3/4" | A    | AL       | ANOD   | AL       | ANOD   |      |      |        | 1        | NOTE: 3, 6    |
| 104C     | 3'-0" | 7'-0"  | 1 3/4" | A    | AL       | ANOD   | AL       | ANOD   |      |      |        | 2        |               |

NOTE: FIELD VERIFY ALL ROUGH OPENING DIMENSIONS PRIOR TO FINAL FABRICATION

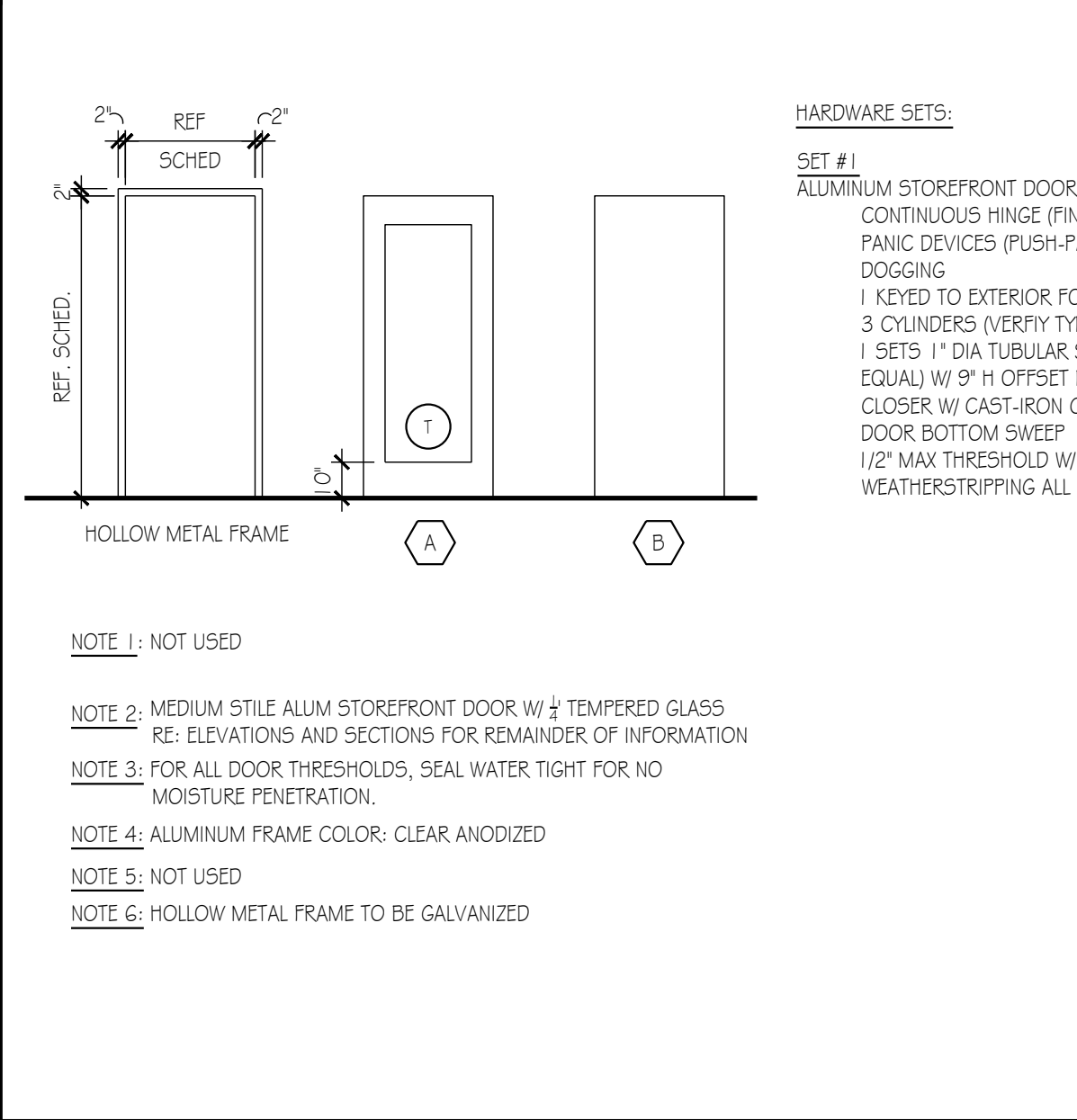
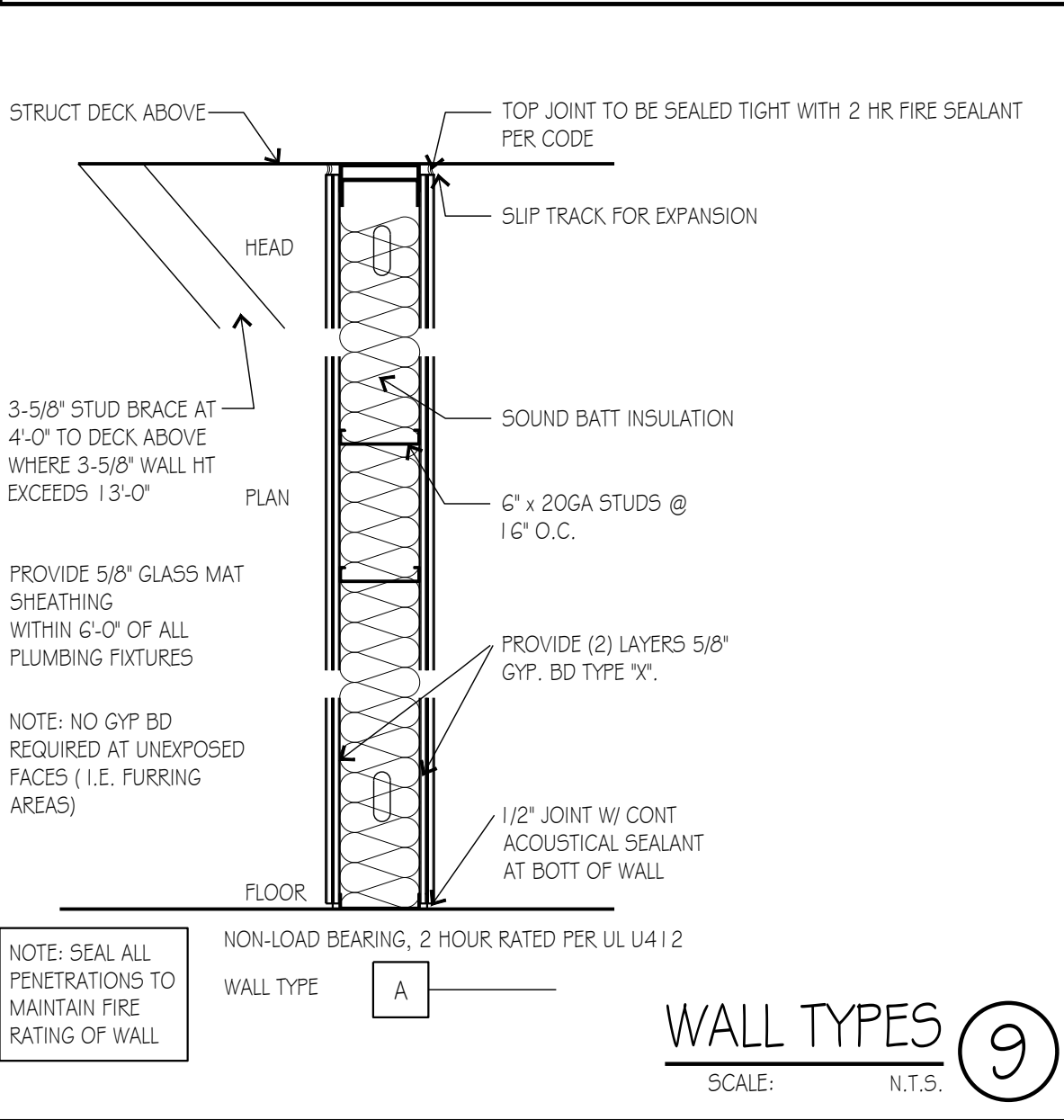
ABBREVIATED MANUFACTURERS:  
OR CAL-ROYAL PRODUCTS INC  
GJ GLYNN JOHNSON  
NGP NATIONAL GUARD PRODUCTS  
RO ROCKWOOD  
SC SCHLAGE  
SEL SELECT PRODUCTS



VENT DETAIL 17  
SCALE: 1 1/2\"/>



WALL TYPES 9  
SCALE: N.T.S.



| SET #1 | ALUMINUM STOREFRONT DOOR: | CONTINUOUS HINGE (FINISH TO MATCH DOORS)<br>PANIC DEVICES (PUSH-PAD-NOT BAR TYPE) BOTH W/ CYLINDER DOGGING<br>1 KEYED TO EXTERIOR FOR ENTRY<br>3 CYLINDERS (VERIFY TYPE - 1 @ DOOR - 2 FOR PANIC DOGGING)<br>1 SETS 1\"/>                                            |
|--------|---------------------------|----------------------------------------------------------------------------------------------------------------------------------------------------------------------------------------------------------------------------------------------------------------------|
|        |                           |                                                                                                                                                                                                                                                                      |
| SET #2 | EMERGENCY EXIT DOOR:      | NON-DRILLABLE SECURITY HINGES<br>EXIT DEVICE - \"VION DUPRAT\" # CD-399EO X G2G CYLINDER - 20-001 6-PIN MORTISE TYPE (FOR CYLINDER DOGGING)<br>OFFSET PULL - \"ROCKWOOD\" # BF 158 - 1/2\"/>                                                                         |
| SET #3 | ROOM DOOR:                | 3 EA BB HINGES<br>SIMPLEX LL1041 LOCKSET W/ CYLINDRICAL LOCK<br>COMBINATION ENTRY AND KEY OVERRIDE<br>WALL STOP<br>3 EA RSBL FRAME-BUMPERS<br>1 EA CLOSER W/ CAST-IRON CYLINDER & STOP (LCN 4040 OR EQUAL)<br>1 BRUSHED ALUMINUM KICK PLATE<br>ALUMINUM RAINDROP CAP |

DOOR SCHEDULE 1  
SCALE: N.T.S.