

CORNER RECORD

Agency Index

BK 122 PG 18

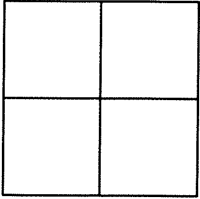
Document Number

CR 11871

City of EDEN TOWNSHIP

County of ALAMEDA, California

Brief Legal Description MONUMENT LOCATED WITHIN CHANNEL ST AT VIA LACQUA



CORNER TYPE

COORDINATES (Optional)

Government Corner ☐ Control ☒
Meander ☐ Property ☐
Rancho ☐ Other ☐

N. --- E. ---
Elevation ---

Units Metric ☐ U.S. Survey Foot ☐

Horizontal Datum ---

Zone --- Epoch Date ---

Vertical Datum ---

☐ Complies with Public Resources Code §§8801-8819

☐ Complies with Public Resources Code §§8890-8902

Date of Survey 7/21/18

PLS Act Ref: ☐ 8765(d) ☒ 8771 ☐ 8773 ☐ Other:

Corner/
Monument: ☐ Left as found ☐ Established ☒ Rebuilt ☐ Pre-Construction
☐ Found and tagged ☐ Reestablished ☐ Referenced ☒ Post-Construction

Narrative of corner identified and monument as found, set, reset, replaced, or removed:

☐ See sheet #2 for description(s) : SEE CR 11238

SET BRASS DISC WITH PUNCH IN MONUMENT WELL LS 8525

FOUND AND SET POINTS AS SHOWN ON PAGE 2.

THIS POINT WAS INSTALLED AFTER A CONSTRUCTION PROJECT IN THE VICINITY.

THE TIES SHOWN HEREON ARE FOR THE PURPOSE OF PERPETUATING FOUND MONUMENTATION.

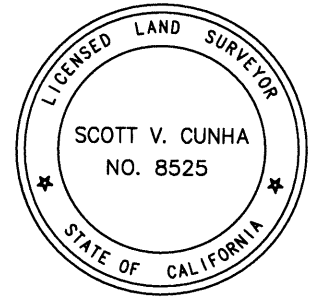
NO CLAIM IS MADE AS TO THE RELATIONSHIP OF THE POINTS OR LINES SHOWN HEREON TO TRUE BOUNDARY LOCATION.

SURVEYOR'S STATEMENT

This Corner Record was prepared by me or under my direction in conformance with

the Professional Land Surveyors' Act on JULY 22, 2018.

Signed SCOTT V. CUNHA P.L.S. or R.C.E. No. LS 8525



COUNTY SURVEYOR'S STATEMENT

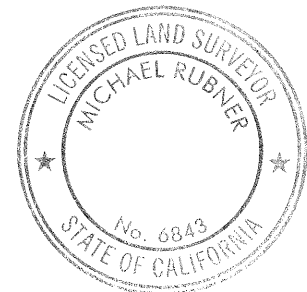
This Corner Record was received 24 JULY 2018

and examined and filed 17 JULY 2019.

Signed MICHAEL RUBNER P.L.S. or R.C.E. No. 6843

Title COUNTY SURVEYOR

County Surveyor's Comment

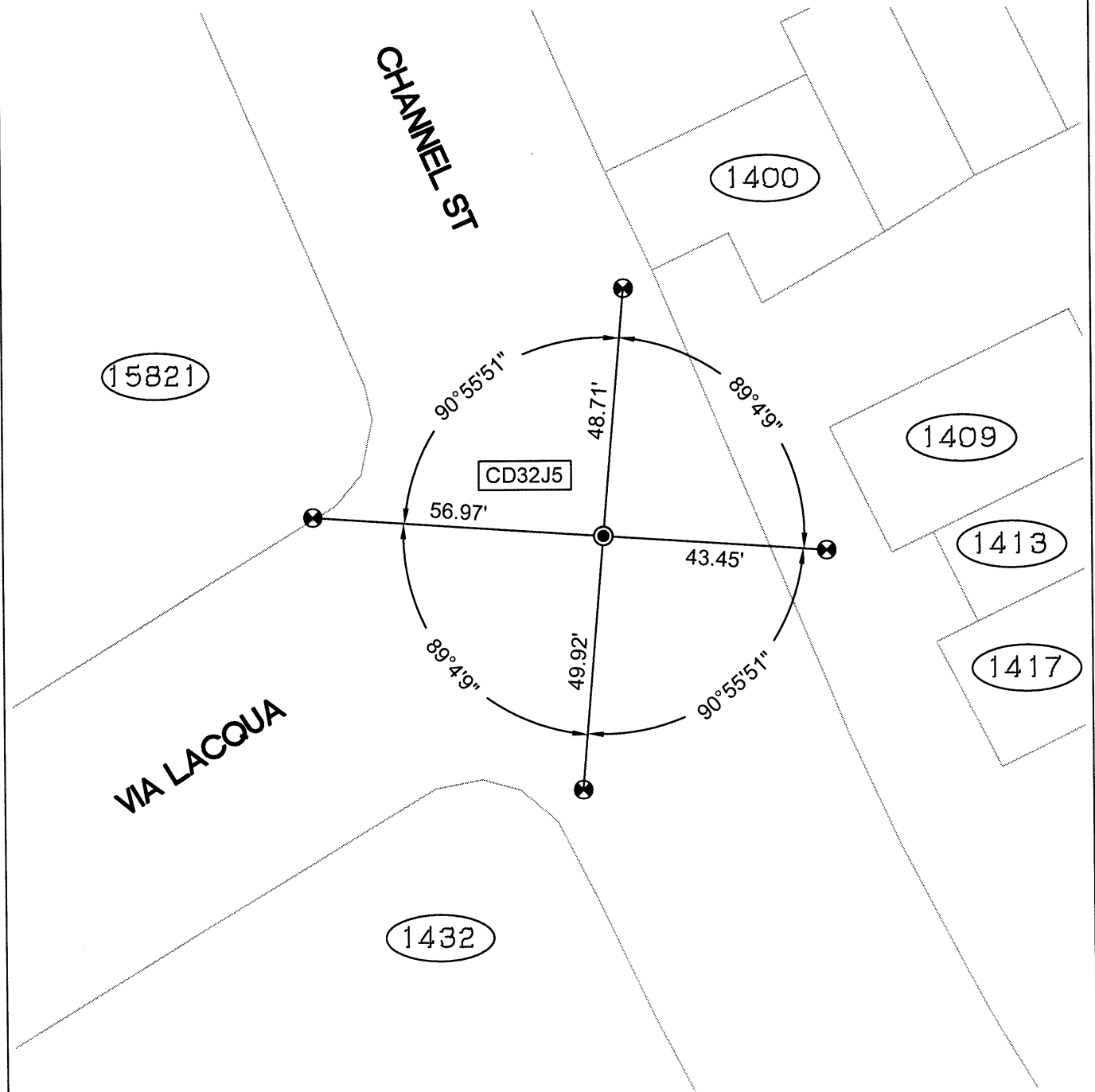


SPEC-2353-Post

SCALE: 1"=30'

LEGEND

- SET BRASS DISC AND PUNCH IN MONUMENT WELL LS 8525
- ⊗ FOUND CUT CROSS IN WALK
- ✕ FOUND CUT CROSS IN CURB
- ✕ FOUND MAG AND SHINER
- FOUND REBAR & CAP STAMPED "CEI RP"
- AA##A# ALAMEDA COUNTY MONUMENT ID
- 19592 REFERENCE STREET ADDRESS



218049-Channel-Post-CR-14