

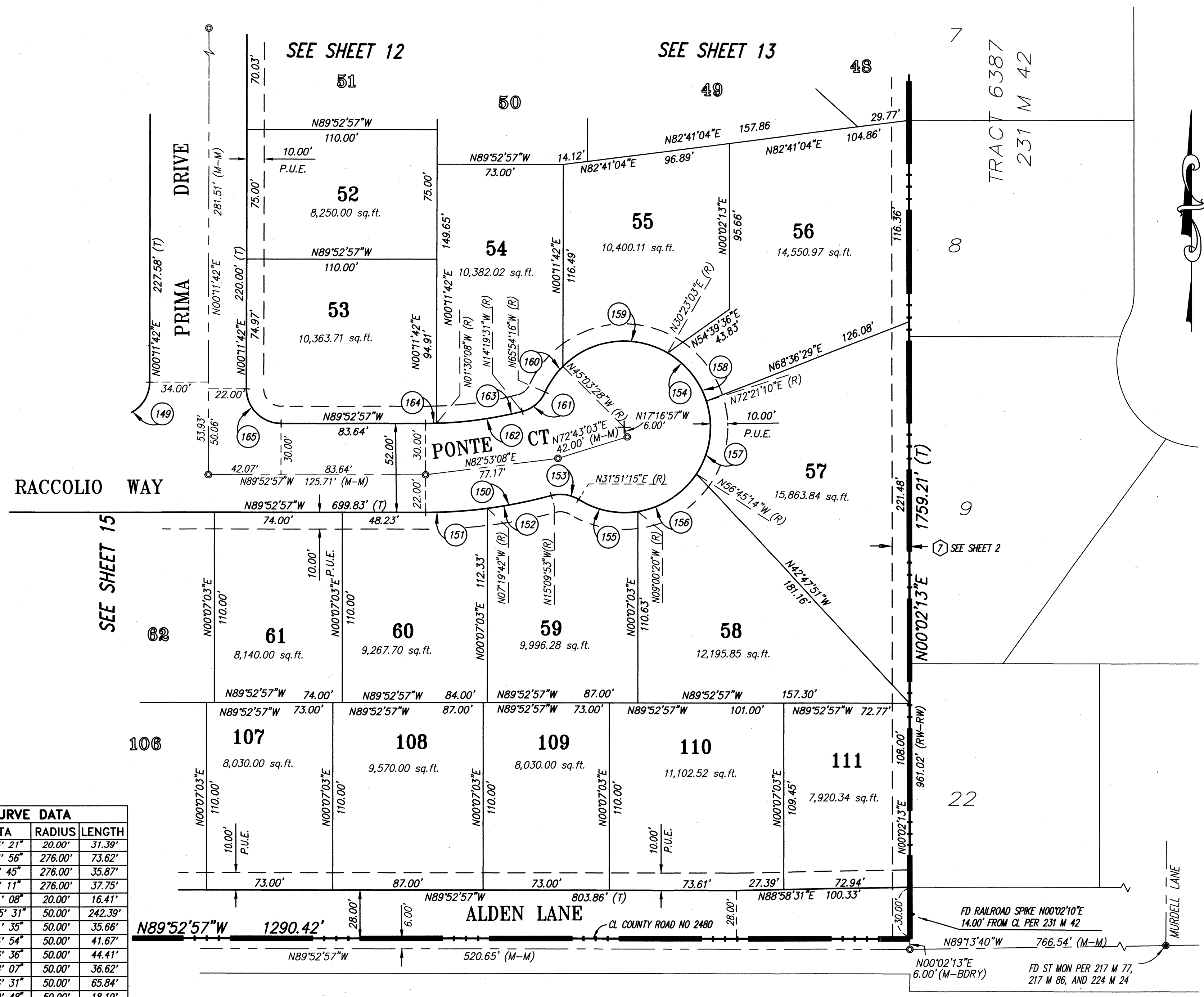
TRACT 7087

MAP BK 250

PL 102

F:\JOBS\70071-10 FM-16.DWG 11:26 AM 02/25/2000

CURVE DATA			
#	DELTA	RADIUS	LENGTH
149	89° 55' 21"	20.00'	31.39'
150	15° 16' 56"	276.00'	73.62'
151	7° 26' 45"	276.00'	35.87'
152	7° 50' 11"	276.00'	37.75'
153	47° 01' 08"	20.00'	16.41'
154	277° 45' 31"	50.00'	242.39'
155	40° 51' 35"	50.00'	35.66'
156	47° 44' 54"	50.00'	41.67'
157	50° 53' 36"	50.00'	44.41'
158	41° 58' 07"	50.00'	36.62'
159	75° 26' 31"	50.00'	65.84'
160	20° 50' 48"	50.00'	18.19'
161	51° 34' 45"	20.00'	18.00'
162	14° 26' 34"	224.00'	56.46'
163	12° 49' 23"	224.00'	50.13'
164	1° 37' 11"	224.00'	6.33'
165	90° 04' 39"	20.00'	31.44'



BASIS OF BEARINGS
BEARINGS SHOWN HEREON ARE BASED UPON THE LINE BETWEEN FOUND MONUMENTS ON CONCANNON BOULEVARD SHOWN ON THE MAP OF TRACT 5866 (217 M 86) AS N88°53'25"W.

LEGEND OF TERMS & SYMBOLS

--- BOUNDARY OF TRACT 7087
--- EASEMENT LINE
--- MONUMENT LINE
--- LOT LINE
--- RIGHT OF WAY LINE
--- CENTER LINE
--- CITY LIMIT LINE

○ SET STREET MONUMENT, LS 5311
● FND STREET MONUMENT AS NOTED
○ SET 5/8" REBAR & PLASTIC CAP LS 5311
● FOUND SURVEY POINT AS NOTED
● IB FOUND IRON BOLT, AS NOTED
● RRS FOUND RAILROAD SPIKE, AS NOTED
● FOUND NAIL, AS NOTED
● FD FOUND
● IP IRON PIPE
● PM PARCEL MAP
● # M # BOOK NO. OF MAPS & PAGE NO.
● EASEMENT NUMBER
● P.U.E. PUBLIC UTILITY EASEMENT
● E.V.A.E. EMERGENCY VEHICLE ACCESS EASEMENT
● L.E. LANDSCAPE EASEMENT
● S.S.E. SANITARY SEWER EASEMENT
● S.D.E. STORM DRAINAGE EASEMENT
● S.O.E. STORMWATER OVERFLOW EASEMENT
● (M-M) MONUMENT TO MONUMENT
● (M-TL) MONUMENT TO TRACT LIMIT
● (R) RADIAL BEARING
● (T) TOTAL
● sq.ft. or s.f. SQUARE FEET
● STREET CENTERLINE
● [] RECORD INFORMATION, REF. NOTED
● { } RECORD INFORMATION, REF. NOTED
● RELINQUISHMENT OF ABUTTER'S RIGHTS AND PRIVATE ACCESS PROHIBITED

TRACT 7087
PRIMA
A PORTION OF PLOT 21, BERNAL PORTION OF THE RANCHO EL VALLE DE SAN JOSE (87-344604)
CITY OF LIVERMORE - CALIFORNIA
MILANI & ASSOCIATES
3480 BUSKIRK, SUITE 225
PLEASANT HILL, CALIFORNIA 94523
MARCH, 1999 **SCALE 1"=40'**