

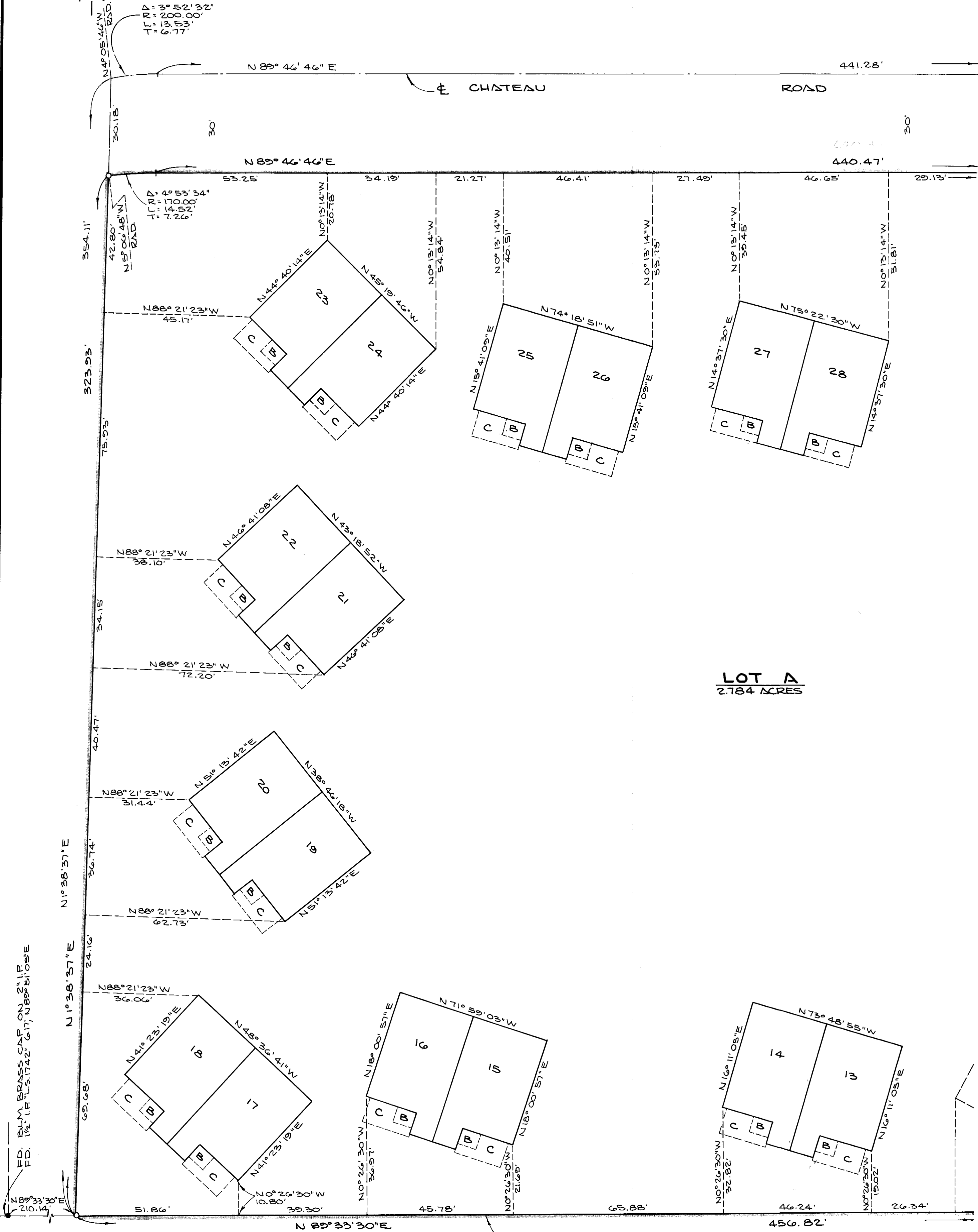
TRACT N° 36-44 CHATEAU SANS NOM

MONO COUNTY, CALIFORNIA

AUGUST, 1972
30 LOTS & LOT A

GERALD F. OLDENBURG, L.S.3246
3.385 ACRES

WILLIAMSON & SCHMID, CIVIL ENGINEERS



LOT A
2.784 ACRES

SEE SHEET N° 2 FOR GENERAL NOTES.

SEE SHEET N° 2

Vol. 8, pg. 16-B