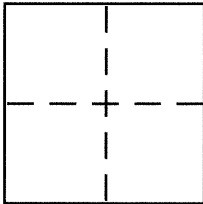


CORNER RECORDDocument Number CR 8294City of BERKELEYCounty of ALAMEDA, CaliforniaBrief Legal Description CITY OF BERKELEY MONUMENT B1274**CORNER TYPE**

Government Corner . Control ☒
 Meander . Property .
 Rancho . Other .
 Date of Survey 3-14-2016

COORDINATES (Optional)

N. _____
 E. _____
 Zone _____ NAD27 . NAD83 .
 NAD83 Epoch _____
 Elev. _____
 Vert. Datum: NGVD29 . NAVD88 .
 Meas. Units: Metric . Imperial .

Corner – Left as found ☒ Found and tagged . Established . Reestablished . Rebuilt .

Identification and type of corner found: Evidence used to identify or procedure used to establish or reestablish the corner:
IN COMPLIANCE WITH SECTION 8771 OF THE PROFESSIONAL LAND SURVEYORS' ACT, THIS CORNER
RECORD IS BEING FILED TO ESTABLISH THE POSITION OF AN EXISTING MONUMENT PRIOR TO
STREET REHABILITATION CONSTRUCTION.

A description of the physical condition of the monument as found and as set or reset:
SEE PAGE 2

SURVEYOR'S STATEMENT

This Corner Record was prepared by me or under my direction in conformance with

the Land Surveyor's Act on 4-4-2016

Signed [Signature] P.L.S. or R.C.E. No. 5003

COUNTY SURVEYOR'S STATEMENT

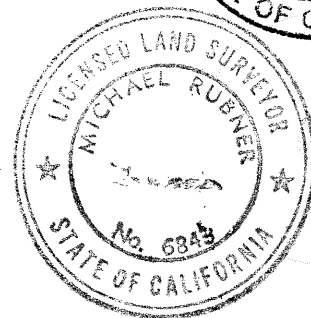
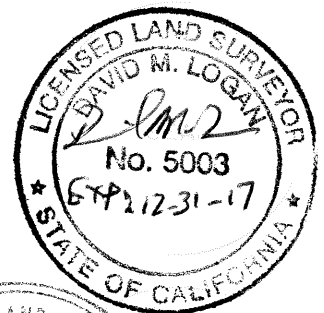
This Corner Record was received 25 APRIL, 2016

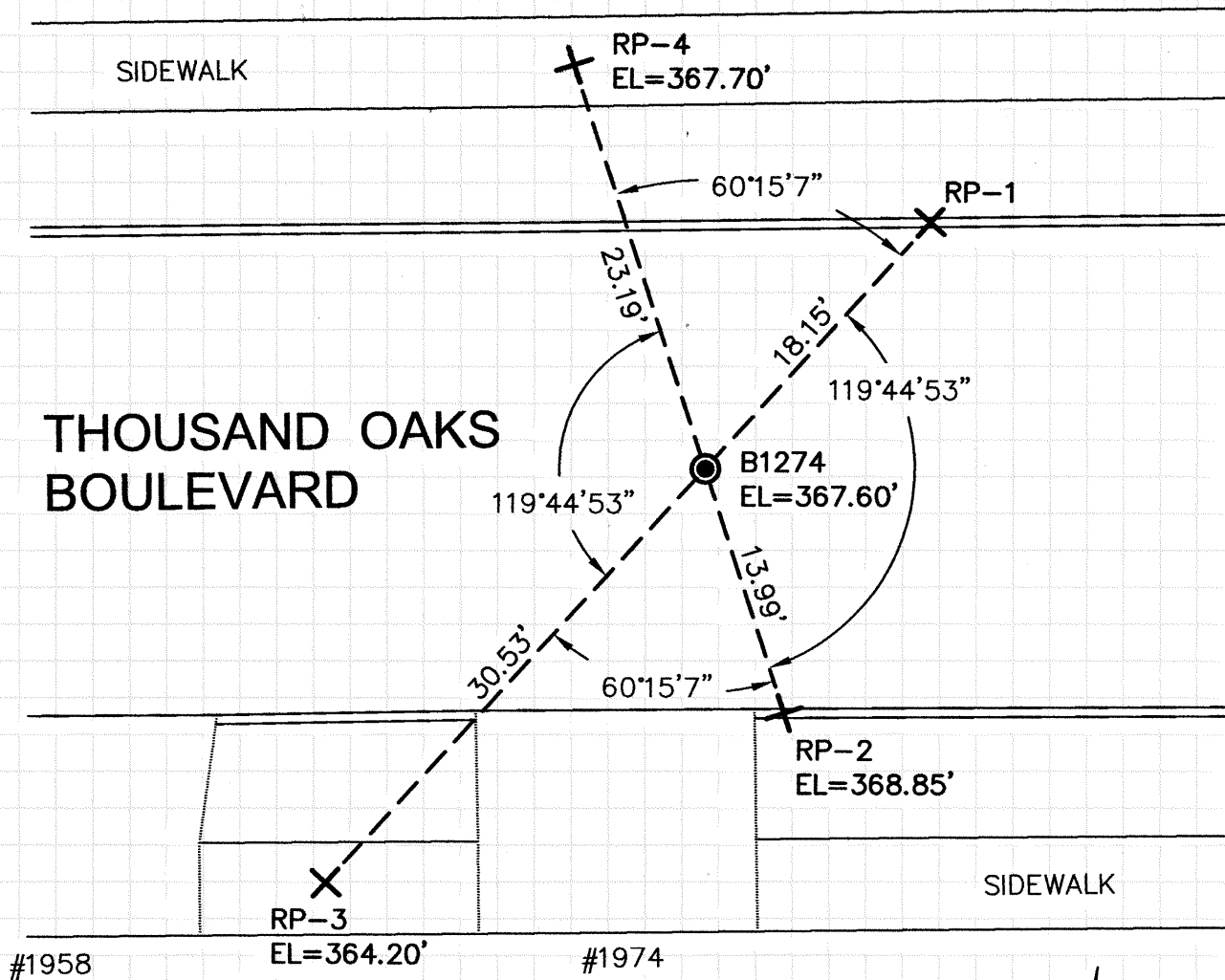
and examined and filed 4 MAY, 2016

Signed Michael Rubner P.L.S. or R.C.E. No. 6843

Title COUNTY SURVEYOR

County Surveyor's Comment _____

**ND44W7**



APPROXIMATE
SCALE 1"=10'

LEGEND

- 3/8" BRASS PIN CITY MONUMENT IN A STANDARD MONUMENT WELL
- + SET REFERENCE CROSS

NOTE:

THE EXISTING MONUMENT AS SHOWN IS REFERENCED BY STRAIGHT LINES BETWEEN RP-1 TO RP-3 AND RP-2 TO RP-4.