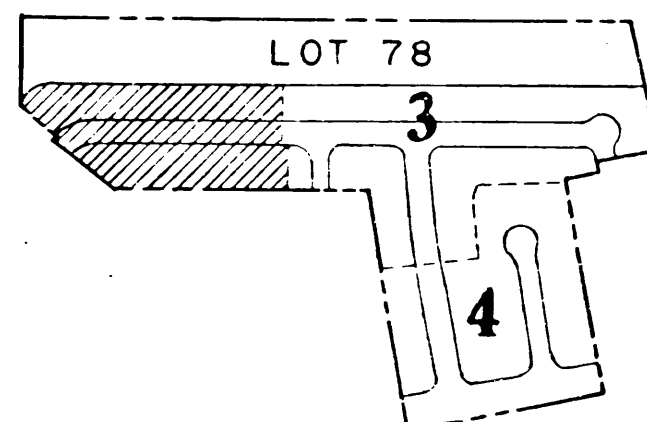
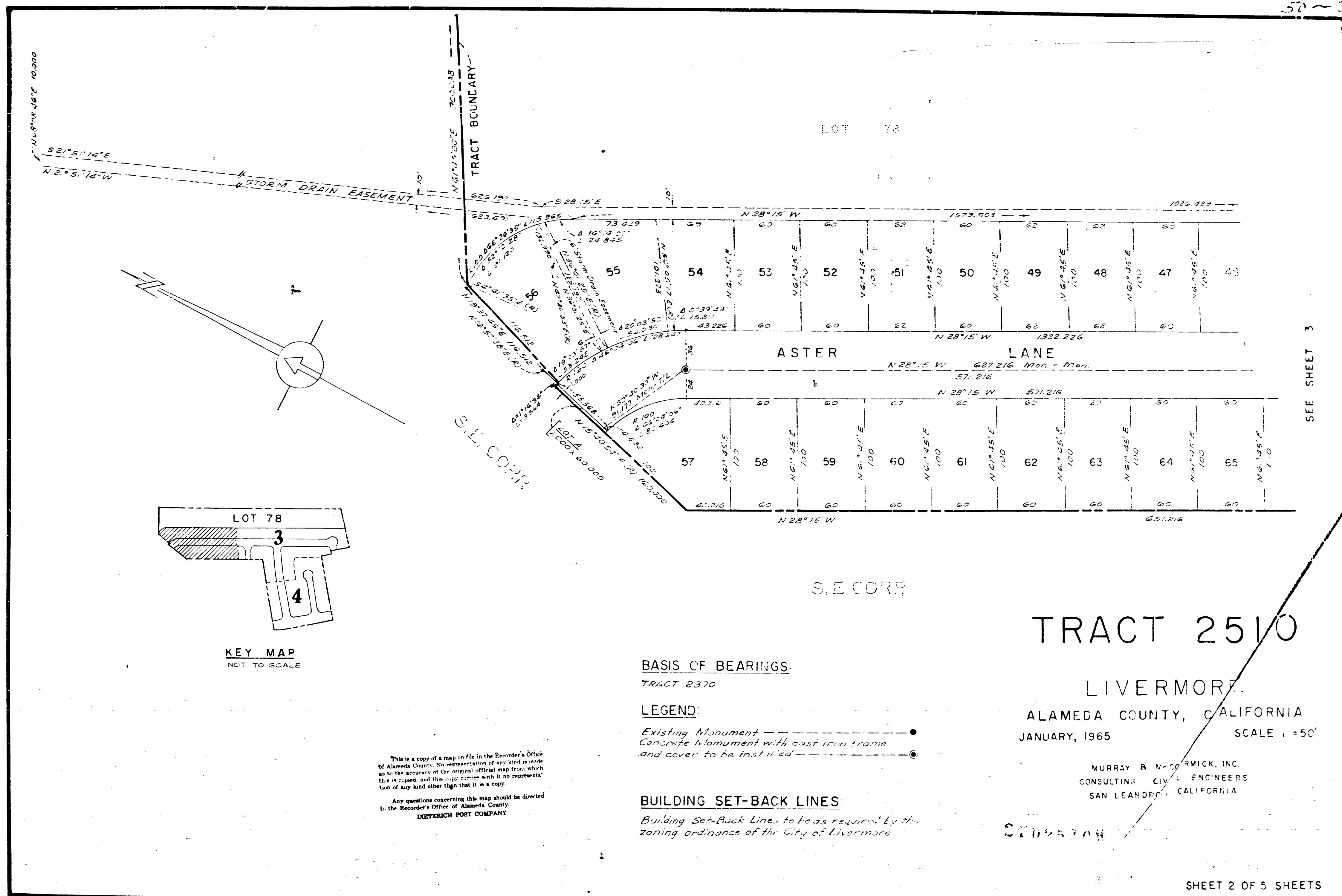


57 ~ 31 to 33

50/31-33



KEY MAP  
NOT TO SCALE

This is a copy of a map on file in the Recorder's Office of Alameda County. No representation of any kind is made as to the accuracy of the original official map from which this is copied, and this copy carries with it no representation of any kind other than that it is a copy.

Any questions concerning this map should be directed to the Recorder's Office of Alameda County.

DIETERICH POST COMPANY

BASIS OF BEARINGS:  
TRACT 2370

LEGEND:

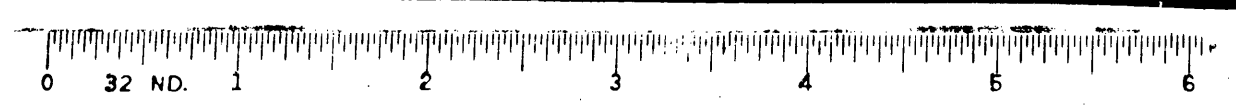
Existing Monument —●—  
Concrete Monument with cast iron frame and cover to be installed —○—

BUILDING SET-BACK LINES:  
Building Set-Back Lines to be as required by the zoning ordinance of the City of Livermore

TRACT 2510  
LIVERMORE  
ALAMEDA COUNTY, CALIFORNIA  
JANUARY, 1965  
SCALE: 1" = 50'

MURRAY & MCCORMICK, INC.  
CONSULTING CIVIL ENGINEERS  
SAN LEANDRO, CALIFORNIA

STATION



501