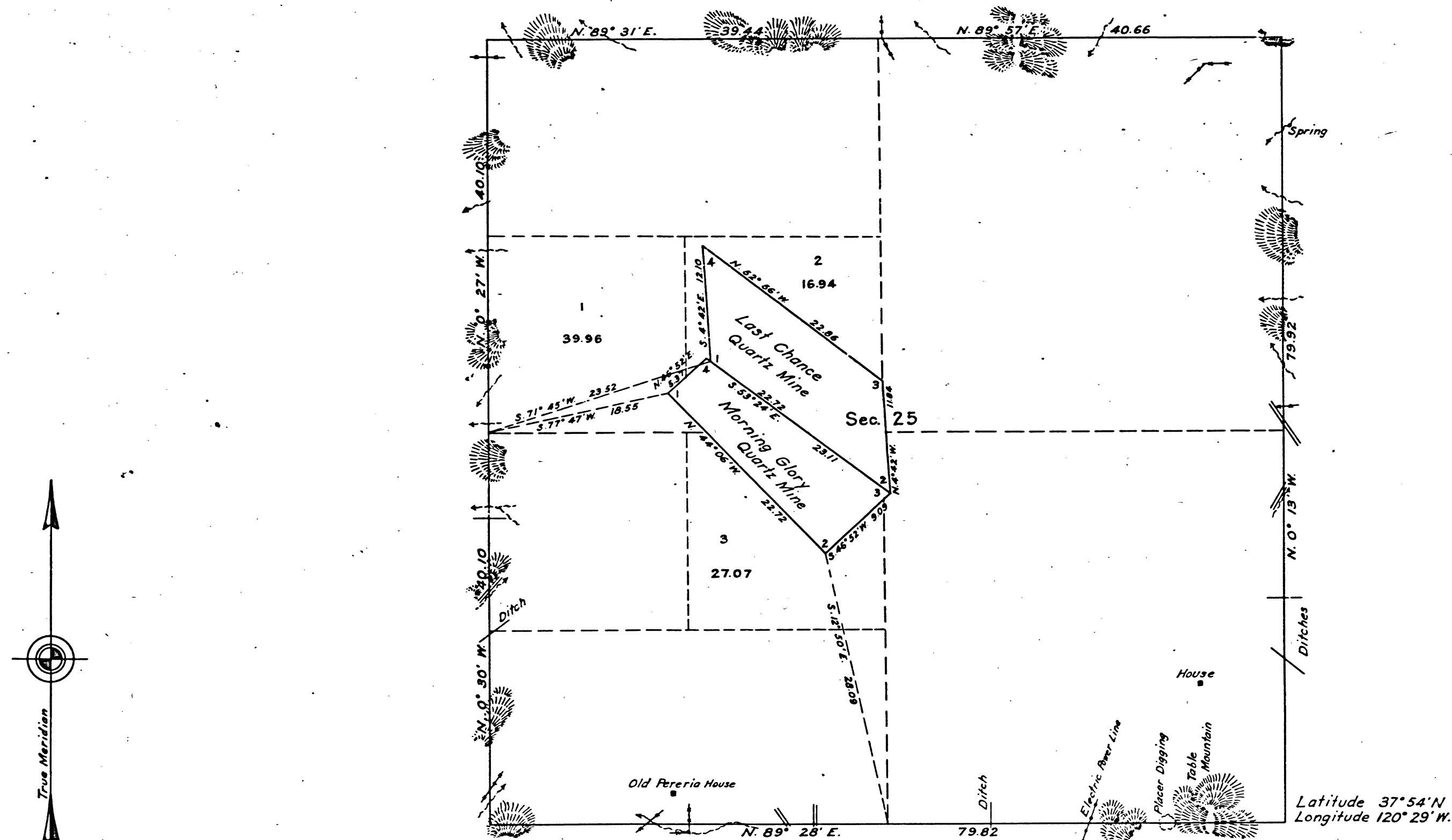


TOWNSHIP N° 1 NORTH, RANGE N° 13 EAST, MOUNT DIABLO MERIDIAN, CALIFORNIA.
SUPPLEMENTAL PLAT OF SECTION 25.



Dependent resurvey of the boundaries of section 25, with metes-and-bounds survey of land classified as mineral bearing, and connecting lines, deriving lottings of fractional areas of adjoining nonmineral land, to accommodate additional stockraising homestead entry Sacramento 014082, executed by Dupree R. Averill, U.S. Surveyor, October 1 to 7, 1932, inclusive, under special instructions dated August 28, 1929, for Group No. 237, authorized by the Commissioner's letter "E" dated July 20, 1929.

East boundary of section 25 surveyed by Fleming Amyx, D.S., in 1859. This line resurveyed and subdivisional boundaries of section 25 surveyed by A.B. Beauvais, D.S., in 1869, as shown upon the plat approved February 18, 1871.

0 5 10 20
Scale: 10 chains to an inch.

LINES DESIGNATED	MILEAGE	
	MLS	CHS
Exterior		79.92
Subdivisional	3	0.12
Mining Claims	1	27.09
Miscellaneous		70.16

Office of U.S. Supervisor of Surveys
Denver, Colorado, Jan. 27, 1933.

The above supplemental plat of section 25, Township No. 1 North, Range No. 13 East, of the Mount Diablo Meridian, California, is strictly conformable to the field notes of the survey thereof which have been examined and approved.

Quinn H. Johnson
U.S. Supervisor of Surveys.

DEPARTMENT OF THE INTERIOR
GENERAL LAND OFFICE
Washington, D.C., April 26, 1933.

The survey represented by this plat having been correctly executed in accordance with the requirements of law and the regulations of this office, is hereby accepted.

J. H. Caudill
Acting Assistant Commissioner.