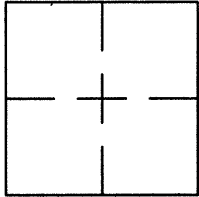


CORNER RECORDDocument Number CR 9618City of EDEN TOWNSHIPCounty of ALAMEDA, CaliforniaBrief Legal Description BRASS DISC MONUMENT LOCATED WITHIN THE INTERSECTION OF
MANCHESTER RD. AND CAROLYN ST.**CORNER RECORD**

Government Corner ☐ Control ☒
 Meander ☐ Property ☐
 Rancho ☐ Other ☐
 Date of Survey 12/8/16

COORDINATES
(Optional)

N. 2083395
 E. 6094383
 Zone _____ Datum _____
 Elev. _____

Corner — Left as found ☒ Found and tagged ☐ Established ☐ Reestablished ☐ Rebuilt ☐

Identification and type of corner found: Evidence used to identify or procedure used to establish or reestablish the corner:
FOUND BRASS DISC WITH NIPPLE IN MONUMENT WELL.

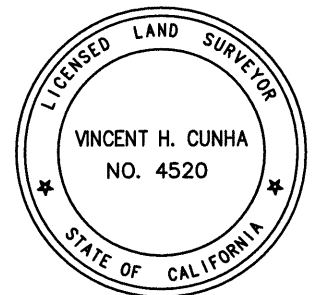
SEE CR 8845THIS POINT WAS FOUND IN GOOD CONDITION AFTER A CONSTRUCTION PROJECT IN THE VICINITY.

A description of the physical condition of the monument as found and as set or reset: _____

FOUND AND SET POINTS AS SHOWN ON PAGE 2.THE TIES SHOWN HEREON ARE FOR THE PURPOSE OF PERPETUATING FOUND MONUMENTATION.NO CLAIM IS MADE AS TO THE RELATIONSHIP OF THE POINTS OR LINES SHOWN HEREON TOTRUE BOUNDARY LOCATIONS.**SURVEYOR'S STATEMENT**

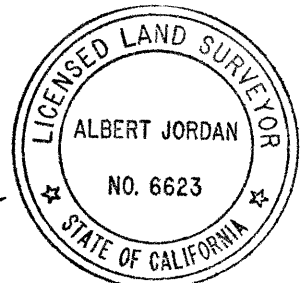
This Corner Record was prepared by me or under my direction in conformance with
 the Land Surveyors' Act on DECEMBER 14, 2016.

Signed Vincent H. Cunha L.S. Number LS 4520
VINCENT H. CUNHA

**COUNTY SURVEYOR'S STATEMENT**

This Corner Record was received 12-29 2016 and examined
 and filed 01-25 2017.

Signed Albert Jordan PLS 6623 Title Deputy County Surveyor



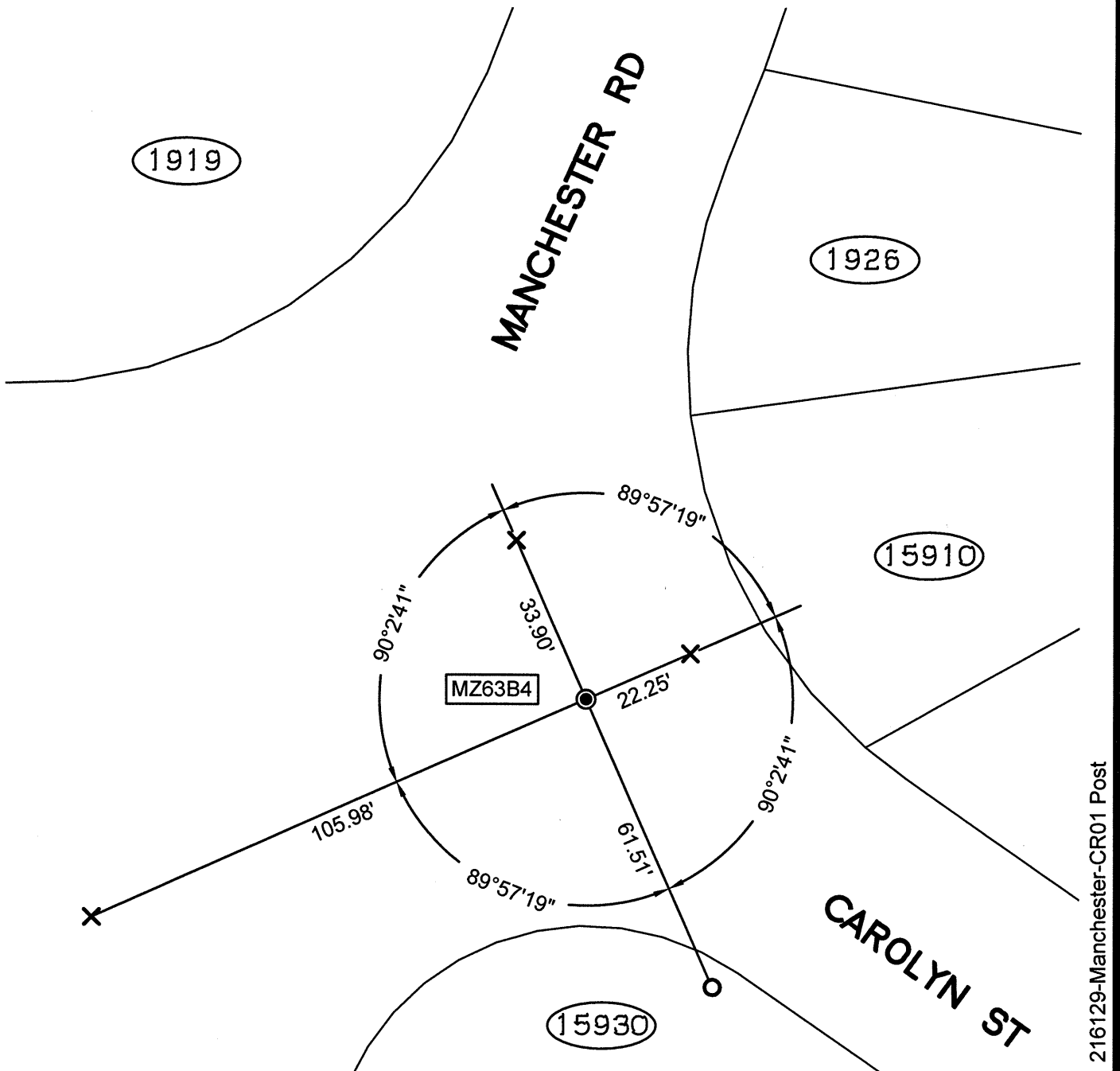
County Surveyor's Comment _____

SPEC-2303-POST

SCALE: 1"=30'

LEGEND

- FOUND BRASS DISC WITH NIPPLE IN MONUMENT WELL
- ⊗ FOUND CUT CROSS IN WALK
- ✕ FOUND CUT CROSS IN CURB
- ⊗ FOUND MAG AND SHINER
- FOUND REBAR & CAP STAMPED "CEI RP"
- AA### ALAMEDA COUNTY MONUMENT ID
- 19592 REFERENCE STREET ADDRESS



216129-Manchester-CR01 Post