

# PARCEL MAP 6400

## FOR CONDOMINIUM PURPOSES

BEING A RESUBDIVISION OF LOTS 5,6,7,8,9,10 AND 11,  
BLOCK 35, KELLERSBERGER'S MAP OF OAKLAND,  
FILED IN BOOK 7 OF MAPS AT PAGE 3, ALAMEDA  
COUNTY RECORDS.

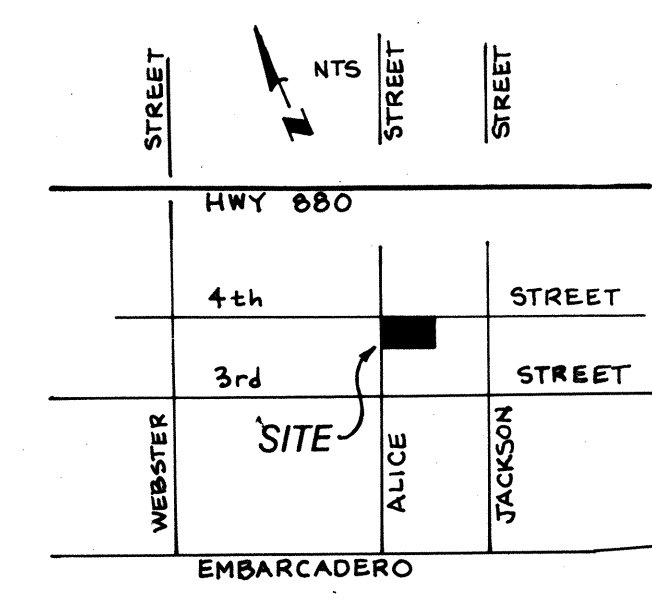
CITY OF OAKLAND  
COUNTY OF ALAMEDA  
STATE OF CALIFORNIA

SCALE: 1" = 30'

APRIL 1993

**KIER & WRIGHT**  
CIVIL ENGINEERS & SURVEYORS, INC.  
5880 West Las Positas Boulevard, Suite 34  
Pleasanton, California 94588

OWNERS:  
ALICE M. TURVILLE, JOSEPH M. FUETSCH, ALICE H. FUETSCH  
JOSEPH PEHANICK AND JOEL PEHANICK  
3070 ROSSMOOR PARKWAY #2  
ENTRY ONE  
WALNUT CREEK, CA 94596



VICINITY MAP

### LEGEND

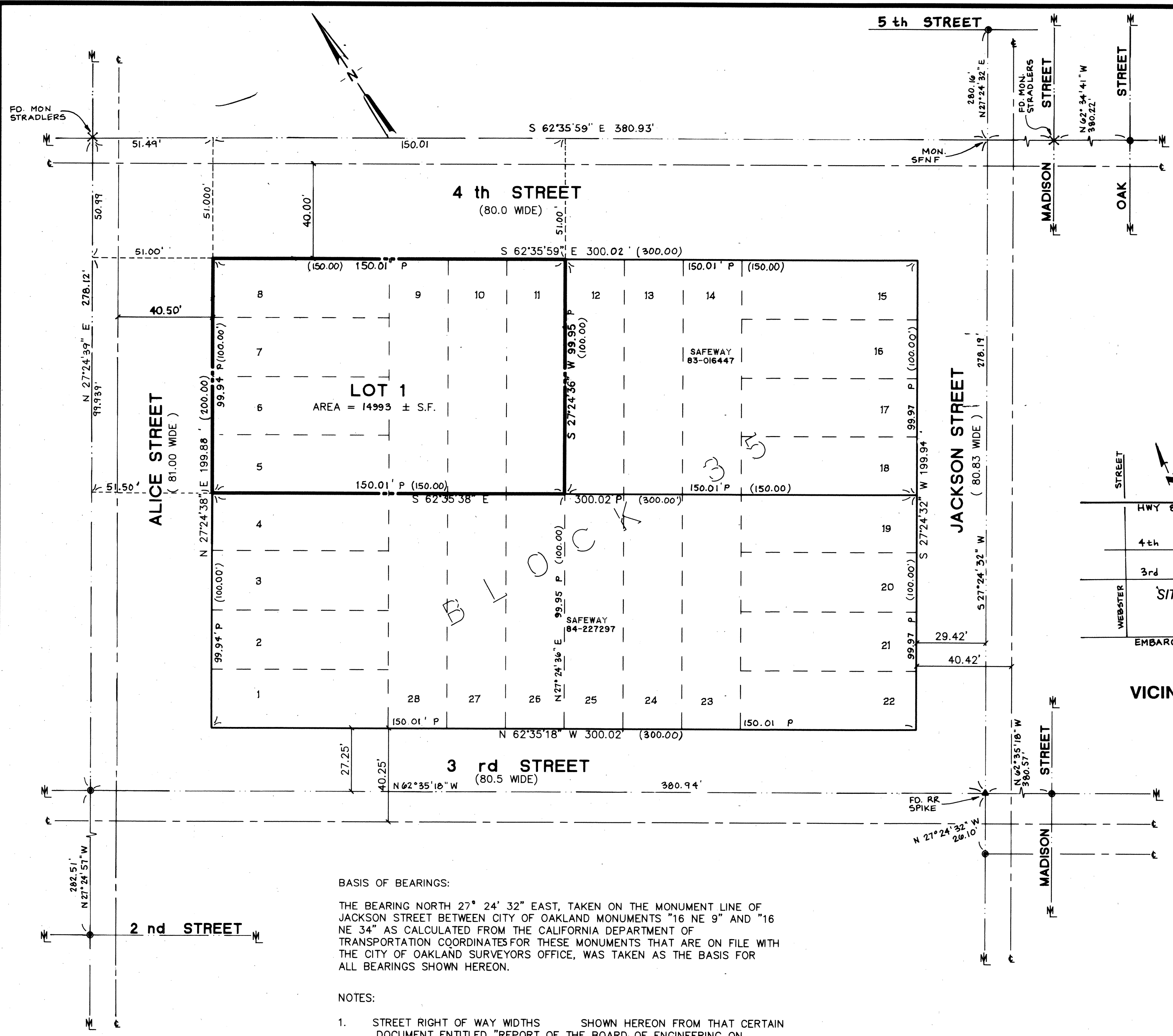
- PARCEL BOUNDARY LINE
- MONUMENT LINE (M)
- CENTER LINE (C)
- OLD LOT LINE
- FOUND CITY MONUMENT
- 99.939 P PRORATED DISTANCE
- ( ) RECORD DISTANCE
- SFNF SEARCHED FOR NOT FOUND

### BASIS OF BEARINGS:

THE BEARING NORTH 27° 24' 32" EAST, TAKEN ON THE MONUMENT LINE OF JACKSON STREET BETWEEN CITY OF OAKLAND MONUMENTS "16 NE 9" AND "16 NE 34" AS CALCULATED FROM THE CALIFORNIA DEPARTMENT OF TRANSPORTATION COORDINATES FOR THESE MONUMENTS THAT ARE ON FILE WITH THE CITY OF OAKLAND SURVEYORS OFFICE, WAS TAKEN AS THE BASIS FOR ALL BEARINGS SHOWN HEREON.

### NOTES:

- STREET RIGHT OF WAY WIDTHS SHOWN HEREON FROM THAT CERTAIN DOCUMENT ENTITLED "REPORT OF THE BOARD OF ENGINEERING ON GRADES, STREETS AND SEWERAGE IN THE CITY OF OAKLAND" DATED 1869, CITY FILE DOCUMENT 71-66.
- MONUMENT LINE LOCATIONS SHOWN HEREON WERE TAKEN FROM THE CITY OF OAKLAND MONUMENT MAP NO. 1488B476.



AKH, BK 208 Pg 67

Parcel Map 6400 Map Bk: 208 Pg. 67