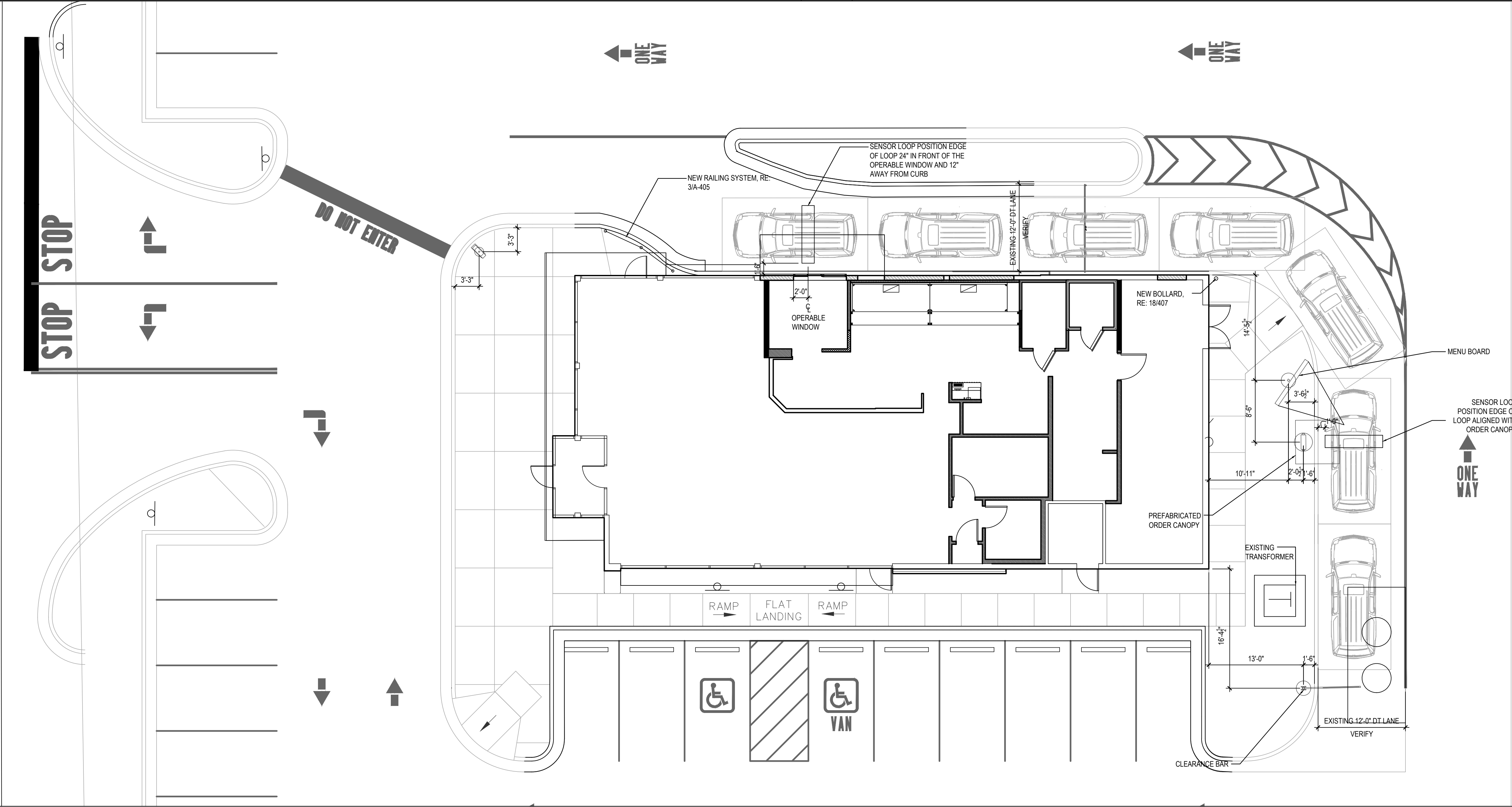


GUARD RAIL DETAIL 3  
Scale= 1/2" = 1'-0" A-405

DRIVE-THRU DETAILS 2  
Scale= 1/8" = 1'-0" A-405



DRIVE - THRU MENU BOARD LOCATION 1  
Scale= 1/8" = 1'-0" A-405



PANDA EXPRESS, INC.  
1683 Walnut Grove Ave.  
Rosemead, California  
91770  
Telephone: 626.799.9898  
Facsimile: 626.372.8288

All ideas, designs, arrangement and plans indicated or represented by this drawing are the property of Panda Express Inc. and were created for use on this specific project. None of these ideas, designs, arrangements or plans may be used by or disclosed to any person, firm, or corporation without the written permission of Panda Express Inc.

REVISIONS:		

ISSUE DATE:		
1st	DEVELOPER REVIEW	07.26.19
2nd	SITE PLAN SUBMITTAL	08.26.19
3rd	SITE COMMENTS	09.05.19
4th	ISSUE FOR PERMIT	10.01.19
5th	ISSUE FOR BID	11.07.19

DRAWN BY: PM / KL / EA

PANDA PROJECT #: S8-20-D7163  
ARCH PROJECT #: 19027



**Heights Venture**  
ARCHITECTURE + DESIGN

HOUSTON 1111 North Loop West, Suite 800 Houston, Texas 77008 713.869.1163 V  
DALLAS 5741 Legacy Drive, Suite 320 Plano, Texas 75024 972.490.7292 V

**PANDA EXPRESS**

2096 INTERSTATE DR.  
OPELIKA, AL, 36801  
3600 FSDT  
TWW REMODEL

**A-405**  
ARCHITECTURAL DETAILS  
DRIVE THRU

TRUE WARM & WELCOME

BID ISSUE