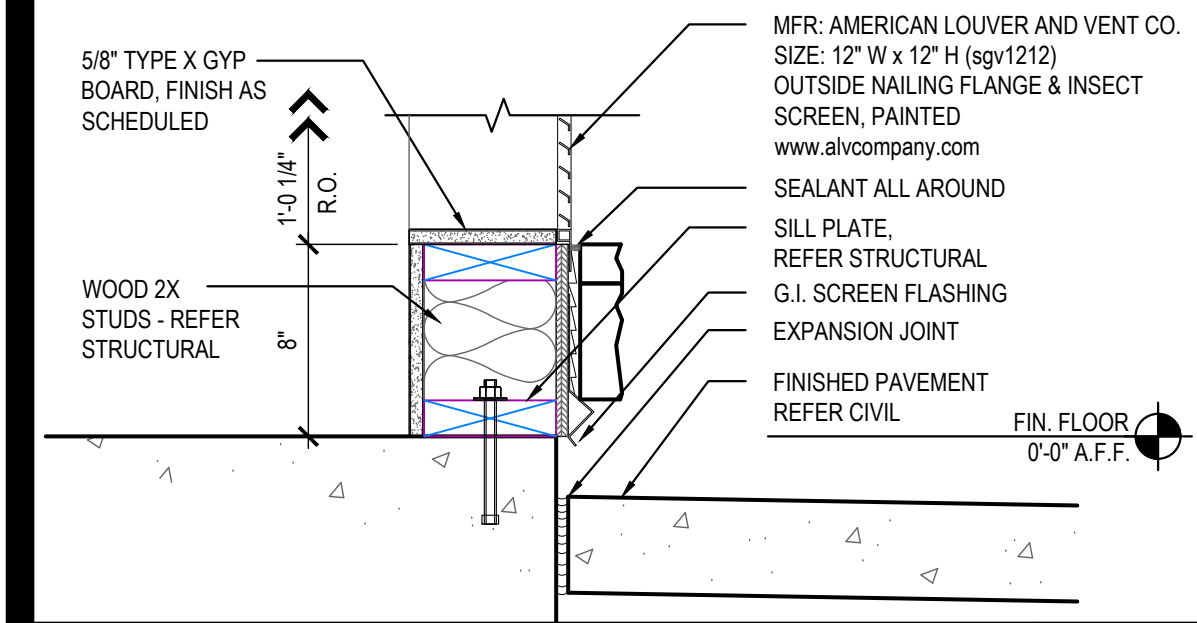


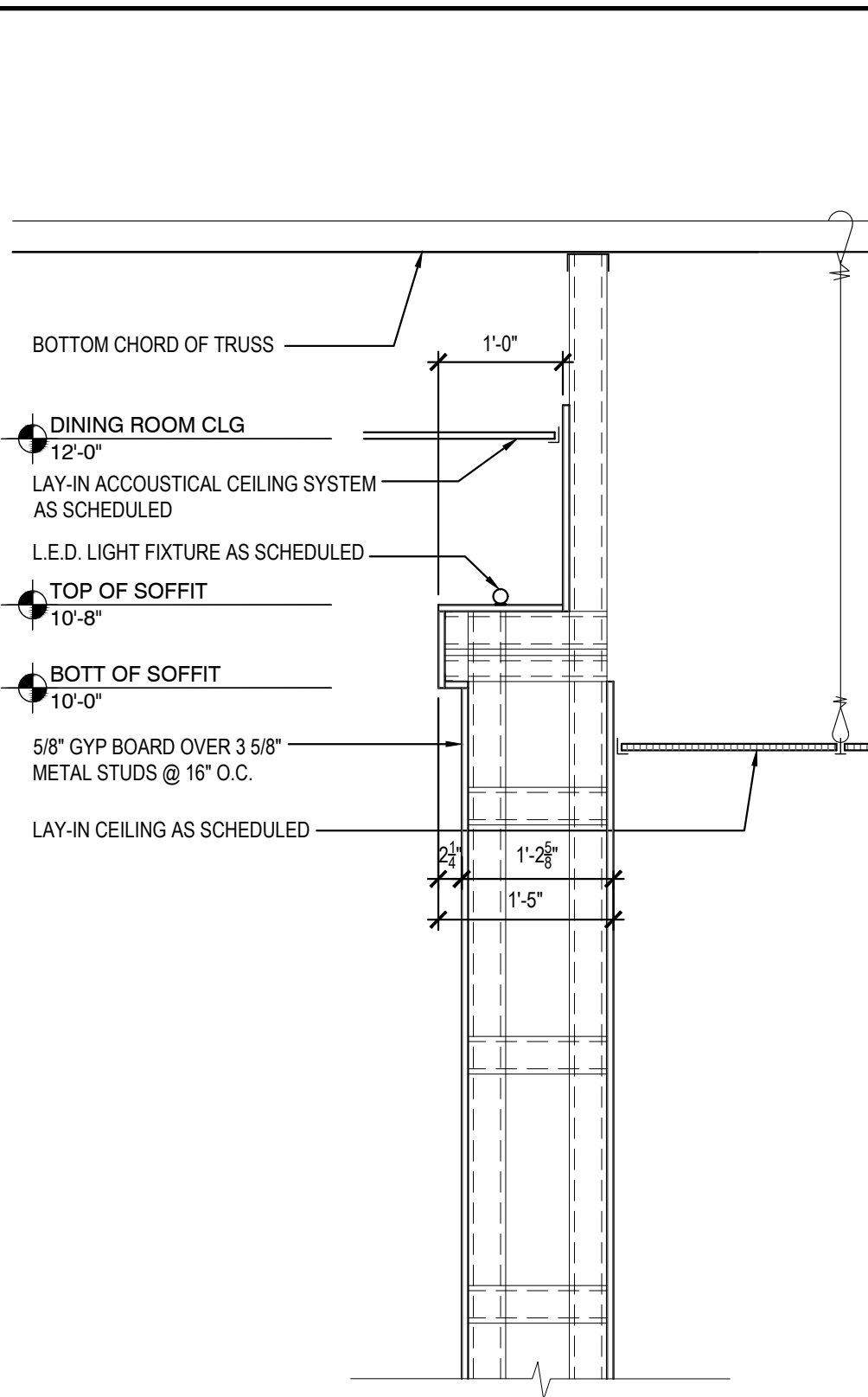
CANOPY DETAIL 11

Scale= 1 1/2" = 1'-0" A-402

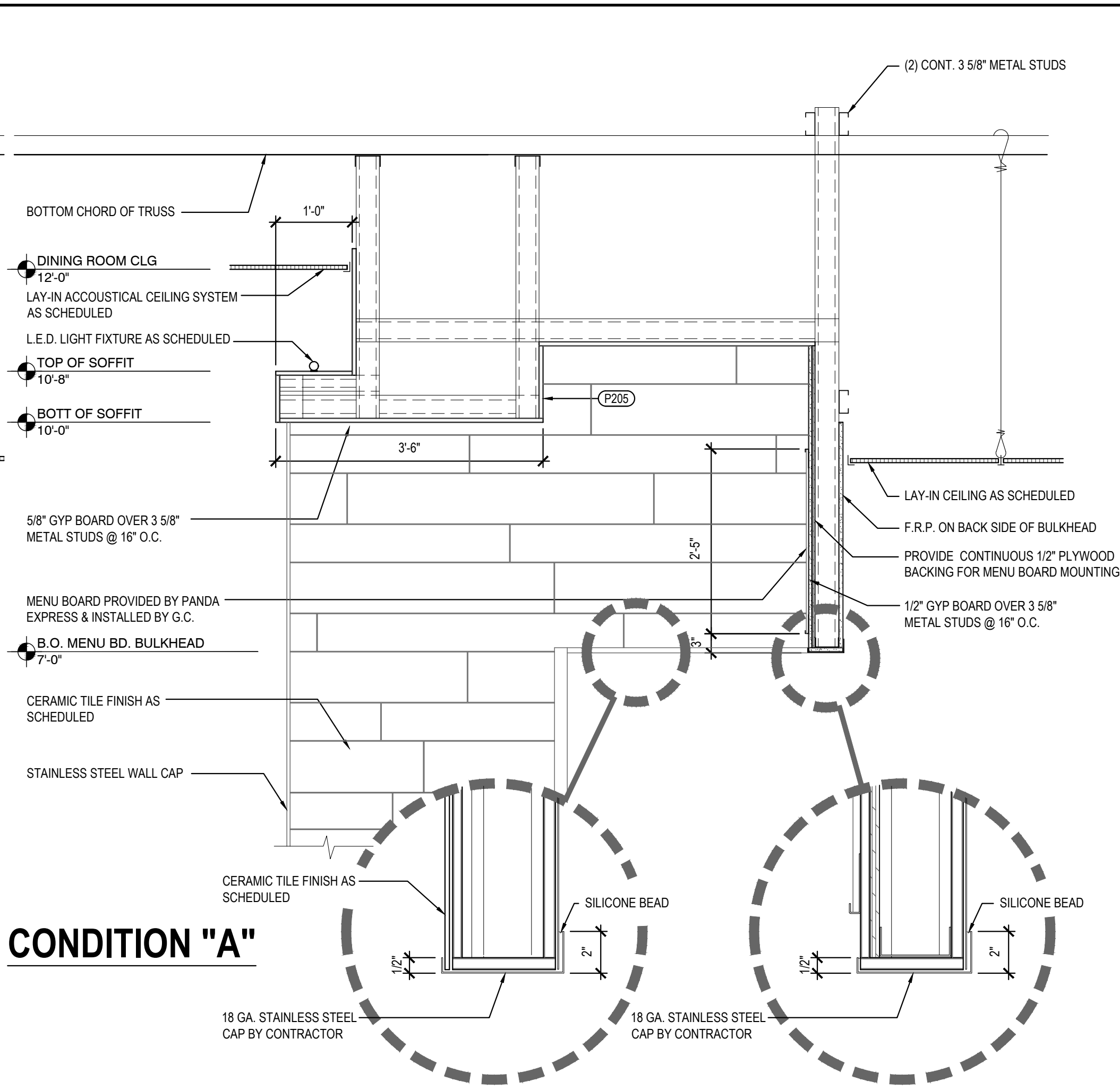


LOUVER DETAIL 10

(JAMB / HEAD SIM.) Scale= 1 1/2" = 1'-0" A-402



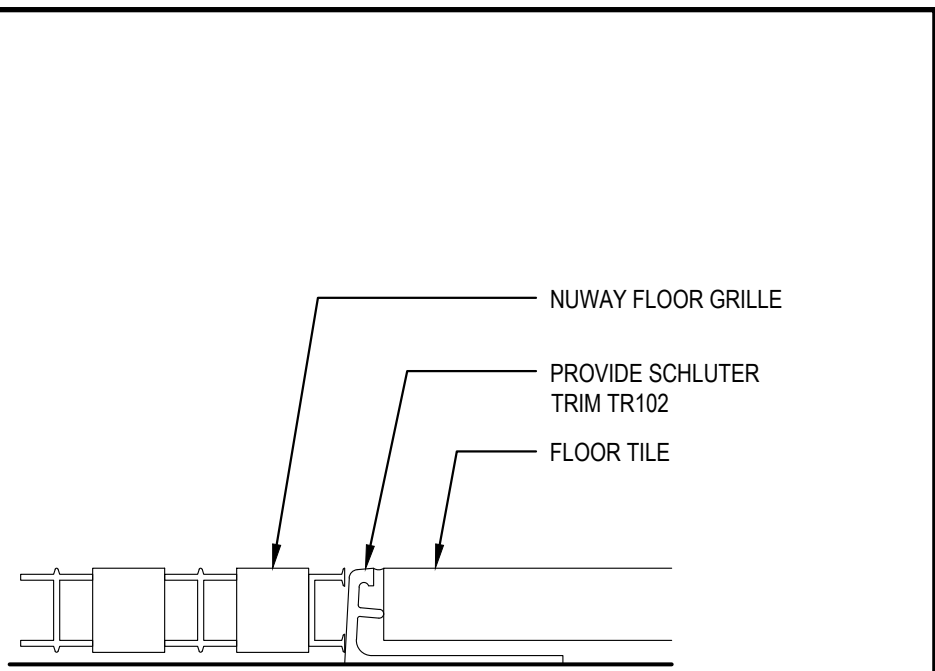
CONDITION "B"



CONDITION "A"

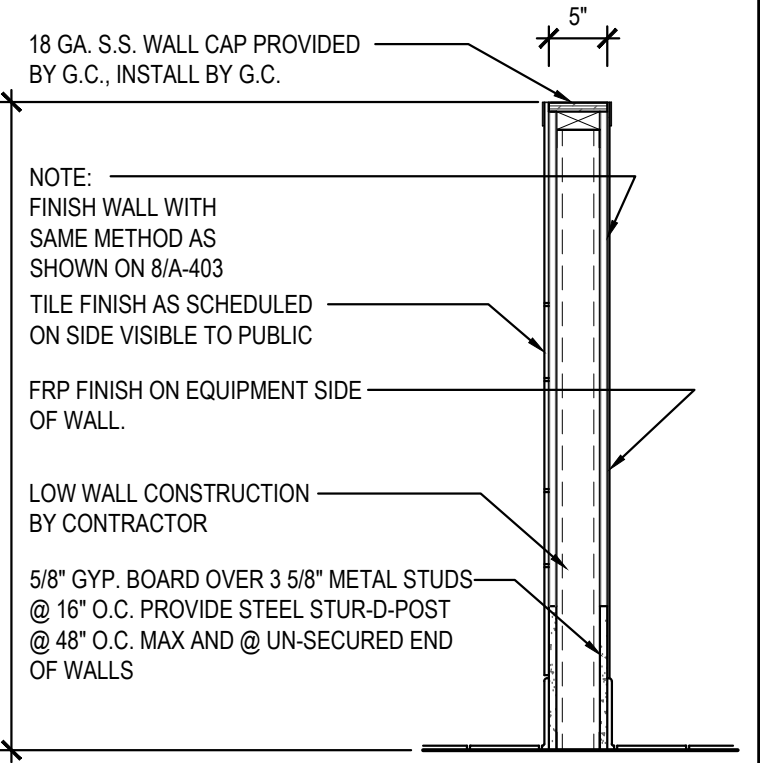
SERVICE COUNTER SOFFIT DETAILS 8

Scale= 3/4" = 1'-0" A-402



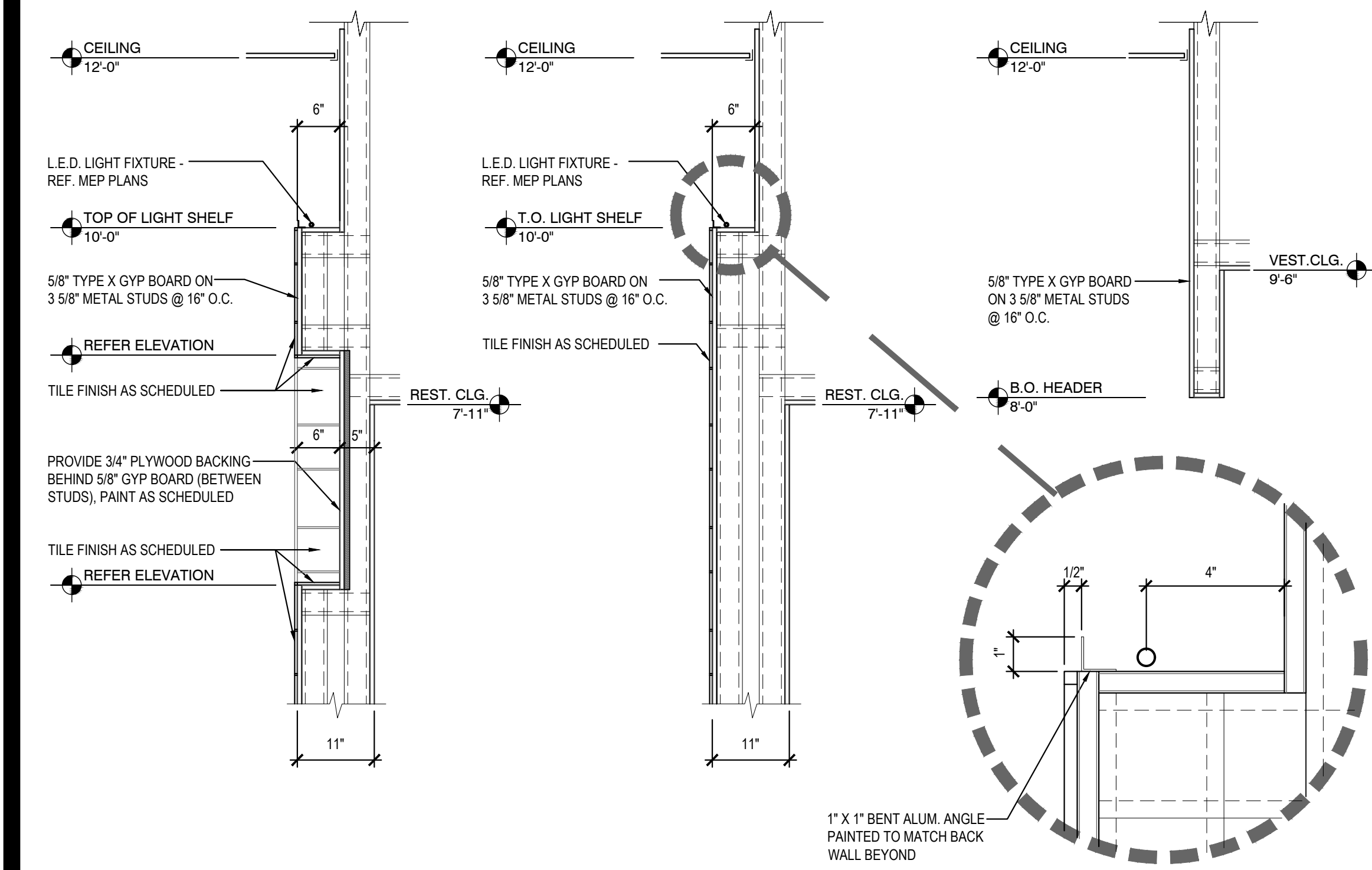
VESTIBULE FLOOR GRILLE 7

Scale= NTS A-402



LOW WALL DETAIL 2

Scale= 3/4" = 1'-0" A-402



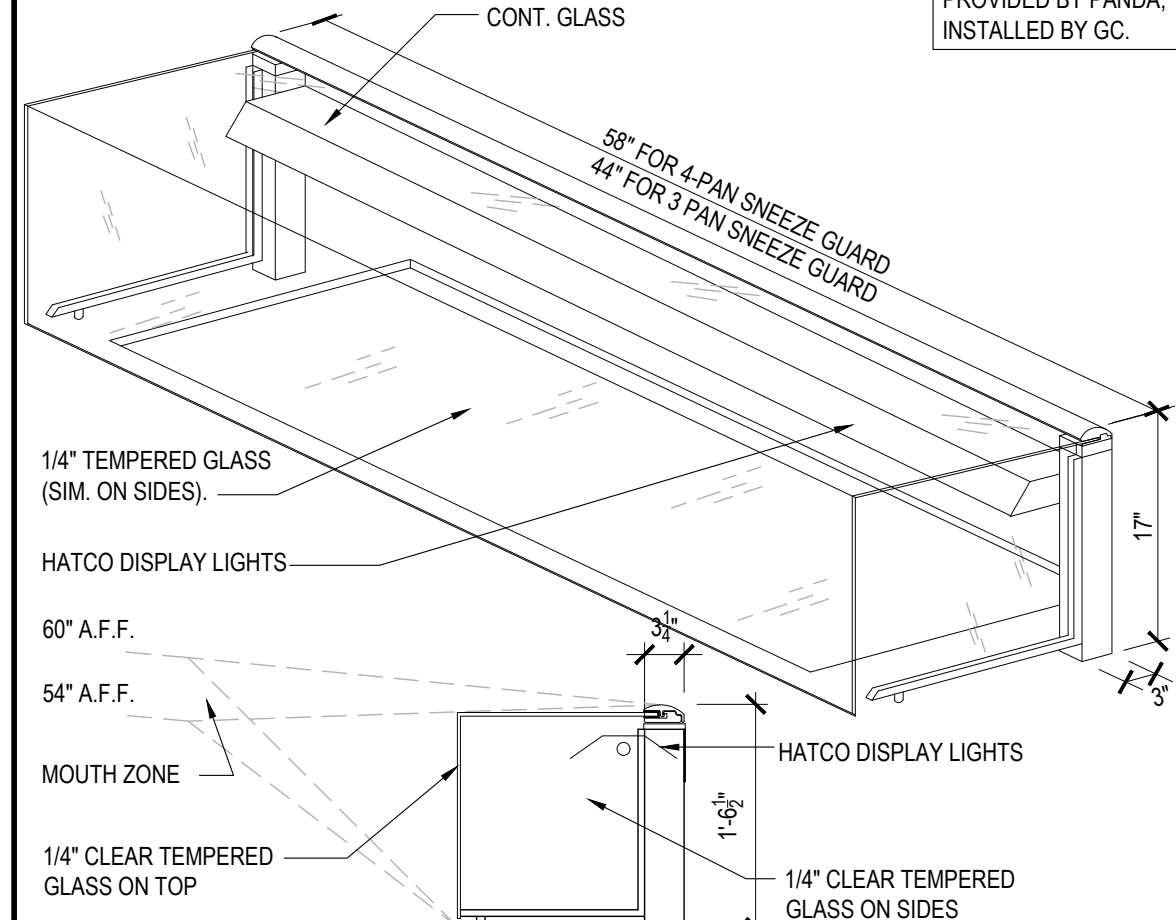
CONDITION "A"

CONDITION "B"

CONDITION "C"

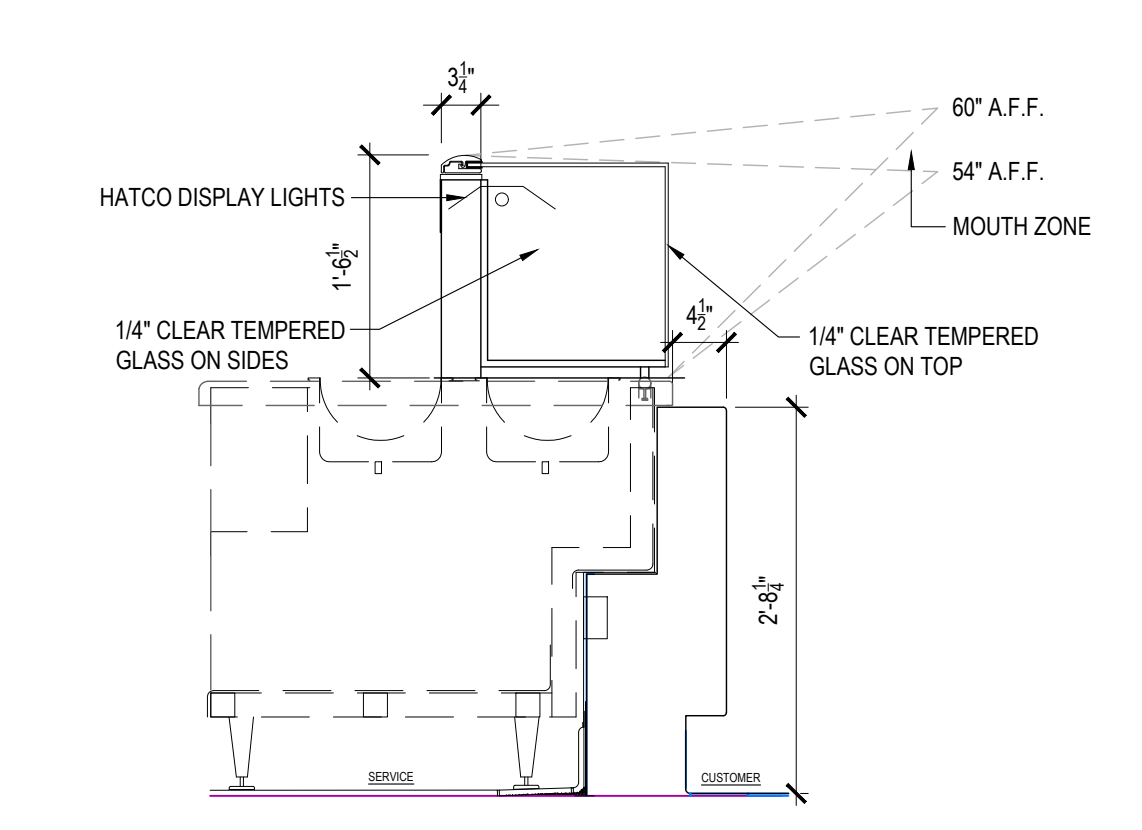
GYP BOARD FURRING DETAILS @ BACK WALL OF DINING ROOM 9

Scale= 3/4" = 1'-0" A-402



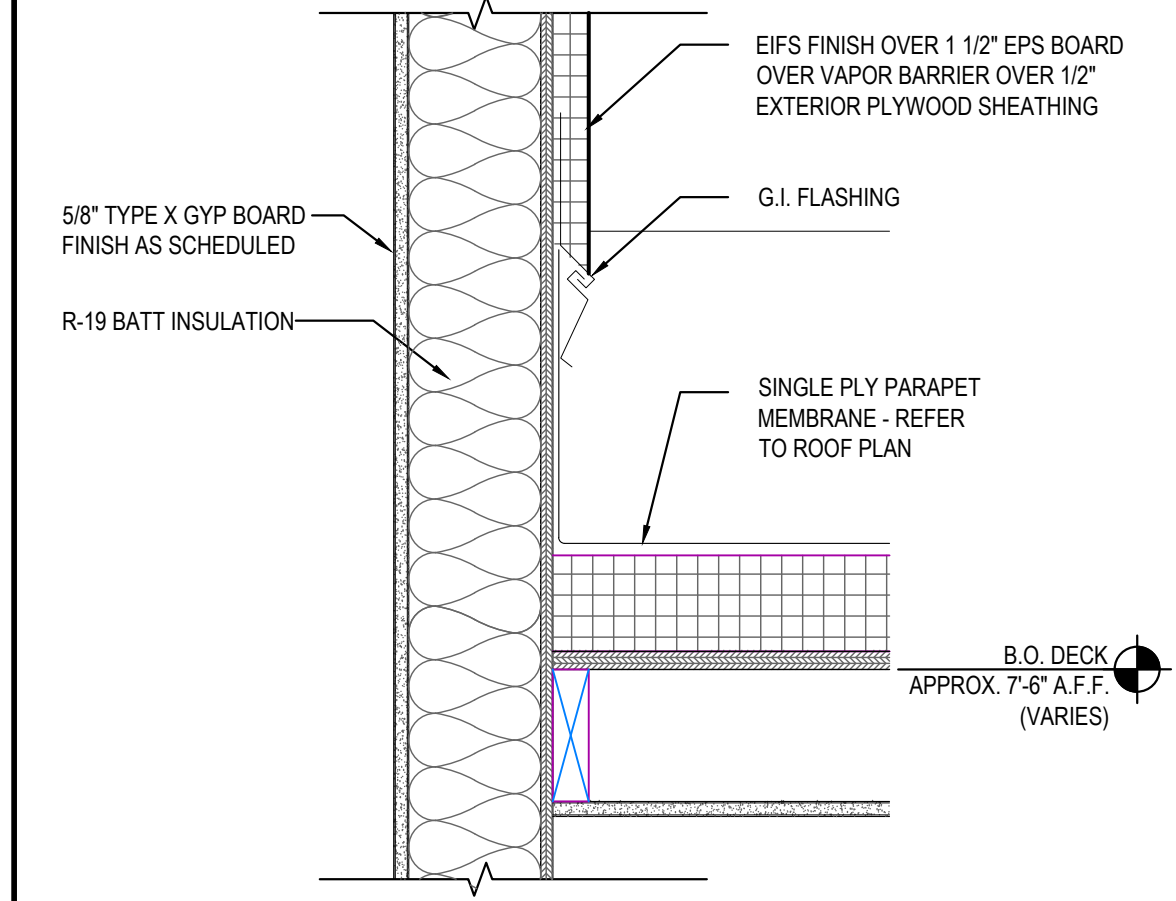
SNEEZE GUARD DETAIL 6

Scale= NTS A-402



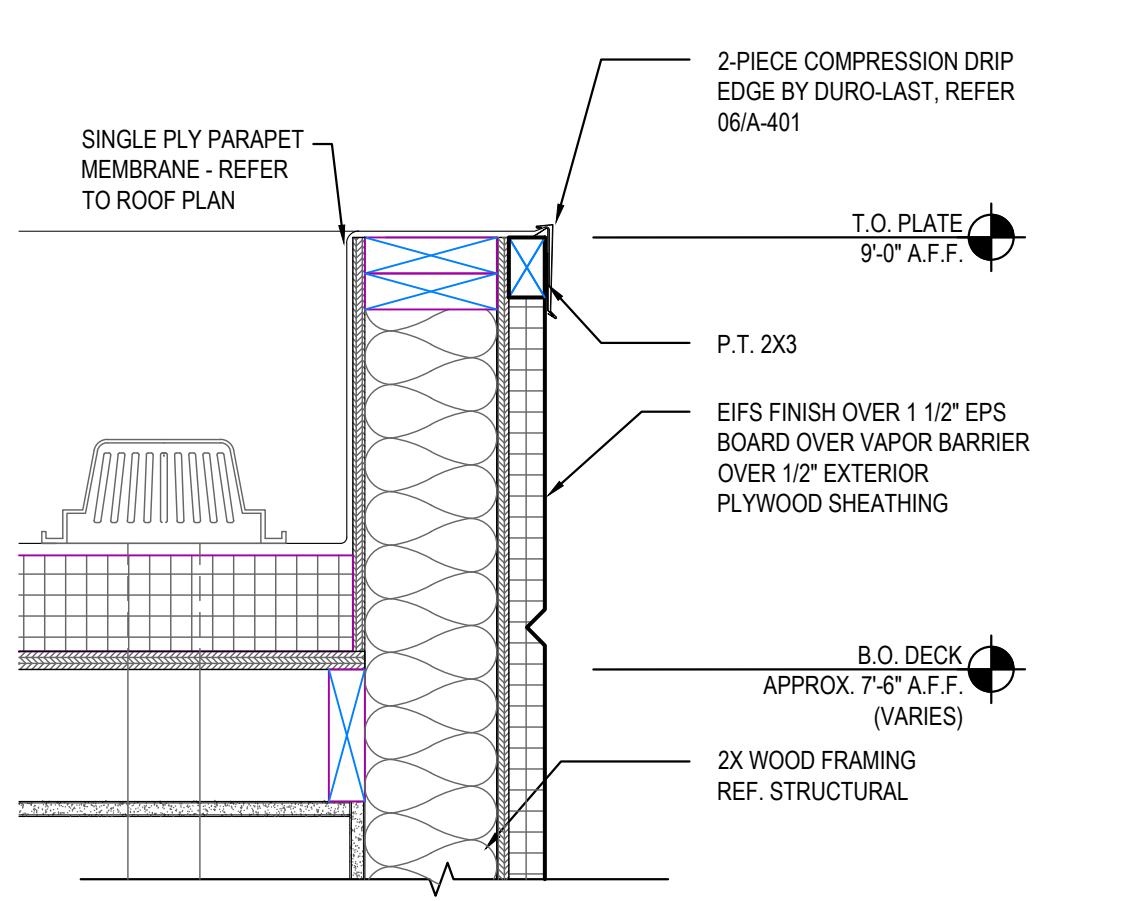
SNEEZE GUARD DETAIL 5

Scale= NTS A-402



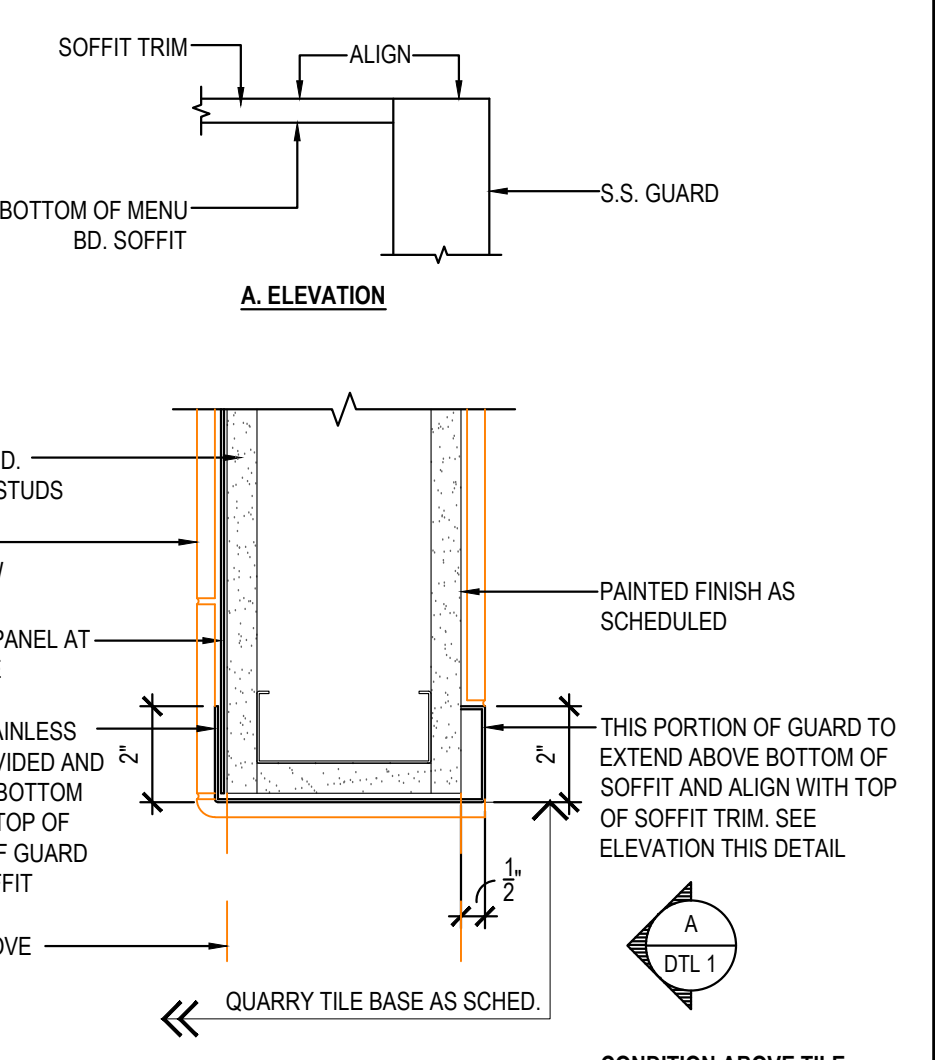
WALL DETAIL 4

Scale= 1 1/2" = 1'-0" A-402



PARAPET DETAIL 3

Scale= 1 1/2" = 1'-0" A-402



CORNER GUARD DETAIL 1

Scale= 3" = 1'-0" A-402



PANDA EXPRESS, INC.
1683 Walnut Grove Ave.
Rosemead, California
91770
Telephone: 626.799.9898
Facsimile: 626.372.8288

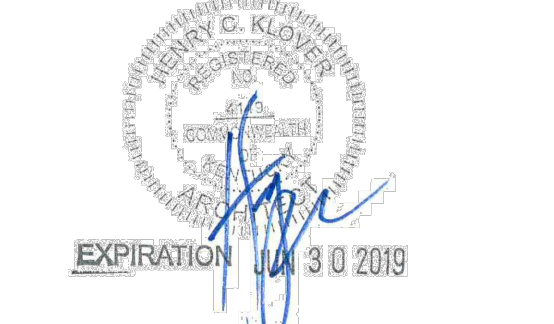
All ideas, designs, arrangement and plans indicated, or represented by this drawing are the property of Panda Express Inc. and were created for use on this specific project. None of these ideas, designs, arrangements or plans may be used by or disclosed to any person, firm, or corporation without the written permission of Panda Express Inc.

REVISIONS:

ISSUE DATE:
1st PERMIT SET 10-5-18
2nd BID SET 11-20-18

DRAWN BY:

PANDA PROJECT #: S8-19-D6462
ARCH PROJECT #: 18044.013



khckloverarchitect
10955 LOWELL AVENUE, SUITE 700
OVERLAND PARK, KS 66210
ph: 913.649.8181 • fx: 913.649.1275

PANDA EXPRESS
TRUE WARM & WELCOME 2200
Conestoga Pkwy & Historical Trail
Shepherdsville, KY, 40165

A-402

ARCHITECTURAL DETAILS

TRUE WARM & WELCOME 2200

BID SET 11.20.18