

HOOD INFORMATION - Job#3886824

HOOD NO.	TAG	MODEL	LENGTH	MAX. COOKING TEMP.	EXHAUST PLENUM RISER(S)								MUA CFM	AC CFM	HOOD CONSTRUCTION	HOOD CONFIG.	
					TOTAL EXH. CFM	WIDTH	LENG.	HEIGHT	DIA.	CFM	VEL.	S.P.				END TO END	ROW
1		4824 ND-2-ACPSP-F	10' 7.63"	600 Deg.	3150	12"	24'	4'		3150	1575	-0.518"	2520	472	430 SS Where Exposed	LEFT	ALONE
2		4824 ND-2-ACPSP-F	10' 7.63"	600 Deg.	3150	12"	24'	4'		3150	1575	-0.518"	2520	472	430 SS Where Exposed	RIGHT	ALONE

PATENT NUMBERS

AC-PSP (United States) - US Patent 7963830 B2
AC-PSP Wall (Canada) - CA Patent 2820509
AC-PSP Island (Canada) - CA Patent 2520330

HOOD INFORMATION

HOOD NO.	TAG	FILTER(S)					LIGHT(S)			UTILITY CABINET(S)					FIRE SYSTEM PIPING	HOOD HANGING WGT	
		TYPE	QTY.	HEIGHT	LENGTH	EFFICIENCY @ 7 MICRONS	QTY.	TYPE	WIRE GUARD	LOCATION	SIZE	FIRE SYSTEM		ELECTRICAL			SWITCHES
												TYPE	SIZE	MODEL #			QUANTITY
1		SS Baffle with Handles	7	20'	16'	30%	5	L55 Series E26	NO	Wall Mnt	12"x54"x24"	Ansul R102	3.0/3.0/3.0	SC-321110MA-SEP	1 Light 1 Fan	YES	554 LBS
2		SS Baffle with Handles	7	20'	16'	30%	5	L55 Series E26	NO	Right	20"x48"x24"					YES	644 LBS

HOOD OPTIONS

HOOD NO.	TAG	OPTION
1		LEFT END STANDOFF 3' Wide 48' Long

PERFORATED SUPPLY PLENUM(S)

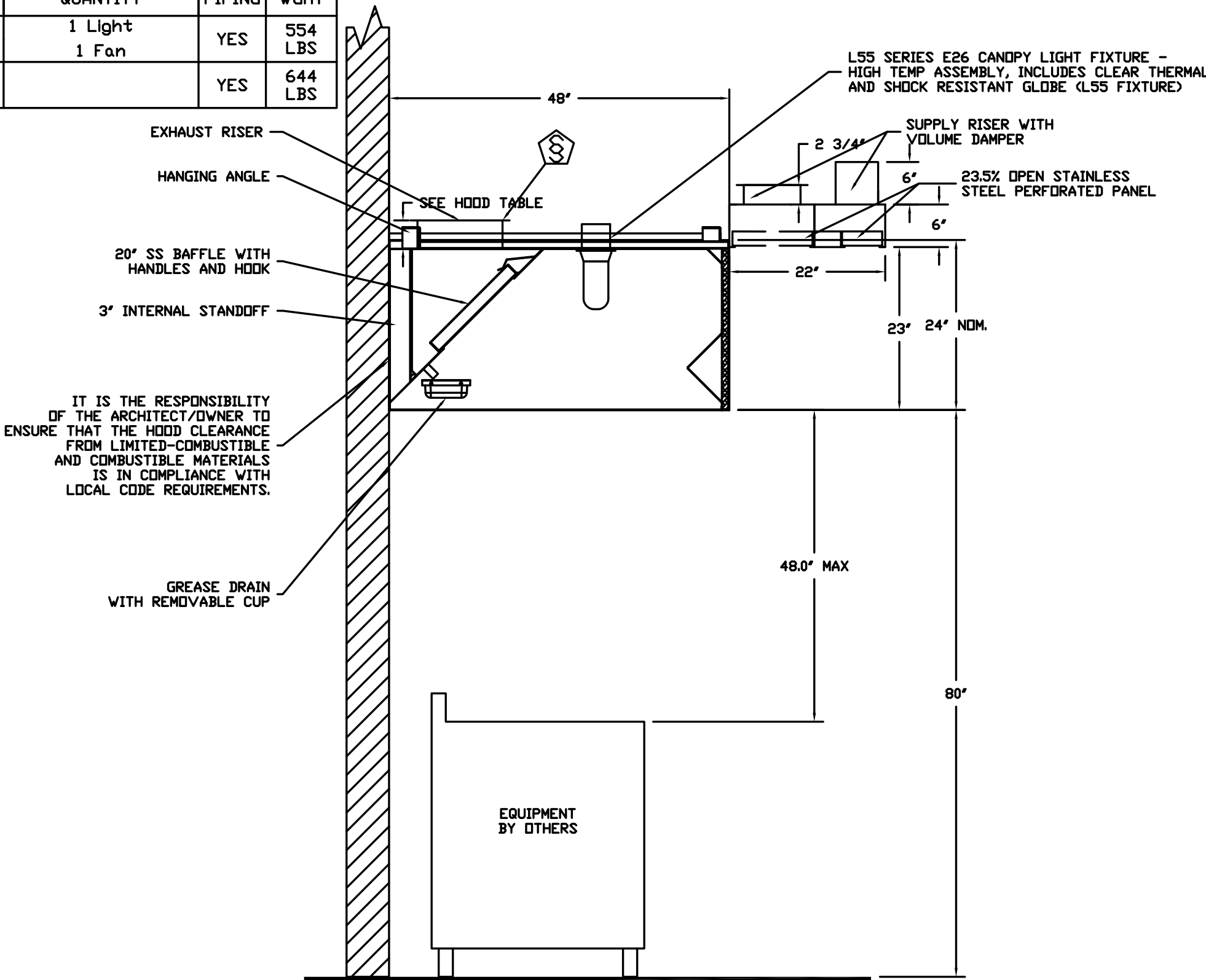
HOOD NO.	TAG	POS.	LENGTH	WIDTH	HEIGHT	TYPE	RISER(S)				
							WIDTH	LENG.	DIA.	CFM	S.P.
1		Front	130.63'	22'	6'	MUA	10"	28"		1260	0.586'
						MUA	10"	28"		1260	0.586'
						AC			8"	236	0.135'
						AC			8"	236	0.135'
2		Front	147.63'	22'	6'	MUA	10"	28"		1260	0.530'
						MUA	10"	28"		1260	0.530'
						AC			8"	236	0.135'
						AC			8"	236	0.135'

NOTE: UNLESS OTHERWISE STATED, PANDA RESTAURANT GROUP SHALL PROVIDE ALL EQUIPMENT ON THE FOLLOWING CAPTIVEAIRE SHEETS, INCLUDING: HOODS, FIRE SYTEM, EXHAUST FANS, SUPPLY FAN, BATHROOM FAN AND ELECTRICAL INTERLOCK PACKAGE

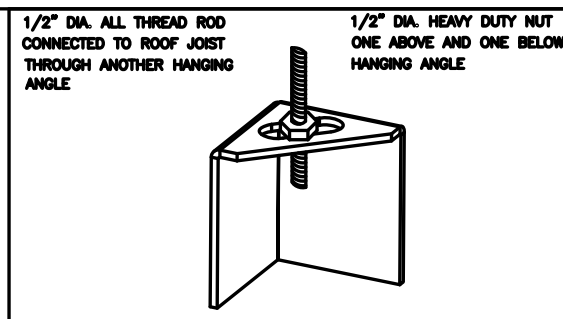
ANSUL GAS VALVE:

THE ANSUL GAS VALVE IS PROVIDED BY CAPTIVEAIRE SYSTEMS. CONTACT OUR OFFICE WITH THE VALVE SIZE 3 DAYS IN ADVANCE OF WHEN IT IS NEEDED ON SITE.

FOR QUESTIONS CALL THE CAPTIVEAIRE SOUTHERN CALIFORNIA OFFICE
STONE MILL DESIGN CENTER
2915 RED HILL AVE, SUITE C106
COSTA MESA, CA 92626
TEL: 800-967-7701 EMAIL: REG86@CAPTIVEAIRE.COM



SECTION VIEW - MODEL 4824ND-2-ACPSP-F
HOOD - #1, #2

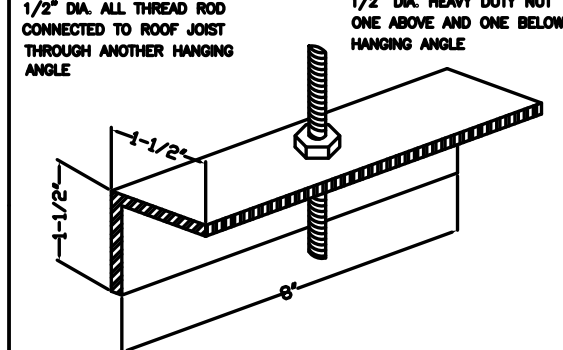


*HOOD AND NUTS TO BE SUPPLIED BY INSTALLING CONTRACTOR
HANGING ANGLE IS PRE-PUNCHED AT FACTORY

ND-2 HANGING ANGLE DETAIL

HOOD STYLE	DIM FROM REAR	DIM FROM FRONT (24" / 30" H)	DIM FROM LEFT / RIGHT (24" / 30" H)
ND-2			
EXHAUST ONLY	4.166"	2.248"	2.25"
WITH MUA	4.166"	2.248"	2.25"
EXHAUST ONLY	4.166"	2.248"	2.25"
WITH MUA	4.166"	2.248"	2.25"
CONDENSATE	2.248"	2.248"	2.25"

ND-2 HANGING ANGLE LOCATIONS

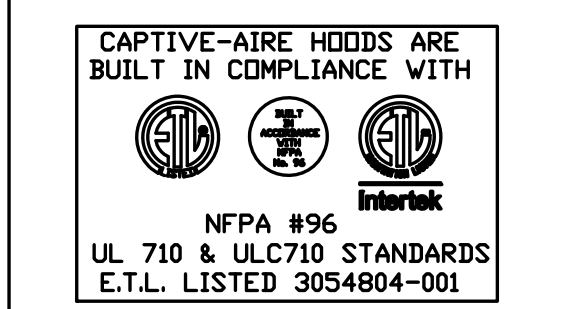


*HOOD AND NUTS TO BE SUPPLIED BY INSTALLING CONTRACTOR
HANGING ANGLE IS PRE-PUNCHED AT FACTORY

ND HANGING ANGLE DETAIL

HOOD STYLE	DIM FROM REAR	DIM FROM FRONT (24" / 30" H)	DIM FROM LEFT / RIGHT (24" / 30" H)
ND			
EXHAUST ONLY	5.00"	10.5" / 5"	5.00"
WITH MUA	5.00"	10.5" / 5"	5.00"

ND HANGING ANGLE LOCATIONS



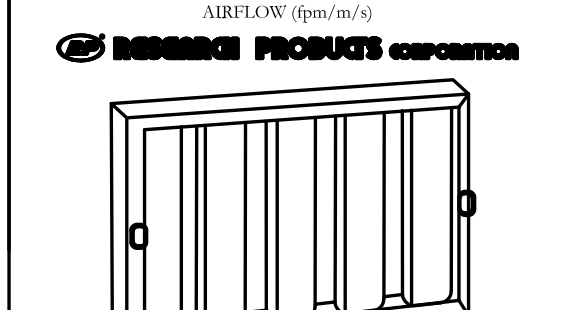
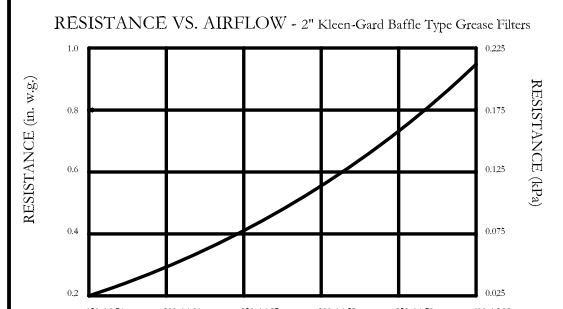
BUILDING CODES

CAPTIVE-AIRE HOODS HAVE OPTIONAL CLEARANCE REDUCTION SYSTEMS AVAILABLE AS FOLLOWS:	
MATERIAL	CLEARANCE REDUCTION SYSTEM
NON-COMBUSTIBLE	NONE REQUIRED
LIMITED-COMBUSTIBLE	3" UNINSULATED STANDOFF
COMBUSTIBLE	3" INSULATED STANDOFF

CLEARANCE TO COMBUSTIBLES

- GENERAL NOTES:
- ELECTRICAL WIRING TO GAS MOTOR CONTROLS (MOTOR STARTERS, FAN SWITCHES, FAN DISCONNECTS, RELAYS, ETC.) BY OTHERS.
 - FIRE CHASE BY OTHERS, IF REQUIRED.
 - ALL PHASES OF INSTALLATION SHALL COMPLY WITH NFPA 96.
 - WRITTEN MEASUREMENTS HAVE PRECEDENCE OVER SCALE.
 - PROVIDE CLEARANCES IN EXHAUST AIR DUCTS AS INDICATED TO ALLOW CLEANING.
 - EXHAUST DUCT TO BE 1/4" GA. GAN STEEL. ALL SEAMS AND JOINTS TO HAVE A LIQUID TIGHT CONTINUOUS EXTERNAL WELD.
 - FAN TO HAVE A MINIMUM OF 10 FT. OF CLEARANCE FROM THE DUCT TO ADJACENT BUILDINGS, PROPERTY LINES, AIR INTAKES OR 3 FT. VERTICAL CLEARANCE TO NEARBY ROOFS.
 - HORIZONTAL EXHAUST DUCT TO SLOPE, NOT LESS THAN 1/4" PER FOOT TOWARD HOOD FOR DUCT LESS THAN 75' LONG.
 - 1" FOR EACH FOOT FOR DUCT LONGER THAN 75' ON OPEN SIDE.
 - HOOD TO OVERHANG COOKING EQUIPMENT 6".
 - EXHAUST DUCT TO BE PROTECTED FROM COMBUSTIBLES PER NFPA96 AND LOCAL CODE.
 - BUILDING PRESSURE SHALL NOT EXCEED 0.05" WATER COLUMN AT EXTERIOR DOORS.
 - KITCHEN SHALL BE BALANCED TO BE NEGATIVE WITH RESPECT TO THE DINING ROOM.

GENERAL NOTES



Kleen-Gard Baffle-Type Filters are UL Classified Grease Extracting Filters. MEA # 168-78-M Aluminum MEA # 247-96-E Stainless Steel

FILTER DETAIL

REVISIONS	
DESCRIPTION	DATE

*HOOD AND NUTS TO BE SUPPLIED BY INSTALLING CONTRACTOR
HANGING ANGLE IS PRE-PUNCHED AT FACTORY

ND-2 HANGING ANGLE DETAIL

HOOD STYLE	DIM FROM REAR	DIM FROM FRONT (24" / 30" H)	DIM FROM LEFT / RIGHT (24" / 30" H)
ND-2			
EXHAUST ONLY	4.166"	2.248"	2.25"
WITH MUA	4.166"	2.248"	2.25"
EXHAUST ONLY	4.166"	2.248"	2.25"
WITH MUA	4.166"	2.248"	2.25"
CONDENSATE	2.248"	2.248"	2.25"

ND-2 HANGING ANGLE LOCATIONS



*HOOD AND NUTS TO BE SUPPLIED BY INSTALLING CONTRACTOR
HANGING ANGLE IS PRE-PUNCHED AT FACTORY

ND HANGING ANGLE DETAIL

HOOD STYLE	DIM FROM REAR	DIM FROM FRONT (24" / 30" H)	DIM FROM LEFT / RIGHT (24" / 30" H)
ND			
EXHAUST ONLY	5.00"	10.5" / 5"	5.00"
WITH MUA	5.00"	10.5" / 5"	5.00"

ND HANGING ANGLE LOCATIONS



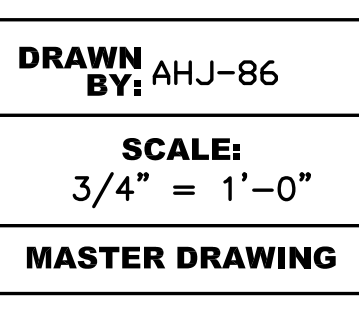
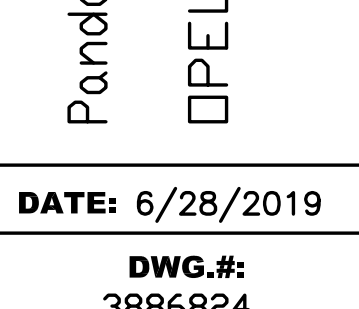
BUILDING CODES

CAPTIVE-AIRE HOODS HAVE OPTIONAL CLEARANCE REDUCTION SYSTEMS AVAILABLE AS FOLLOWS:	
MATERIAL	CLEARANCE REDUCTION SYSTEM
NON-COMBUSTIBLE	NONE REQUIRED
LIMITED-COMBUSTIBLE	3" UNINSULATED STANDOFF
COMBUSTIBLE	3" INSULATED STANDOFF

CLEARANCE TO COMBUSTIBLES

- GENERAL NOTES:
- ELECTRICAL WIRING TO GAS MOTOR CONTROLS (MOTOR STARTERS, FAN SWITCHES, FAN DISCONNECTS, RELAYS, ETC.) BY OTHERS.
 - FIRE CHASE BY OTHERS, IF REQUIRED.
 - ALL PHASES OF INSTALLATION SHALL COMPLY WITH NFPA 96.
 - WRITTEN MEASUREMENTS HAVE PRECEDENCE OVER SCALE.
 - PROVIDE CLEARANCES IN EXHAUST AIR DUCTS AS INDICATED TO ALLOW CLEANING.
 - EXHAUST DUCT TO BE 1/4" GA. GAN STEEL. ALL SEAMS AND JOINTS TO HAVE A LIQUID TIGHT CONTINUOUS EXTERNAL WELD.
 - FAN TO HAVE A MINIMUM OF 10 FT. OF CLEARANCE FROM THE DUCT TO ADJACENT BUILDINGS, PROPERTY LINES, AIR INTAKES OR 3 FT. VERTICAL CLEARANCE TO NEARBY ROOFS.
 - HORIZONTAL EXHAUST DUCT TO SLOPE, NOT LESS THAN 1/4" PER FOOT TOWARD HOOD FOR DUCT LESS THAN 75' LONG.
 - 1" FOR EACH FOOT FOR DUCT LONGER THAN 75' ON OPEN SIDE.
 - HOOD TO OVERHANG COOKING EQUIPMENT 6".
 - EXHAUST DUCT TO BE PROTECTED FROM COMBUSTIBLES PER NFPA96 AND LOCAL CODE.
 - BUILDING PRESSURE SHALL NOT EXCEED 0.05" WATER COLUMN AT EXTERIOR DOORS.
 - KITCHEN SHALL BE BALANCED TO BE NEGATIVE WITH RESPECT TO THE DINING ROOM.

GENERAL NOTES



Kleen-Gard Baffle-Type Filters are UL Classified Grease Extracting Filters. MEA # 168-78-M Aluminum MEA # 247-96-E Stainless Steel

FILTER DETAIL

SHEET NO. 1

DATE: 6/28/2019

DWG.#: 3886824

DRAWN BY: AHJ-86

SCALE: 3/4" = 1'-0"

MASTER DRAWING

SHEET NO. 1

DATE: 6/28/2019

DWG.#: 3886824

DRAWN BY: AHJ-86

SCALE: 3/4" = 1'-0"

MASTER DRAWING

SHEET NO. 1

DATE: 6/28/2019

DWG.#: 3886824

DRAWN BY: AHJ-86

SCALE: 3/4" = 1'-0"

MASTER DRAWING

SHEET NO. 1

DATE: 6/28/2019

DWG.#: 3886824

DRAWN BY: AHJ-86

SCALE: 3/4" = 1'-0"

MASTER DRAWING

SHEET NO. 1

DATE: 6/28/2019

DWG.#: 3886824

DRAWN BY: AHJ-86

SCALE: 3/4" = 1'-0"

MASTER DRAWING

SHEET NO. 1

DATE: 6/28/2019

DWG.#: 3886824

DRAWN BY: AHJ-86

SCALE: 3/4" = 1'-0"

MASTER DRAWING

SHEET NO. 1

DATE: 6/28/2019

DWG.#: 3886824

DRAWN BY: AHJ-86

SCALE: 3/4" = 1'-0"

MASTER DRAWING

SHEET NO. 1

DATE: 6/28/2019

DWG.#: 3886824

DRAWN BY: AHJ-86

SCALE: 3/4" = 1'-0"

MASTER DRAWING

SHEET NO. 1

DATE: 6/28/2019

DWG.#: 3886824

DRAWN BY: AHJ-86

SCALE: 3/4" = 1'-0"

MASTER DRAWING

SHEET NO. 1

DATE: 6/28/2019

DWG.#: 3886824

DRAWN BY: AHJ-86

SCALE: 3/4" = 1'-0"

MASTER DRAWING

SHEET NO. 1

DATE: 6/28/2019

DWG.#: 3886824

DRAWN BY: AHJ-86

SCALE: 3/4" = 1'-0"

MASTER DRAWING

SHEET NO. 1

DATE: 6/28/2019

DWG.#: 3886824

DRAWN BY: AHJ-86

SCALE: 3/4" = 1'-0"

MASTER DRAWING

SHEET NO. 1

DATE: 6/28/2019

DWG.#: 3886824

DRAWN BY: AHJ-86

SCALE: 3/4" = 1'-0"

MASTER DRAWING

SHEET NO. 1

DATE: 6/28/2019

DWG.#: 3886824

DRAWN BY: AHJ-86

SCALE: 3/4" = 1'-0"

MASTER DRAWING

SHEET NO. 1

DATE: 6/28/2019

DWG.#: 3886824

DRAWN BY: AHJ-86

SCALE: 3/4" = 1'-0"

MASTER DRAWING

SHEET NO. 1

DATE: 6/28/2019

DWG.#: 3886824

DRAWN BY: AHJ-86

SCALE: 3/4" = 1'-0"

MASTER DRAWING

SHEET NO. 1

DATE: 6/28/2019

DWG.#: 3886824

DRAWN BY: AHJ-86

SCALE: 3/4" = 1'-0"

MASTER DRAWING

SHEET NO. 1

DATE: 6/28/2019

DWG.#: 3886824

DRAWN BY: AHJ-86

SCALE: 3/