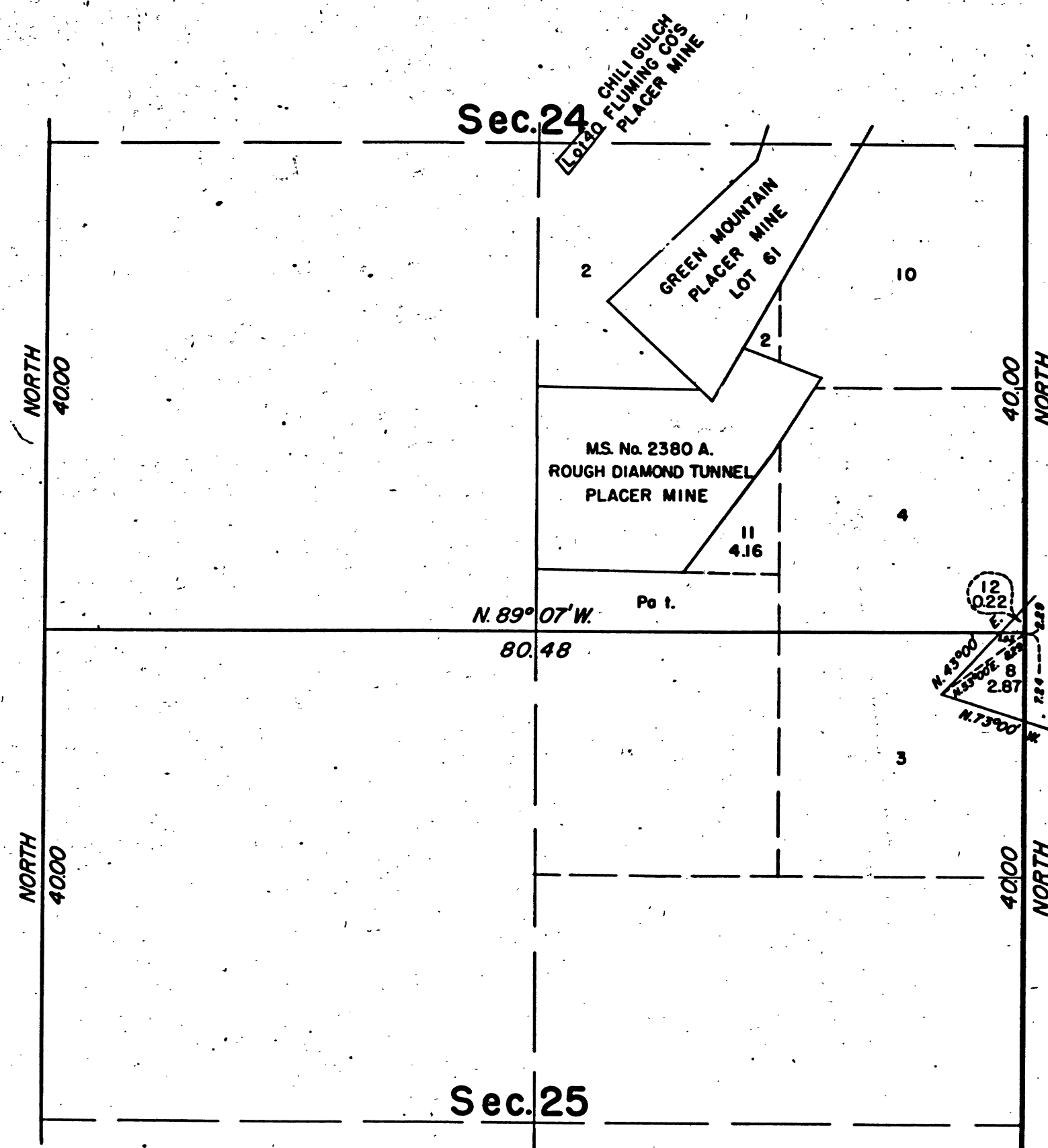


TOWNSHIP 5 NORTH, RANGE 11 EAST, OF THE MOUNT DIABLO MERIDIAN, CALIFORNIA.
SUPPLEMENTAL PLAT



This plat showing an amended lotting for the residual unpatented portion of original lot 9, sec. 24 and amended lottings resulting from the elimination of Mineral Lot 60 in secs. 24 and 25, T. 5 N., R. 11 E., Mount Diablo Meridian, California, is based upon the township plat approved January 18, 1871, Supplemental Plats approved November 12, 1919, September 7, 1921, and the plat accepted April 22, 1930, and the plats dated August 21, 1873, November 26, 1875, October 3, 1876, September 8, 1881, December 24, 1885, and February 4, 1890.



UNITED STATES DEPARTMENT OF THE INTERIOR
BUREAU OF LAND MANAGEMENT
Washington, D.C. October 25, 1960

This plat, showing an amended lotting, is based upon the official records, and having been correctly prepared in accordance with the regulations, is hereby accepted.

For the Director

Cadastral Engineering Staff Officer

C.A.H.

41424-B

T. 5 N., R. 11 E., MDM

BLM 239

