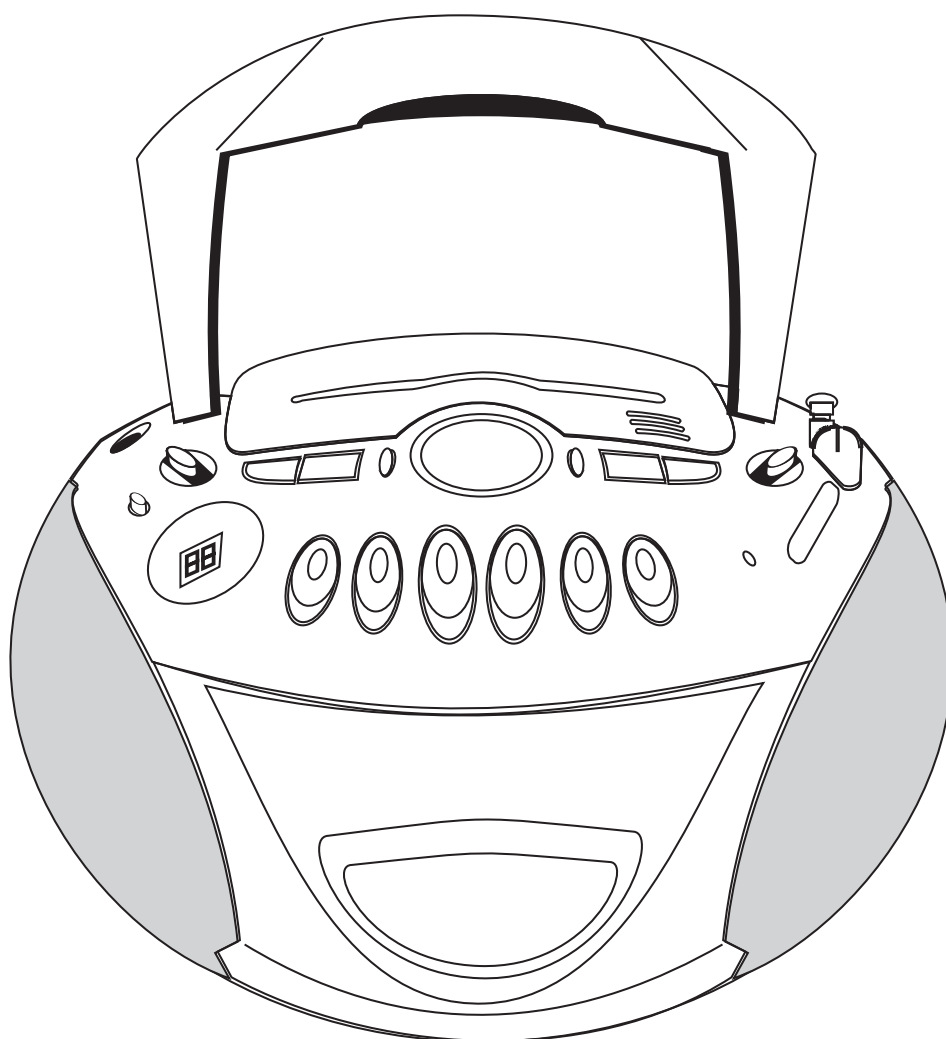


DAEWOO



PORTABLE RADIO CASSETTE RECORDER WITH CD PLAYER

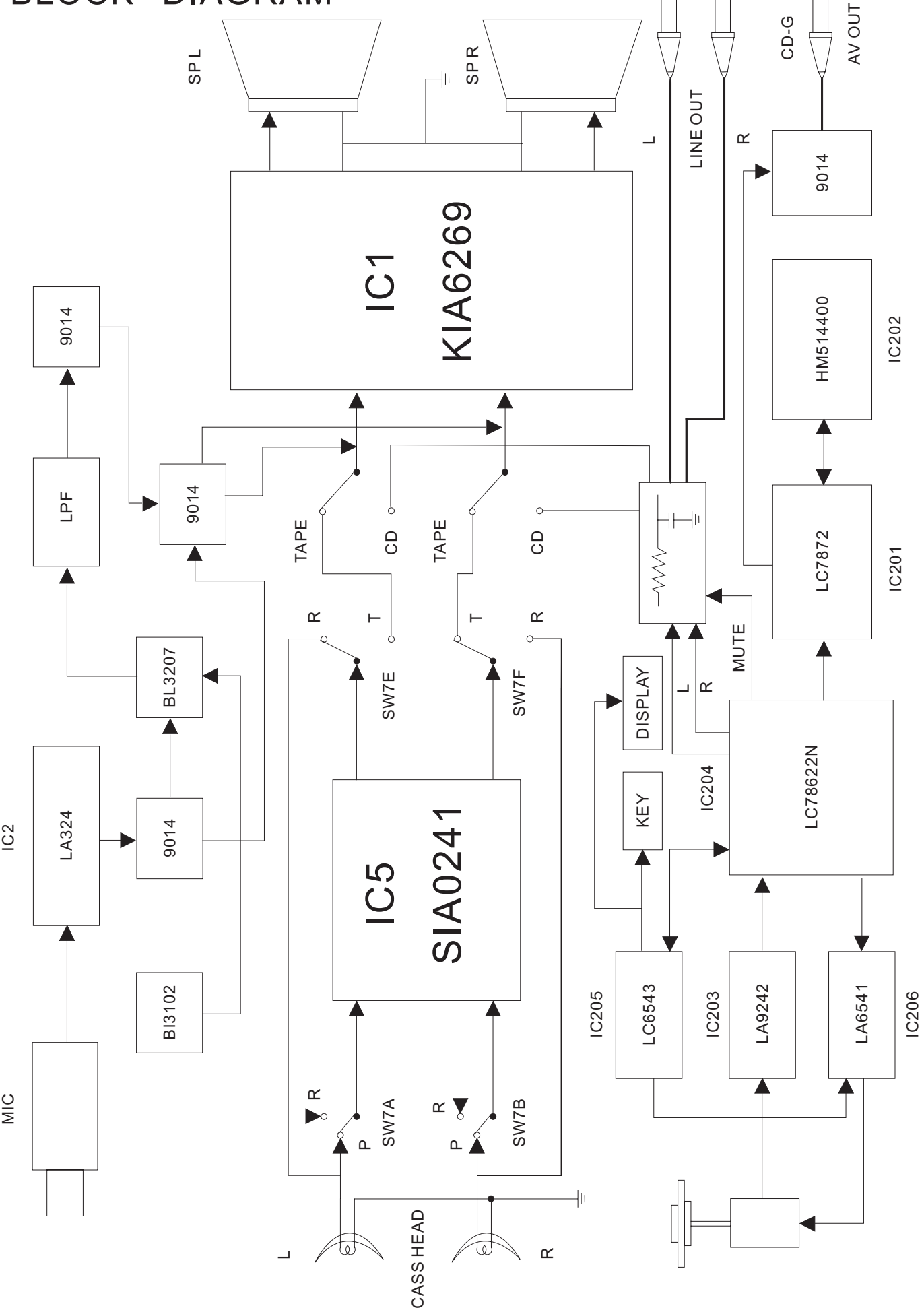
SW-351

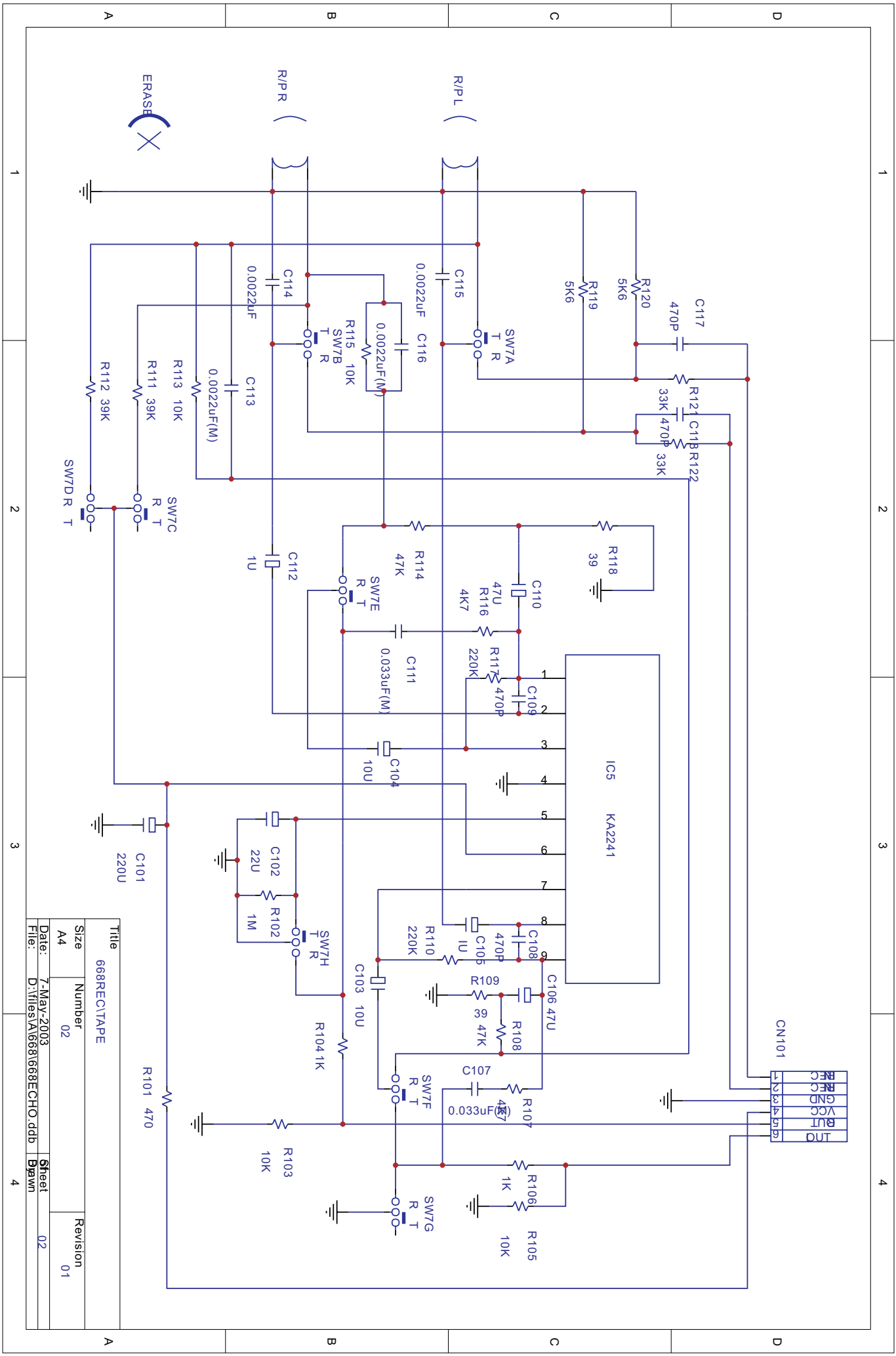


SERVICE MANUAL

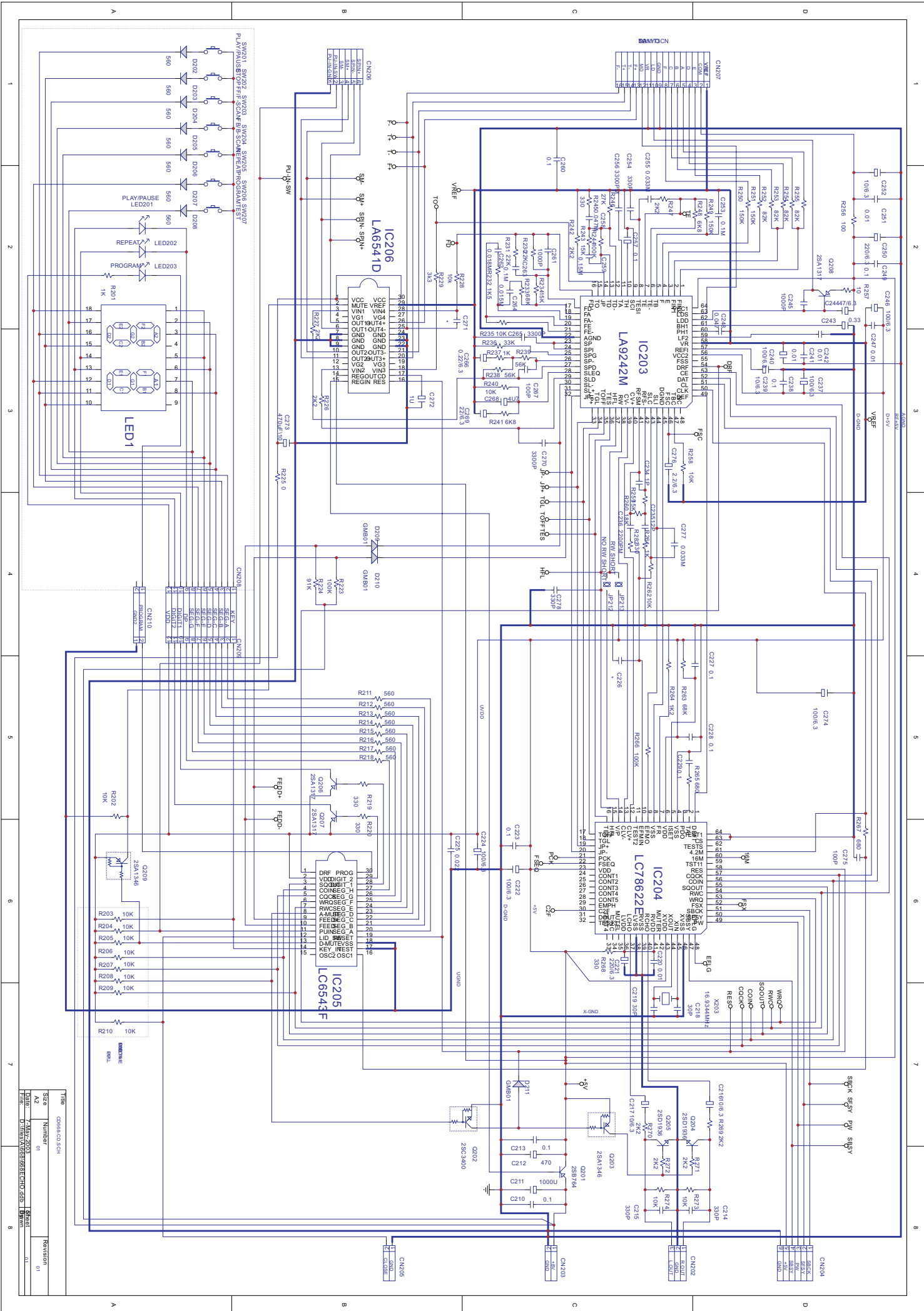
<u>Page</u>	<u>Description</u>
Cover	
1	Directory
2	Block diagram
3	Circuit diagram - Audio / Tuner
4	Circuit diagram - Tape
5	Circuit diagram - CD Servo
6	Circuit diagram - Micom controller
7	PCB - Keyboard / CD Servo
8	PCB Layout - Keyboard / CD Servo
9	PCB - Audio / Tuner
10	PCB Layout - Audio / Tuner
11	PCB - Tape
12	PCB Layout - Tape
13	Wiring diagram
14	Voltage table - Transistors and IC's
15	Exploded view diagram
16	Bill of material - 1
17	Bill of material - 2
18	Bill of material - 3
19	Bill of material - 4
20	Bill of material - 5
21	Bill of material - 6
22	Bill of material - 7
23	Bill of material - 8

BLOCK DIAGRAM

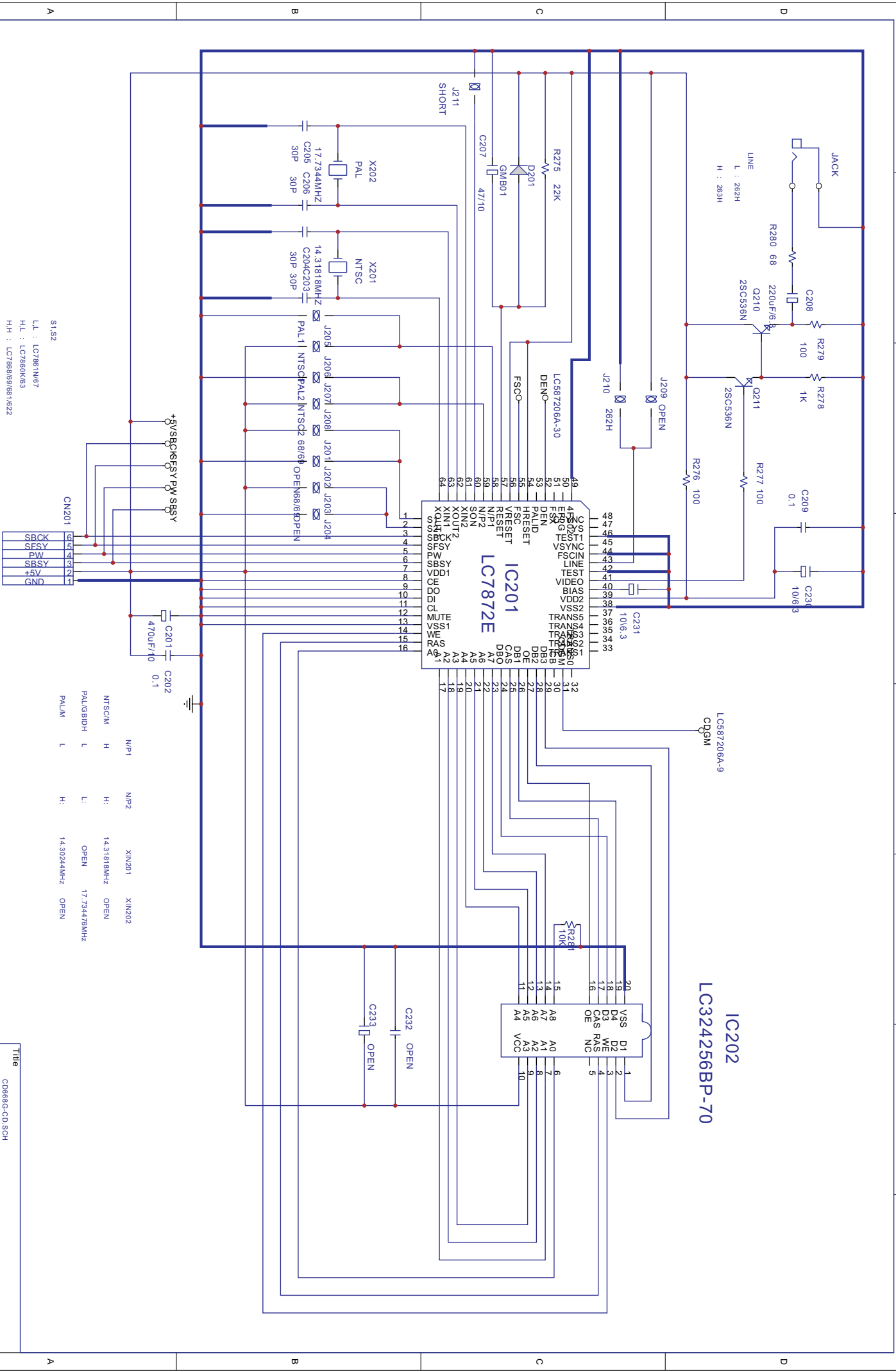




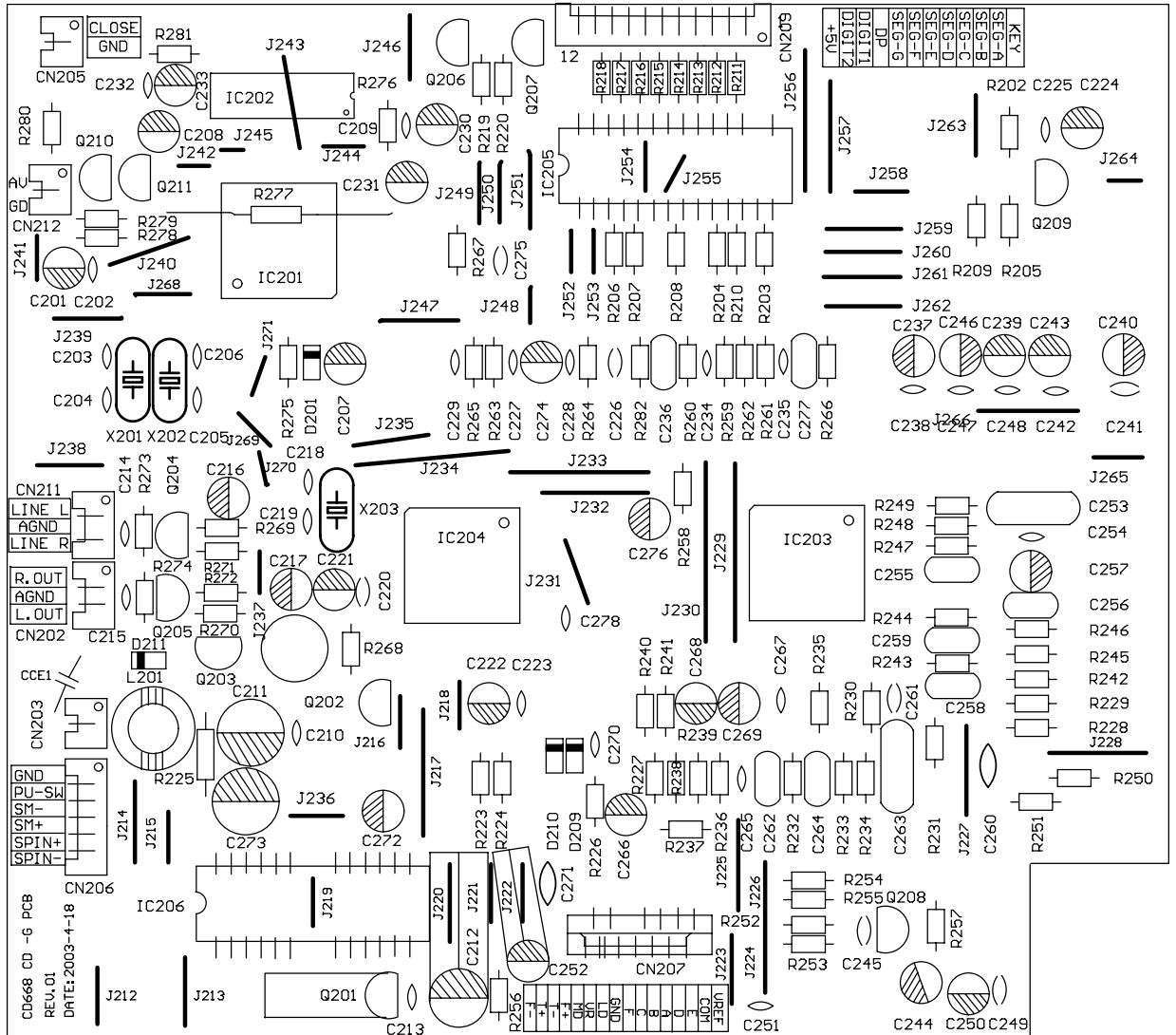
Title		668REC1TAPE	
Size	Number	Revision	
A4	02	01	
Date:	7-May-2003	Sheet	02
File:	D:\files\A\668\668ECHO.ddb	Drawn	

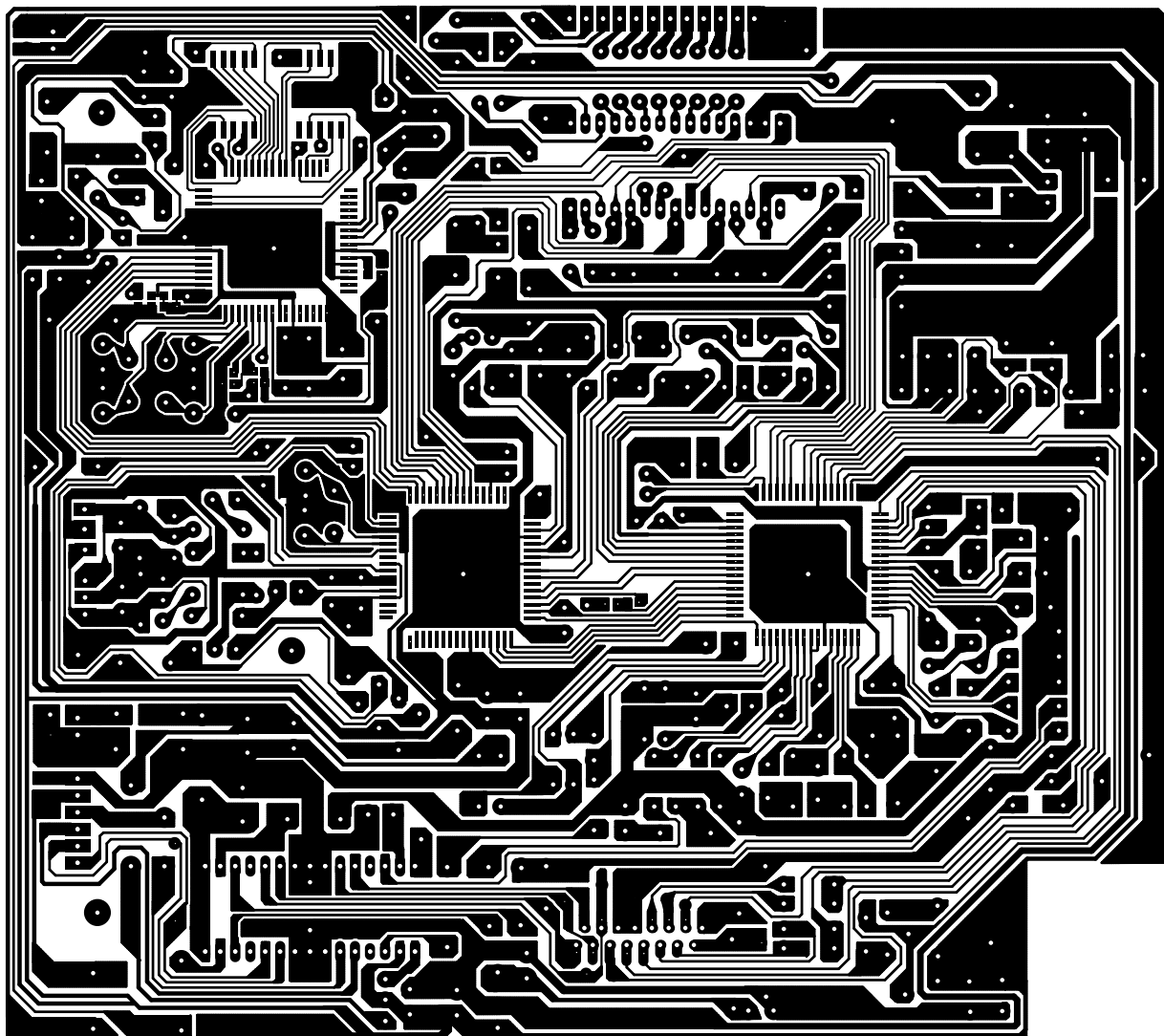
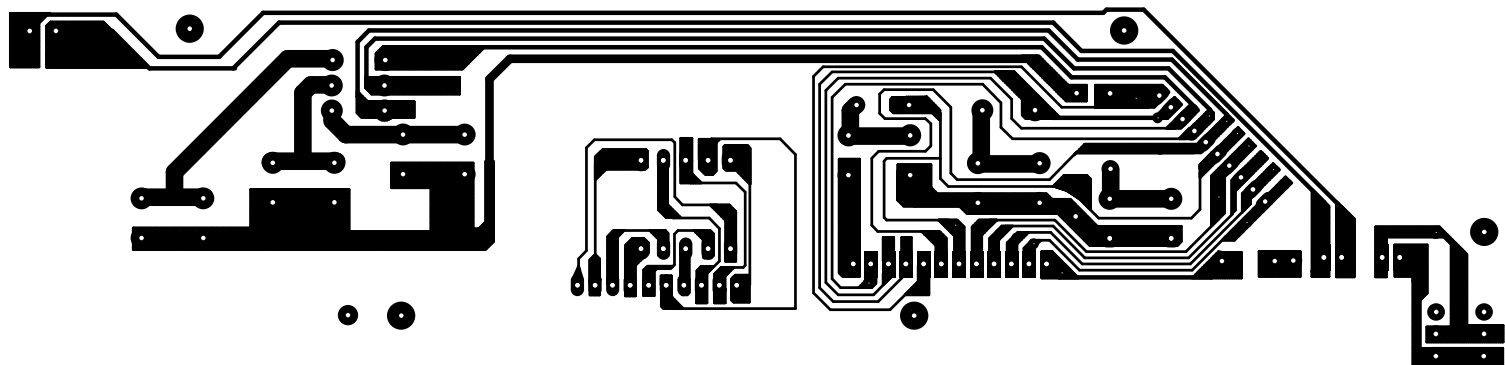


Title			CD666-CD SCH	
Size	Number	Revision		
A2	01	01		
Date:	7-MAY-2003	Sheet		
File:	D:\chem\1\666\666SCH.dcd	BWm	01	

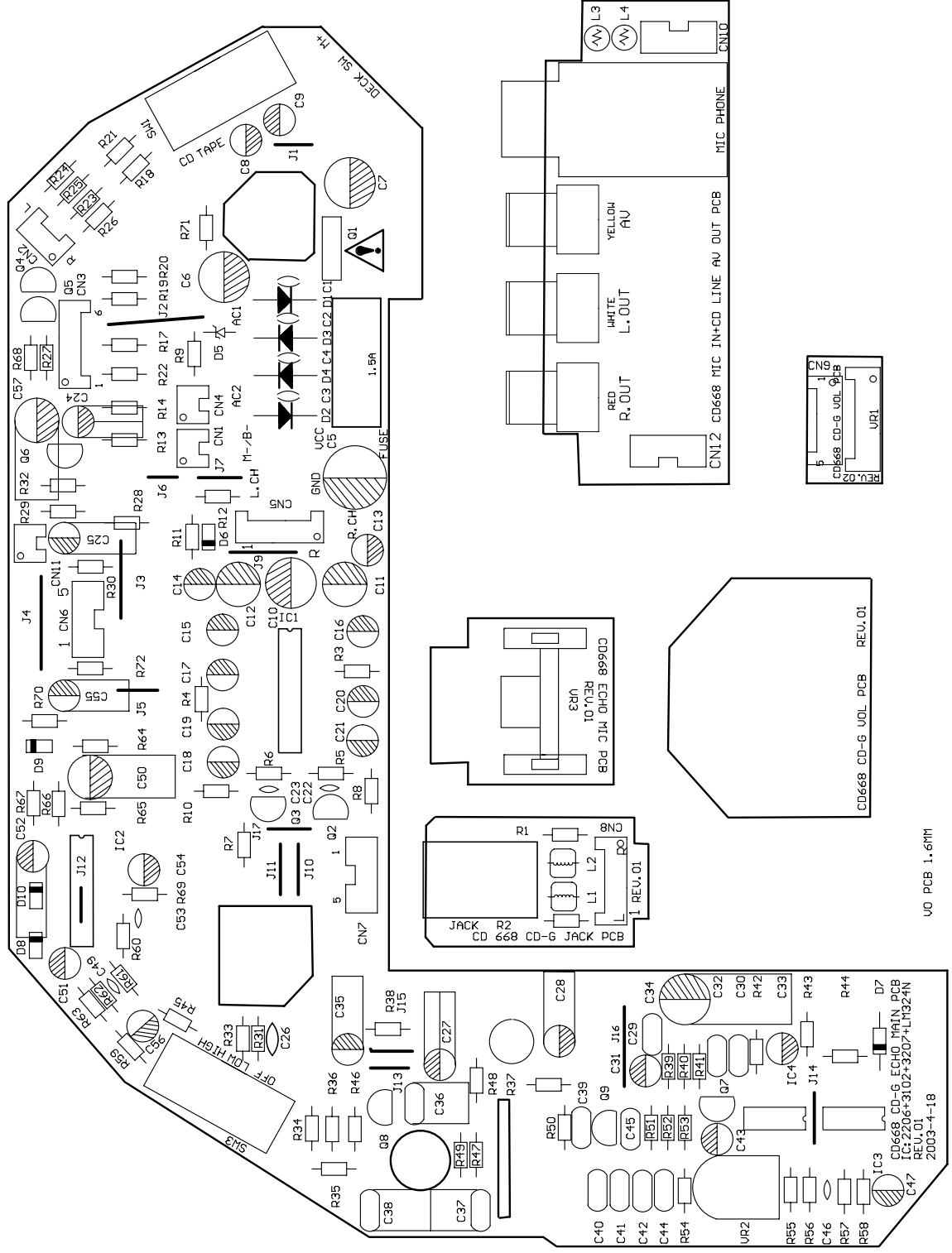


CD668 CD-G KEY PCB
REV.01
DATE:2003-4-18

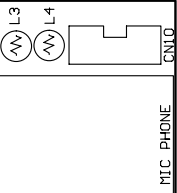
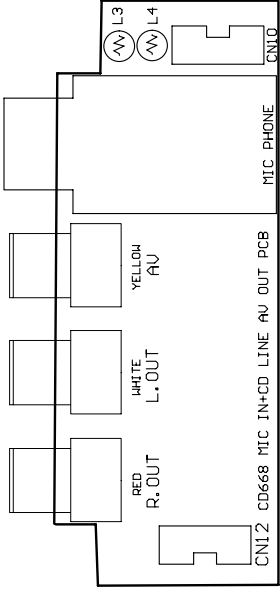
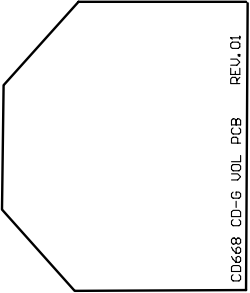
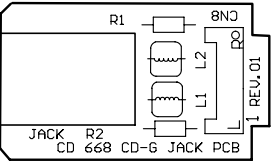
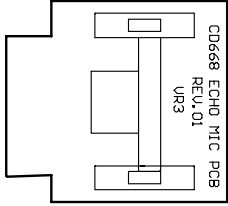
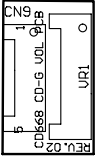


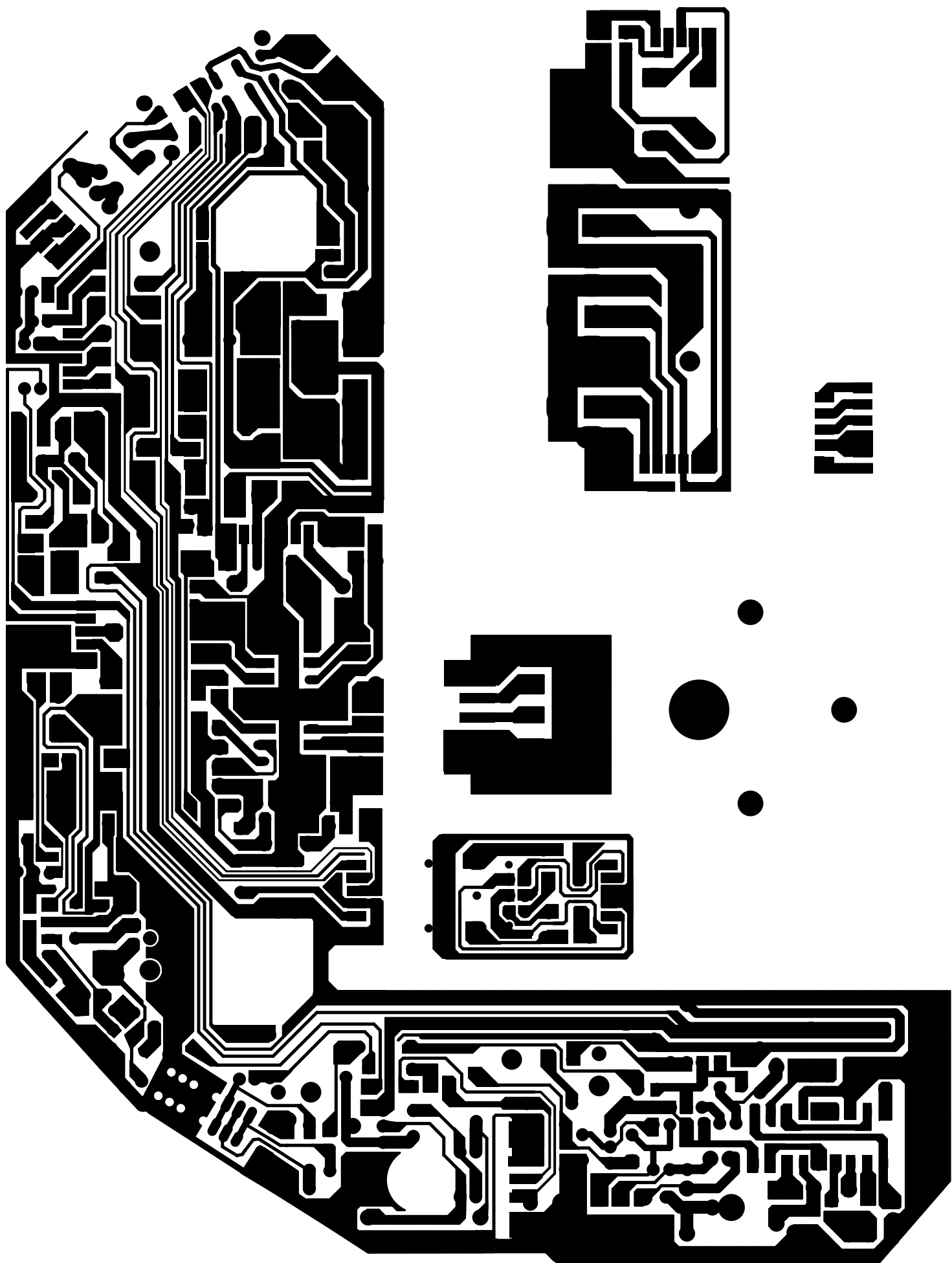


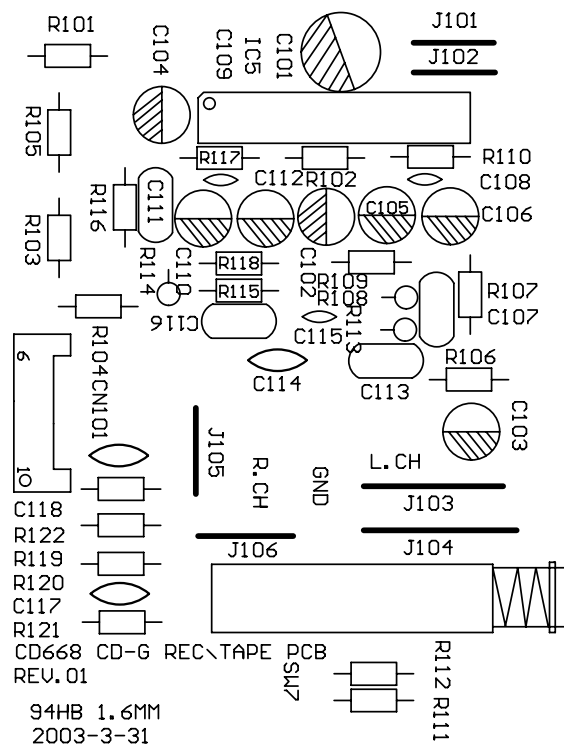
1.6MM UO PCB

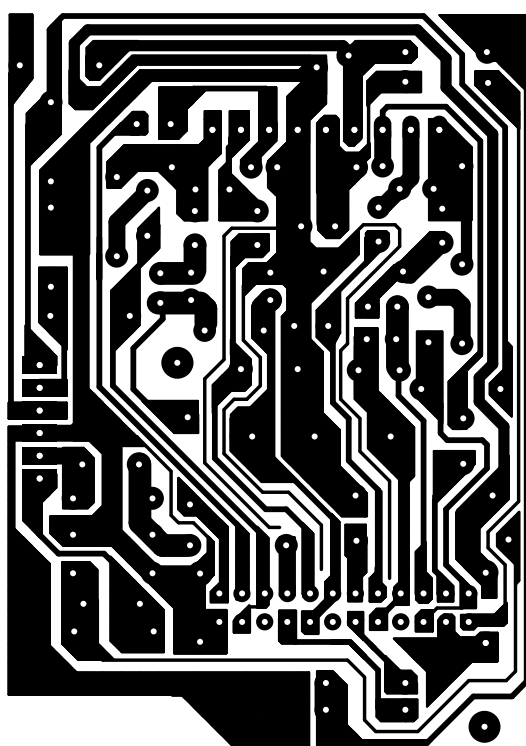


UO PCB 1.6MM

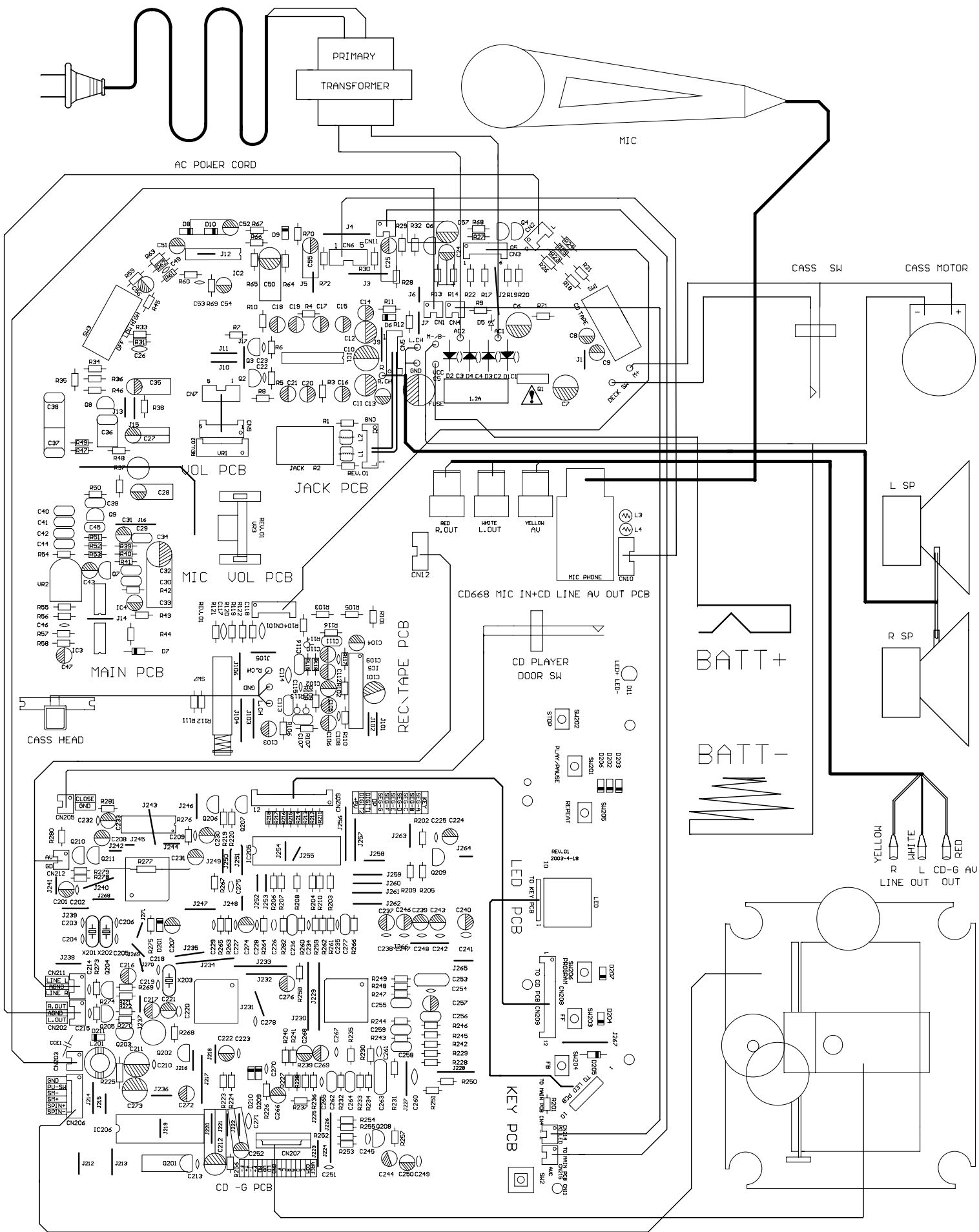








WIRING DIAGRAM



CD-68 TRANSISTOR . REG-IC . REG VOLTAGE (V)

Q1 (UTC7808)

PIN	1	2	3
WORK VOLT		0	8

Q7 (9014C)

PIN	E	B	C
DRAWING VOLTAGE	3	3.5	7

Q2 ;Q3 (9014)

PIN	E	B	C
NONER VOLTAGE	0	0	0
DRAWING VOLTAGE	0	0.5	0

Q8 (9014C)

PIN	E	B	C
DRAWING VOLTAGE	3	3.5	7

Q202(3400)

PIN	E	B	C
NONER VOLTAGE	0	0	4.8
DRAWING VOLTAGE	0	4	0

Q203(1346)

PIN	E	B	C
NONER VOLTAGE	4.9	4.8	0.3
DRAWING VOLTAGE	4.9	0	4.8

Q210(9014)

PIN	E	B	C
DRAWING VOLTAGE	2.3	3.0	4.9

Q211(9014)

PIN	E	B	C
DRAWING VOLTAGE	1.6	2.3	4.9

Q4;Q5(9014)

PIN	E	B	C
NONER VOLTAGE	0	0	0
DRAWING VOLTAGE	0	0.5	0

Q9 (9014C)

PIN	E	B	C
DRAWING VOLTAGE	3.6	4.2	7

Q204;205C1936

PIN	E	B	C
NONER VOLTAGE	0	0.3	0
DRAWING VOLTAGE	0	0.7	0

Q213(B764)

PIN	E	B	C
DRAWING VOLTAGE	7.8	7.2	5.0

Q6 (9014C)

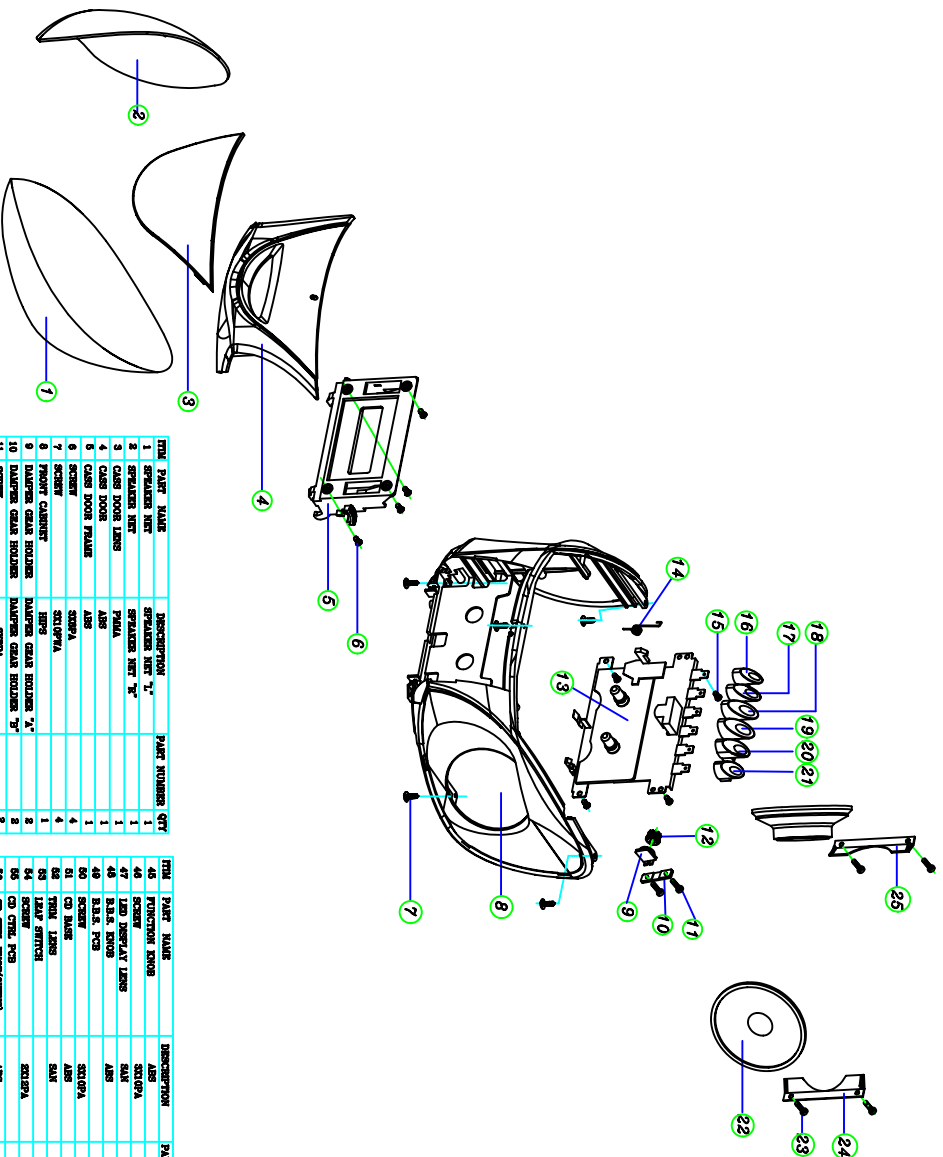
PIN	E	B	C
	0.76	1.3	3.6

Q206;207(9015)

PIN	E	B	C
DRAWING VOLTAGE	5	4.5	2.9

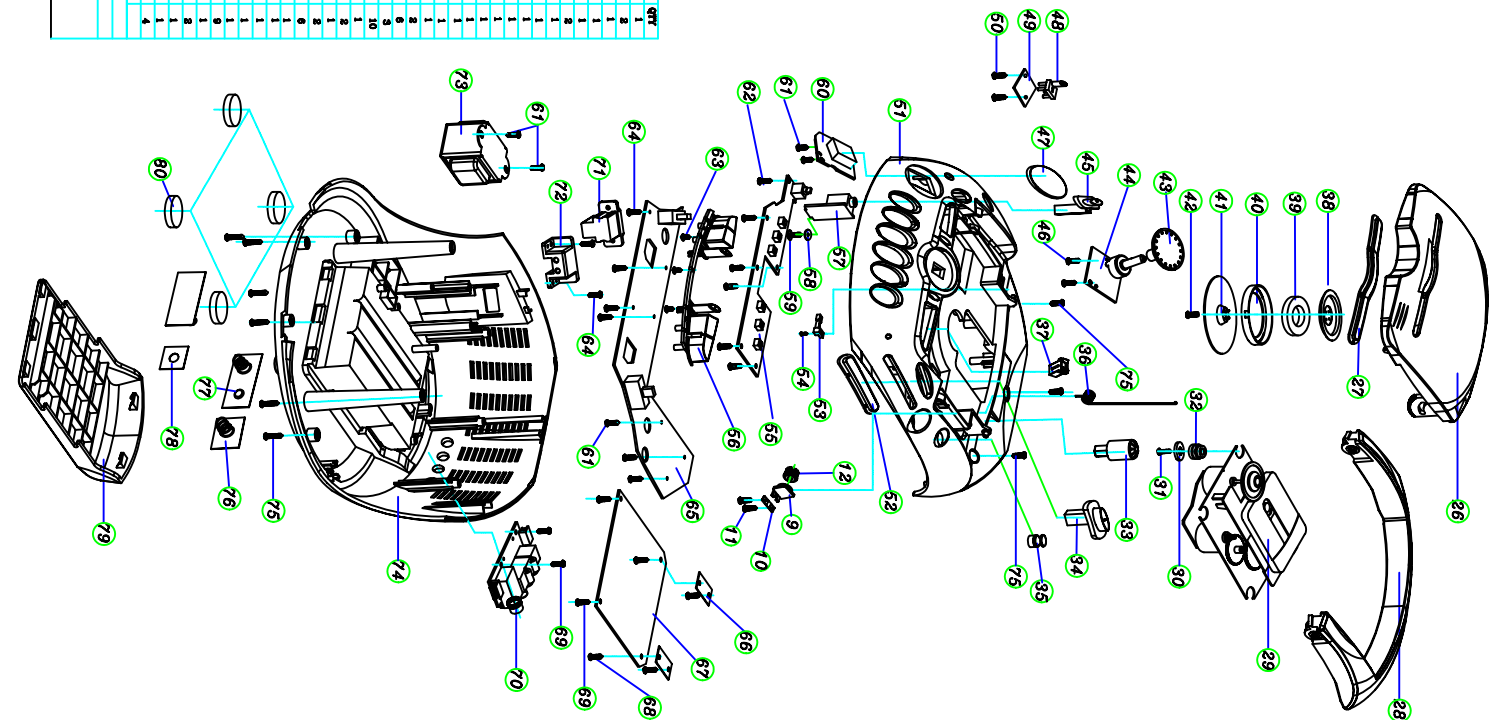
Q208 (9015)

PIN	E	B	C
DRAWING VOLTAGE	1.6	2.3	4.9



ITEM	PART NAME	DESCRIPTION	PART NUMBER	QTY
1	SPEAKERS NET	SPEAKERS NET "L"		1
2	SPEAKERS NET	SPEAKERS NET "R"		1
3	CAS DOOR LENS	PMMA		1
4	CAS DOOR LENS	ABS		1
5	CAS DOOR PLATE	ABS		1
6	SCREW	ST/PMMA		4
7	SCREW	HPPS		4
8	SCREW	HPPS		4
9	SCREW	HPPS		4
10	DIAPHR. GEAR HOLDER	DIAPHR. GEAR HOLDER "L"		2
11	DIAPHR. GEAR HOLDER	DIAPHR. GEAR HOLDER "R"		2
12	DIAPHR. GEAR	PMMA		2
13	DIAPHR. GEAR	PMMA		2
14	CAS DOOR LENS	ABS		1
15	SCREW	ST/PMMA		2
16	CAS DOOR LENS	CAS DOOR LENS (PMMA)		1
17	CAS DOOR LENS	CAS DOOR LENS (ABS)		1
18	CAS DOOR LENS	CAS DOOR LENS (PMMA)		1
19	CAS DOOR LENS	CAS DOOR LENS (ABS)		1
20	CAS DOOR LENS	CAS DOOR LENS (PMMA)		1
21	CAS DOOR LENS	CAS DOOR LENS (ABS)		1
22	SCREW	ST/PMMA		2
23	SCREW	ST/PMMA		2
24	SCREW	ST/PMMA		2
25	SCREW	ST/PMMA		2
26	SCREW	ST/PMMA		2
27	SCREW	ST/PMMA		2
28	SCREW	ST/PMMA		2
29	SCREW	ST/PMMA		2
30	SCREW	ST/PMMA		2
31	SCREW	ST/PMMA		2
32	SCREW	ST/PMMA		2
33	SCREW	ST/PMMA		2
34	SCREW	ST/PMMA		2
35	SCREW	ST/PMMA		2
36	SCREW	ST/PMMA		2
37	SCREW	ST/PMMA		2
38	SCREW	ST/PMMA		2
39	SCREW	ST/PMMA		2
40	SCREW	ST/PMMA		2
41	SCREW	ST/PMMA		2
42	SCREW	ST/PMMA		2
43	SCREW	ST/PMMA		2
44	SCREW	ST/PMMA		2

ITEM	PART NAME	DESCRIPTION	PART NUMBER	QTY
45	SCREW	ST/PMMA		2
46	SCREW	ST/PMMA		2
47	SCREW	ST/PMMA		2
48	SCREW	ST/PMMA		2
49	SCREW	ST/PMMA		2
50	SCREW	ST/PMMA		2
51	SCREW	ST/PMMA		2
52	SCREW	ST/PMMA		2
53	SCREW	ST/PMMA		2
54	SCREW	ST/PMMA		2
55	SCREW	ST/PMMA		2
56	SCREW	ST/PMMA		2
57	SCREW	ST/PMMA		2
58	SCREW	ST/PMMA		2
59	SCREW	ST/PMMA		2
60	SCREW	ST/PMMA		2
61	SCREW	ST/PMMA		2
62	SCREW	ST/PMMA		2
63	SCREW	ST/PMMA		2
64	SCREW	ST/PMMA		2
65	SCREW	ST/PMMA		2
66	SCREW	ST/PMMA		2
67	SCREW	ST/PMMA		2
68	SCREW	ST/PMMA		2
69	SCREW	ST/PMMA		2
70	SCREW	ST/PMMA		2
71	SCREW	ST/PMMA		2
72	SCREW	ST/PMMA		2
73	SCREW	ST/PMMA		2
74	SCREW	ST/PMMA		2
75	SCREW	ST/PMMA		2
76	SCREW	ST/PMMA		2
77	SCREW	ST/PMMA		2
78	SCREW	ST/PMMA		2
79	SCREW	ST/PMMA		2
80	SCREW	ST/PMMA		2
81	SCREW	ST/PMMA		2
82	SCREW	ST/PMMA		2
83	SCREW	ST/PMMA		2
84	SCREW	ST/PMMA		2
85	SCREW	ST/PMMA		2
86	SCREW	ST/PMMA		2
87	SCREW	ST/PMMA		2
88	SCREW	ST/PMMA		2
89	SCREW	ST/PMMA		2
90	SCREW	ST/PMMA		2
91	SCREW	ST/PMMA		2
92	SCREW	ST/PMMA		2
93	SCREW	ST/PMMA		2
94	SCREW	ST/PMMA		2
95	SCREW	ST/PMMA		2
96	SCREW	ST/PMMA		2
97	SCREW	ST/PMMA		2
98	SCREW	ST/PMMA		2
99	SCREW	ST/PMMA		2
100	SCREW	ST/PMMA		2



ITEM	PART NAME	DESCRIPTION	PART NUMBER	QTY
101	SCREW	ST/PMMA		2
102	SCREW	ST/PMMA		2
103	SCREW	ST/PMMA		2
104	SCREW	ST/PMMA		2
105	SCREW	ST/PMMA		2
106	SCREW	ST/PMMA		2
107	SCREW	ST/PMMA		2
108	SCREW	ST/PMMA		2
109	SCREW	ST/PMMA		2
110	SCREW	ST/PMMA		2
111	SCREW	ST/PMMA		2
112	SCREW	ST/PMMA		2
113	SCREW	ST/PMMA		2
114	SCREW	ST/PMMA		2
115	SCREW	ST/PMMA		2
116	SCREW	ST/PMMA		2
117	SCREW	ST/PMMA		2
118	SCREW	ST/PMMA		2
119	SCREW	ST/PMMA		2
120	SCREW	ST/PMMA		2
121	SCREW	ST/PMMA		2
122	SCREW	ST/PMMA		2
123	SCREW	ST/PMMA		2
124	SCREW	ST/PMMA		2
125	SCREW	ST/PMMA		2
126	SCREW	ST/PMMA		2
127	SCREW	ST/PMMA		2
128	SCREW	ST/PMMA		2
129	SCREW	ST/PMMA		2
130	SCREW	ST/PMMA		2
131	SCREW	ST/PMMA		2
132	SCREW	ST/PMMA		2
133	SCREW	ST/PMMA		2
134	SCREW	ST/PMMA		2
135	SCREW	ST/PMMA		2
136	SCREW	ST/PMMA		2
137	SCREW	ST/PMMA		2
138	SCREW	ST/PMMA		2
139	SCREW	ST/PMMA		2
140	SCREW	ST/PMMA		2
141	SCREW	ST/PMMA		2
142	SCREW	ST/PMMA		2
143	SCREW	ST/PMMA		2
144	SCREW	ST/PMMA		2
145	SCREW	ST/PMMA		2
146	SCREW	ST/PMMA		2
147	SCREW	ST/PMMA		2
148	SCREW	ST/PMMA		2
149	SCREW	ST/PMMA		2
150	SCREW	ST/PMMA		2

Bill of Material

Model CD-68

Packing				
No.		Part No.	Description	Qty
1		011006680000	Main Unit:	1
2		160110066800	Gift Box: 298x298x185MM	1
3		161110066800	Polyfoam	2
4		211000066800	Instruction Manual	1
5		151000018401	AC Cord (Black) 1=1800mm	1
6		160410066800	Polybag (AC Cord)	1
7		160410066800	Polybag (Main Unit): 400 x 480MM	1
8		1604142000700	Polybag: 3.5x10inch	1
9		211003066800	Rating Plate	1
10		271010952500	Rubber Foot: 9.5*2.5MM	4
11		1410530066800	Handle	1
12		1410040066800	Battery Door	1
13		211008066800	QC Pass Label	1
14		141017066800	Cassette Door Lens	1
15		141010066800	LED Lens	1
16		16120202000	PVC Plate 20x20mm	1
17		161210201000	PVC Plate 26x8mm	1
18		211009066800	Serial No. Label	1
19		1715060035006	Fluffy Paper (For CD Door) 60x35x0.6mm	1
Main Unit				
No.		Part No.	Description	Qty.
1		141000066800	CD Door	1
2		141016066800	CD Door Lens	1
3		141037066800	Gear Base	2
4		141038066800	Gear	2
5		141038066800	Gear Washer	2
6		141013066800	Function Knob	1
7		240112450200	Sponge with Tape:12x5x2MM	1
8		141048066800	Fibre Washer: 14x2.8x1.0mm	1
9		141018066800	Bass Function Knob	
10		141014066800	Band Switch	1
11		141047066800	Tuning Knob	1
12		141022066800	Volume Knob	1
13		141016066800	CD Function Knob	1 set
14		141039066800	CD Lens Cover	1
15		141006066800	Cassette Function Knob	1
16		141036066800	Cassette Door	1
17		141041066800	Cassette Door Lens	1
18		141042066800	Cassette Door Gear Bracket	1
19		141002066800	Front Cabinet	1
20		141003066800	CD Compartment	1
21		141001066800	CD Door	1

Bill of Material

22	141054066800	Recording PCB Bracket	1
23	141055066800	Back Cabinet	1
24	141044066800	Dial Pointer	1
25	141040066800	Dial Pointer Bracket	1
26	141042066800	Dial Pointer Plate	1
27	141042066800	LED Lens	1
28	141042066800	PVC Gear	1
29	141042066800	Middle Gear	1
30	141042066800	Chucking Plate Cover	1
31	141042066800	Chucking Plate Holder	1
32	141042066800	Dial Lens	1
33	141056066800	AC Socket	1
34	271012101000	Sponge with Tape:12x10x10MM	1
35	111500000000	FM Rod Antenna: 9121#	1
36	250101100000	CD Door Switch: PC-003P	1
37	257111000000	CD Leaf Switch: CF-323 50G	1
38	251104316150	Function Switch: SS63D01M15	1
39	251106216150	Band Switch: SS43D01M15	1
40	251122100000	Power Switch (For Dual Voltage Only): SS12J01G0	1
41	110400000000	Cassette Door - Spring	1
42	110400066801	CD Door - Spring	1
43	111600066800	Speaker Grille	2
44	110900066800	Speaker Clip	2
45	110203066800	Battery Contact Plate (+/ -)	2
46	110201066800	Battery Contact Plate (+)	1
47	110202066800	Battery Contact Plate (-)	1
48	111100066800	Magnet Plate	1
49	263030001605	Magnet:30x16x5MM	1
50	111400066800	Soldering Plate	2
51	111700066800	Recording Plate	1
52	111000066800	Heat Sink	1
53	070400066800	LED Display: FD-R3016-P10	1
54	040650233000	Variable Resistor :5K WR085N-B5K	1
55	040450333000	Volume Control:WR1613G-A50K-15KQ	1
56	120100506680	AC Socket	1
57	130000668000	Power Transformer	1
58	031006681000	Radio PCB :200x160x1.6MM	1
59	031006680300	Key Board:173x43x1.6MM	1
60	031006680100	CD PCB:127x105x1.6MM	1
61	031006680900	Jack PCB:34x20x1.6MM	1
62	031006681000	Tape PCB:70x50x1.6MM	1
63	031006681100	PCB LED:22x22x1.6MM	1
64	031006680700	PCB Volume Large:36x37x1.6MM	1
65	031006680701	PCB Volume Small:36x33x1.6MM	1
66	150300160000	Jumper 16mm	1
67	180100668000	Speaker: 3 inch	2

Bill of Material

68	200210066800	CD Mechanism:DAIT3CN 16PIN	1
69	200220066800	Cassette Mechanism	1
70	141048066800	Rubber	2
71	141048066801	Rubber	2
72	141049066800	Plastic Washer	4
73	070400000000	LED Red Lamp	1
74	050744300200	PVC: AM126x2 FM20x2	1
75	060312015000	AM Coil	1
76	141513509920	Ferrite Bar : 5x13x55MM	1
77	141513509920	Bar Holder 5x13MM (inside)	1
78	110300066800	Eyelet 1.6x3MM	1
79	271140530410	Shielding Paper 53x41MM (irregular)	1
80	150001612100	FFC Flat Cable	1
81	151200212100	Socket Housing 2PIN120MM	2
82	151200315100	5PIN150MM	1
83	151200412100	4PIN120MM	1
84	151200512100	5PIN120MM	1
85	151200515100	5PIN180MM	1
86	151200620100	6PIN200MM	1
87	151200816100	8PIN160MM	1
88	151200818100	8PIN180MM	1
89	150200615100	6PIN 150MM Flat Cable	1
90	150201004000	10PIN 40MM Flat Cable	1
91	151500212100	Double Shield Wire: 200MM	1
92	150870013102	PVC Wire:130MM(Red)	1
93	150870015102	150MM(Red)	1
94	150870018102	180MM(Black)	1
95	150870018102	30MM(Black)	1
96	150870013101	130MM(Black)	2
97	150870008001	80MM(Black)	1
98	150870010102	100MM(Red)	1
99	150870020102	200MM(Red)	1
100	150870010109	250MM(White)	1
101	150870015102	150MM(Red)	1
102	150870018102	280MM(Red)	1
103	150870025101	250MM(Black)	1
104	150870028100	280MM(Black)	1
105	150870028100	120MM(Black) (For Dual Voltage Only)	1
106	110007280800	Screw: 2.8x8PWA 5MM	24
107	110008280800	2.8x8PWA 8MM	5
108	110008301200	3x12PWA 8MM	2
109	110007260800	2.6x 8 PA 5MM	9
110	110007260800	2.6x 8 B A 5 MM	3
111	110007200800	2.0x8PA 4MM	8
112	110007201200	2.0x12PA 4MM	1
113	110007281200	2.8x12PA 5MM	7
114	110007281000	2.8x10PA 5MM	5

Bill of Material

115		110005200300	2.0x3BM 3.8MM	4
116		110007280800	2.8x8PA 5MM	6
117		110005260500	2.6x5BM 5MM	1
118		110005301000	3.0x10BM 6MM	1
119		110007280800	2.6x4KM 4MM	2
Components on CD PCB				
No.		Part No.	Description	Qty
1		031006680100	CD PCB : 127x105x1.6MM	
2		091007860200	IC : LC78602RE-8616	1
3		091000654100	LA6541D	1
4		091000924200	LA9242M	1
5		2.32017E+11	Ceramic Filter :16.934M(2 Pins)	1
6		120201606680	Wafer 16PIN (FABSD1652A)	1
7		070239000000	Zener Diode:3.9V/0.5W	1
8		070000080100	Diode : GM801	2
9		070000414800	IN4148	2
10		080000076400	Transistor : B764E2D	1
11		080000805000	C8050C	1
12		080000193600	ISD1936	2
13		080000134600	ISA1346	2
14		080000060800	A608N	1
15		050118015000	Ceramic Cap: 18PNPO	1
16		050130015000	30PNPO	2
17		050110115000	101P	1
18		050139115000	391P	4
19		050168115000	681P	1
20		050110215000	102P	2
21		050133215000	332P	2
22		050120315000	203P	3
23		050133315000	333P	1
24		050110415000	104P	1
25		050433431000	Elect. Cap : 0.33UF/10V	2
26		050422531000	2.2UF/10V	1
27		050433531000	3.3UF/10V	1
28		050447531000	4.7UF/10V	3
29		050410631000	10UF/10V	3
30		050422631000	22UF/10V	1
31		050447631000	47UF/10V	1
32		050410731000	100UF/10V	8
33		050422731000	220UF/10V	2
34		050447731000	470UF/10V	1
35		050410831000	1000UF/10V	1
36		050222216000	Mylar Cap : 222K/2A	1
37		050233216000	332K/2A	1
38		050268216000	682K/2A	1

Bill of Material

39		050215316000	153K/2A	1
40		050233316000	333K/2A	2
41		050247216000	473K/2A	2
42		050210416000	104P/2A	3
43		050212416000	124K/2A	1
44		050222416000	224K/2A	1
45		040510013000	Resistor (1/4W±5%):10	1
46		040510113000	100	1
47		040522113000	220	2
48		040533113000	330	2
49		040547113000	470	1
50		040556113000	560	8
51		040510213000	1K	3
52		040515213000	1.5K	1
53		040522213000	2.2K	3
54		040547213000	4.7K	1
55		040556213000	5.6K	1
56		040568213000	6.8K	2
57		040510313000	10K	9
58		040512313000	12K	1
59		04051513000	15K	5
60		040522313000	22K	2
61		040527313000	27K	1
62		040533313000	33K	3
63		040547313000	47K	2
64		040556313000	56K	2
65		040510413000	100K	6
66		040515413000	150K	3
67		040527413000	180K	2
68		040518413000	270K	1
69		040510513000	1M	1
70		150300035000	Jumper: 3.5MM	2
71		150300040000	4MM	2
72		150300045000	4.5MM	1
73		150300050000	5MM	7
74		150300055000	5.5MM	6
75		150300060000	6MM	10
76		150300065000	6.5MM	1
77		150300070000	7MM	5
78		150300075000	7.5MM	2
79		150300080000	8MM	2
80		150300100000	10MM	1
81		150300120000	12MM	2
82		150300130000	13MM	3

Bill of Material

83		150300160000	16MM	1
Components on Radio PCB				
No.		Part No.	Description	Qty.
1		031006681000	Radio PCB: 200x160x1.6MM	
2		091000604300	IC : YD7343/KIA6043	1
3		091000200300	CD2003/SA2003	1
4		091000822700	TA8227	1
5		091000780800	IC: KIA7808/LM7808	1
6		130110101202	IFT: Red(102-947)	1
7		130101001201	Green(100-151)	1
8		232000107300	Ceramic Filter:10.7M	1
9		232000455300	455B(465B)	1
10		060002510800	FM Coil: 0.7x4.5x2.5T	1
11		060003510800	0.7x4.5x3.5T	1
12		060004510800	0.7x4.5x4.5T	1
13		110300066800	Eyelet: 1.6x3MM	10
14		070000400100	Diode : IN4001	4
15		070000414800	Diode : IN4148	2
16		080000901400	Transistor : 9014C	2
17		080000181500	Transistor : 1815C	2
18		070262000000	Zener Diode: 6.2V/0.5W	2
19		150300030000	Jumper: 3MM	1
20		150300040000	4MM	1
21		150300045000	4.5MM	2
22		150300060000	6MM	4
23		150300070000	7MM	10
24		150300075000	7.5MM	1
25		150300095000	9.5MM	2
26		150300100000	10MM	1
27		101151251100	Fuse :1.5A/250V	1
28		040522013000	Resistor(1/4W±5%):4.7	1
29		040547013000	22	1
30		040512113000	100	1
31		040510113000	120	3
32		040522113000	220	1
33		040547113000	470	2
34		040556113000	560	2
35		040518213000	1K	3
36		040510213000	1.8K	2
37		040522213000	2.2K	14
38		040547213000	4.7K	4
39		040556213000	5.1K	2
40		040551213000	5.6K	1
41		040582213000	8.2K	2

Bill of Material

42		040510313000	10K	3
43		040522313000	22K	2
44		040527313000	27K	2
45		040556313000	56K	5
46		040510413000	100K	1
47		040522413000	220K	1
48		040510513000	1M	2
49		050447432000	Elect. Cap : 0.47UF/16V	2
50		050410532000	1UF/16V	2
51		050422532000	2.2UF/16V	1
52		050433532000	3.3UF/16V	1
53		050447532000	4.7UF/16V	8
54		050422632000	22UF/16V	1
55		050410732000	100UF/16V	5
56		050422732000	220UF/16V	3
57		050447732000	470UF/16V	3
58		050410832000	1000UF/16V	1
59		050422832000	2200UF/16V	1
60		050103015000	Ceramic Cap ±5%: 15P NPO	2
61		050115015000	3P NPO	1
62		050125015000	25P NPO	2
63		050133015000	33P NPO	3
64		050110115000	100P NPO	1
65		050115115000	150P NPO	1
66		050102115000	331P	1
67		05016815000	681P	1
68		050133115000	102P	2
69		050122315000	203P	7
70		050120315000	223P	1
71		050210216000	Mylar Cap: 102K/2A	1
72		050220316000	203K/2A	2
73		050227316000	273K/2A	2
Components on Tape PCB				
No.		Part No.	Description	Qty.
1		031006681000	Tape PCB :70x50x1.6MM	
2		091002224100	IC:SIA0241/22241	1
3		25110821020	Tape Switch :PS82D02	1
4		040539013000	Resistor (1/4W±5%):39	2
5		040510113000	100	1
6		040510213000	1K	3
7		040512213000	1.2K	2
8		040527213000	2.7K	1
9		040547213000	4.7K	4
10		040556213000	5.6K	2
11		040515313000	15K	2
12		040527313000	27K	2

Bill of Material

13		040539313000	39K	2
14		040510513000	1M	1
15		050122215000	Ceramic Cap: 222P	2
16		050447531000	Elec. Cap : 4.7UF/10V	2
17		050410631000	10UF/10V	3
18		050433631000	33UF/10V	2
19		050476531000	47UF/10V	2
20		050422731000	220UF/16V	1
21		050247216000	Mylar Cap: 472K/2A	2
22		050233316000	273K/2A	2
23		150300030000	Jumper: 3MM	1
24		150300030000	5MM	1
25		150300030000	6MM	1
26		110300066800	Eyelet: 1.6x3MM	3

Components on Jack PCB

No.		Part No.	Description	Qty.
1		031006680900	Jack PCB:34x20x1.6MM	
2		040522113000	Resistor (1/4W±5%):220	2
3		120300035070	Earphone Jack:ET-3507-02	1

Components on Key Board

No.		Part No.	Description	Qty.
1		031006680300	Key Board 173x43x1.6MM	
2		080000901500	Transistor : 9015C	2
3		040556213000	Resistor(1/4W±5%):560	6
4		040539213000	3.9K	2
5		150300040000	Jumper: 4MM	3
6		150300060000	6MM	4
7		250100010270	Tact Switch :TS-00102(6x6x4.3MM)	6
8		250100022090	Push Switch :PS22E09L	1