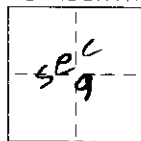


CORNER RECORD

COUNTY OF MONO T. 5 South R. 33 East SEC. 9 MBE MERIDIAN CALIFORNIA

CORNER TYPE: GOV'T. CORNER ☐ MEANDER ☐ RANCHO ☐ CONTROL ☐ OTHER ☒

CORNER IDENTIFICATION - DATE OF VISIT AUGUST 8 1989



LOT 16, MB 1/41 Chalfont Valley Estates

CORNER - LEFT AS FOUND ☐ FOUND AND TAGGED ☐ REESTABLISHED OBLITERATED CORNER ☒ REBUILT ☐

PHYSICAL DESCRIPTION OF CORNER FOUND: EVIDENCE AND METHOD USED TO IDENTIFY OR REESTABLISH

FOUND 1 1/2" I.P.'S. AS SHOWN ON NLY SUBDIV. BNDY. USED RECORD DISTANCES/BEARINGS TO ESTABLISH NLY CORNERS OF LOT 16. FOUND DECAYED 2"X2" HUB AT SOUTHEAST CORNER. REPLACED WITH REBAR & CAP

PHYSICAL DESCRIPTION OF MONUMENTS REBUILT OR PERPETUATED

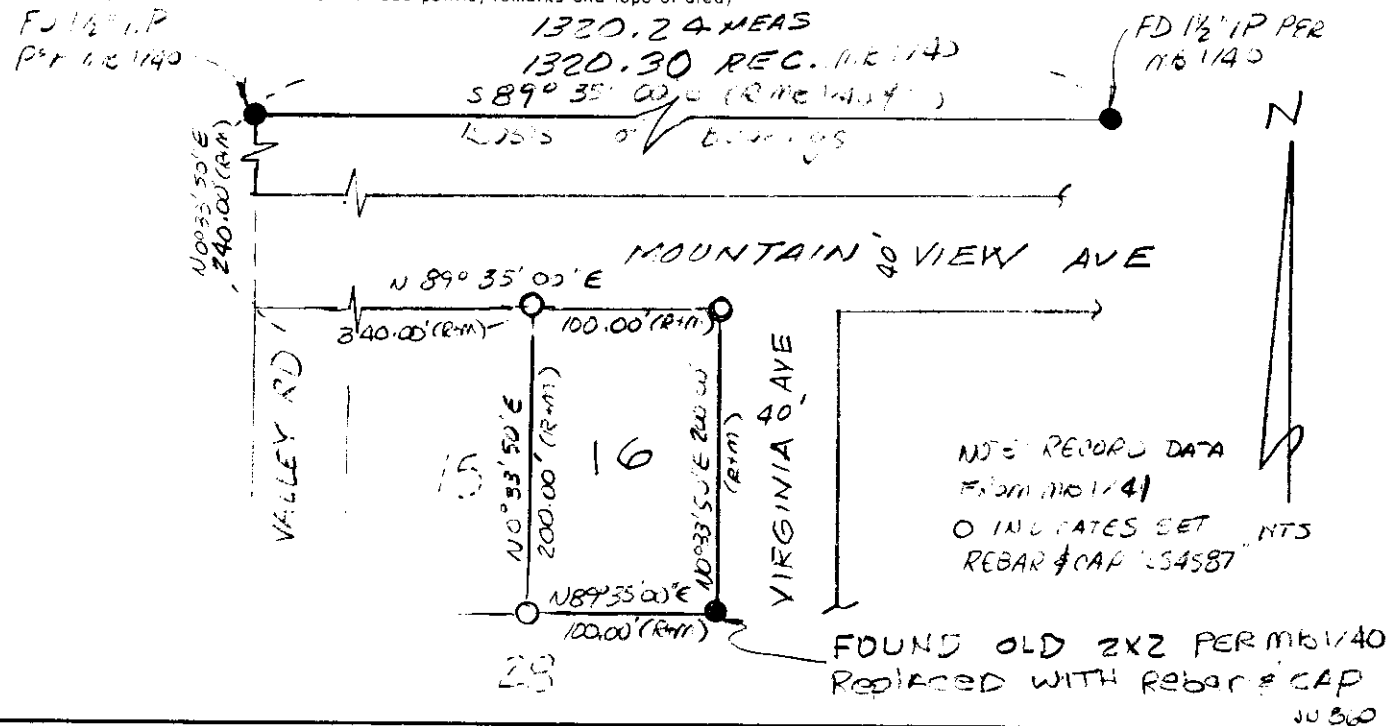
set 5/8" X 20' REBAR WITH CAP LS 4587

CALIFORNIA COORDINATE SYSTEM ORDER: FIRST ☐ SECOND ☐ THIRD ☐

STATIONS USED: NGS (USC & GS) ☐ STATE ☐ COUNTY ☐ OTHER ☐ STATION _____ STATION _____

ZONE _____ ELEVATION _____ NORTHINGS (Y) _____ EASTINGS (X) _____

SKETCH: (Include reference tie or witness points, remarks and topo of area)



SURVEYOR'S CERTIFICATE

THIS CORNER RECORD WAS PREPARED BY ME OR UNDER MY DIRECTION IN CONFORMANCE WITH THE LAND SURVEYORS ACT ON CHALFANT 1989

SIGNED: [Signature]

L.S. or R.C.E. No. 4587

SEAL

COUNTY SURVEYOR'S CERTIFICATE

THIS CORNER RECORD WAS RECEIVED 10-26 1989 AND EXAMINED AND FILED 5-11 1990

BY: [Signature]

TITLE MONO COUNTY SURVEYOR

DOCUMENT No. 5533-9.1

STATEMENT ON BACK OF SHEET

YES ☐ NO ☒