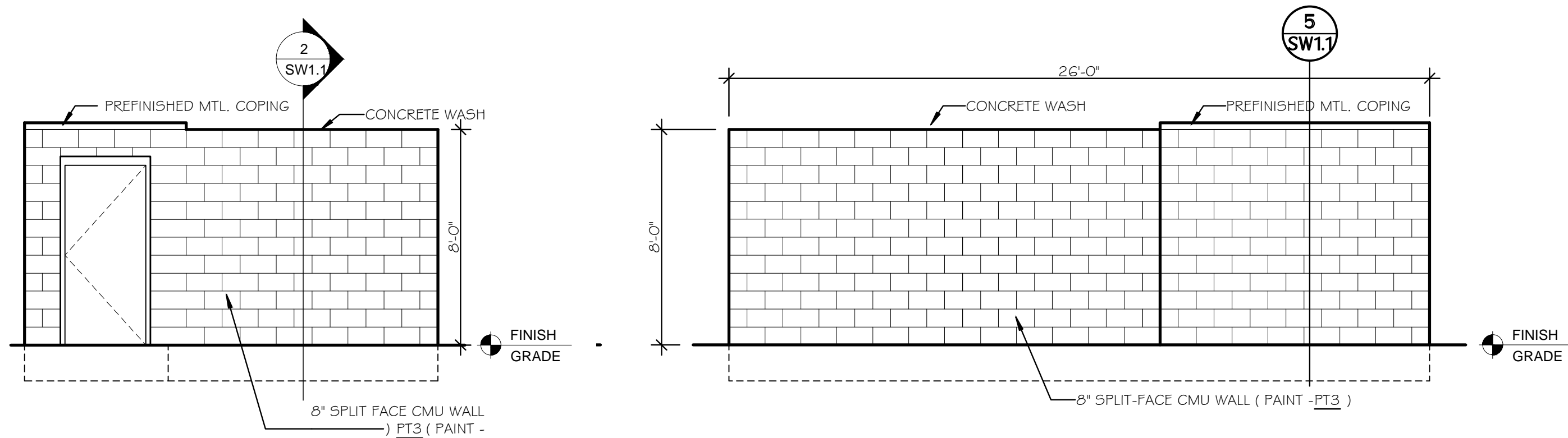
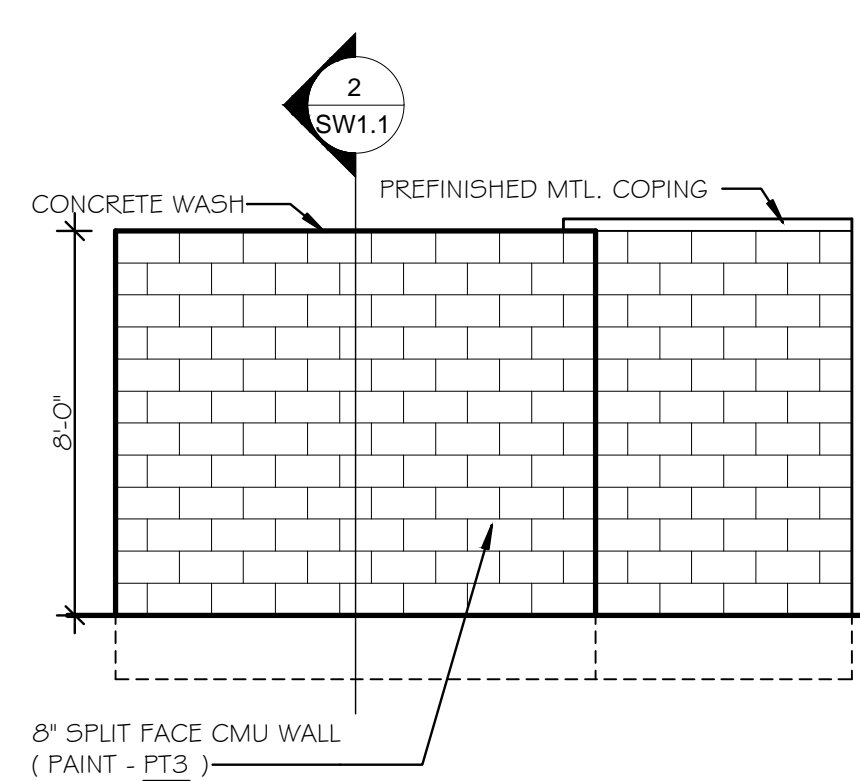


O:\2639 Jack's - Olive Branch, MS\1\_Dwg\1\_Current BIM-CAD\SW1.1.dwg - dkiley

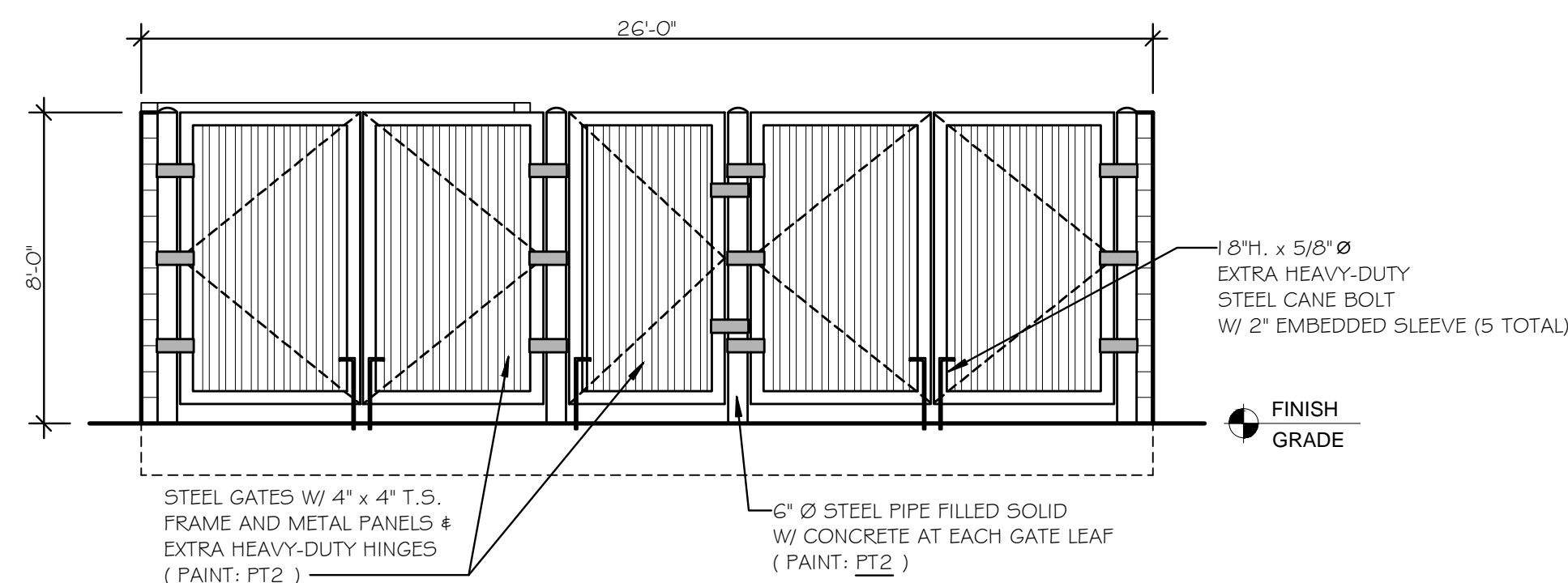


**D ELEVATION**  
SW1.1 SCALE: 1/4" = 1'-0"

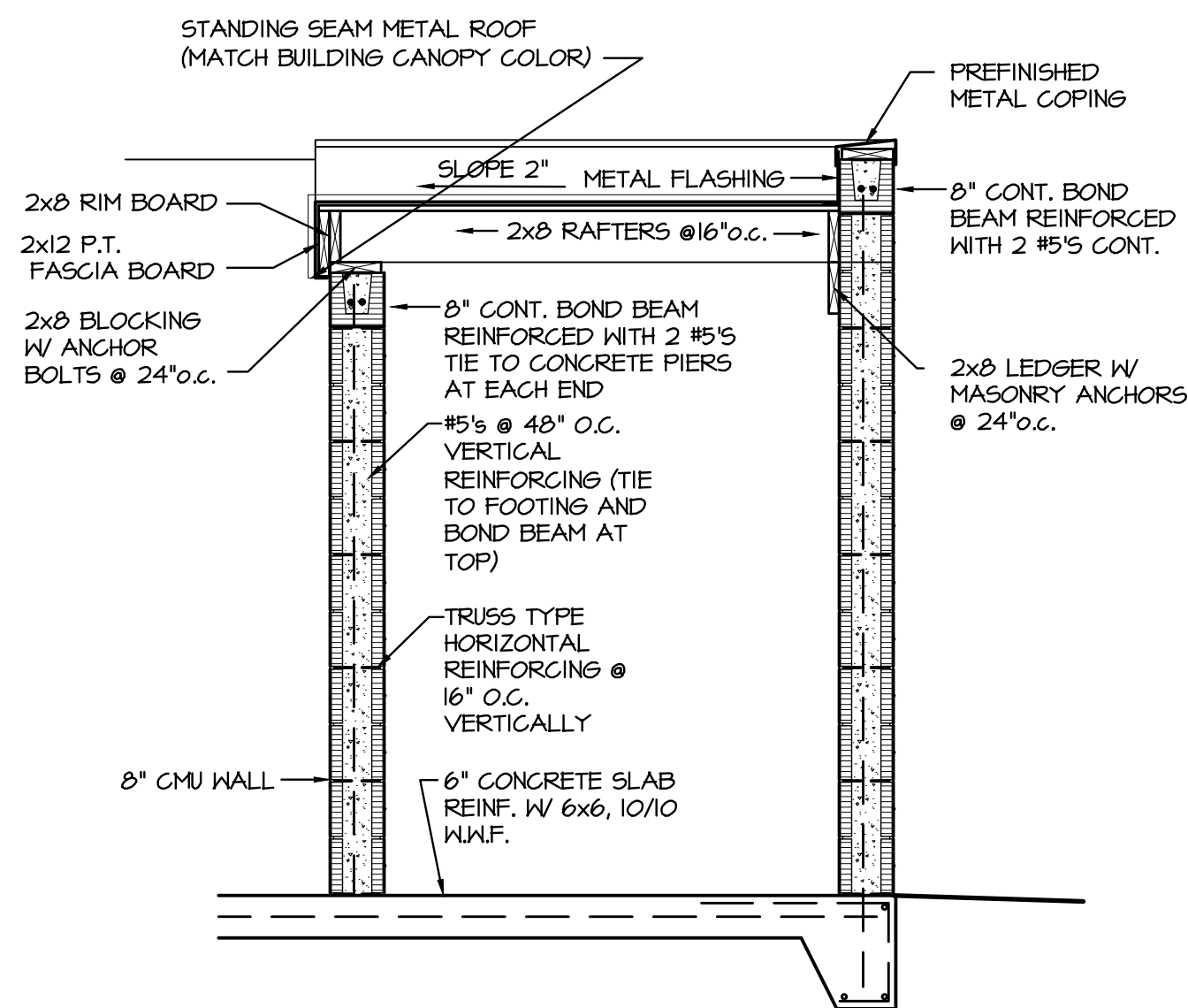
**C ELEVATION**  
SW1.1 SCALE: 1/4" = 1'-0"



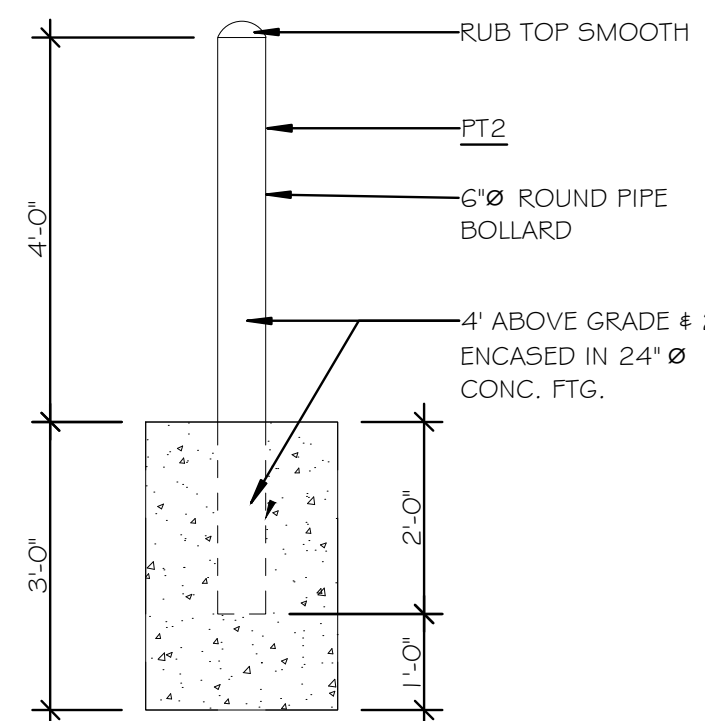
**B ELEVATION**  
SW1.1 SCALE: 1/4" = 1'-0"



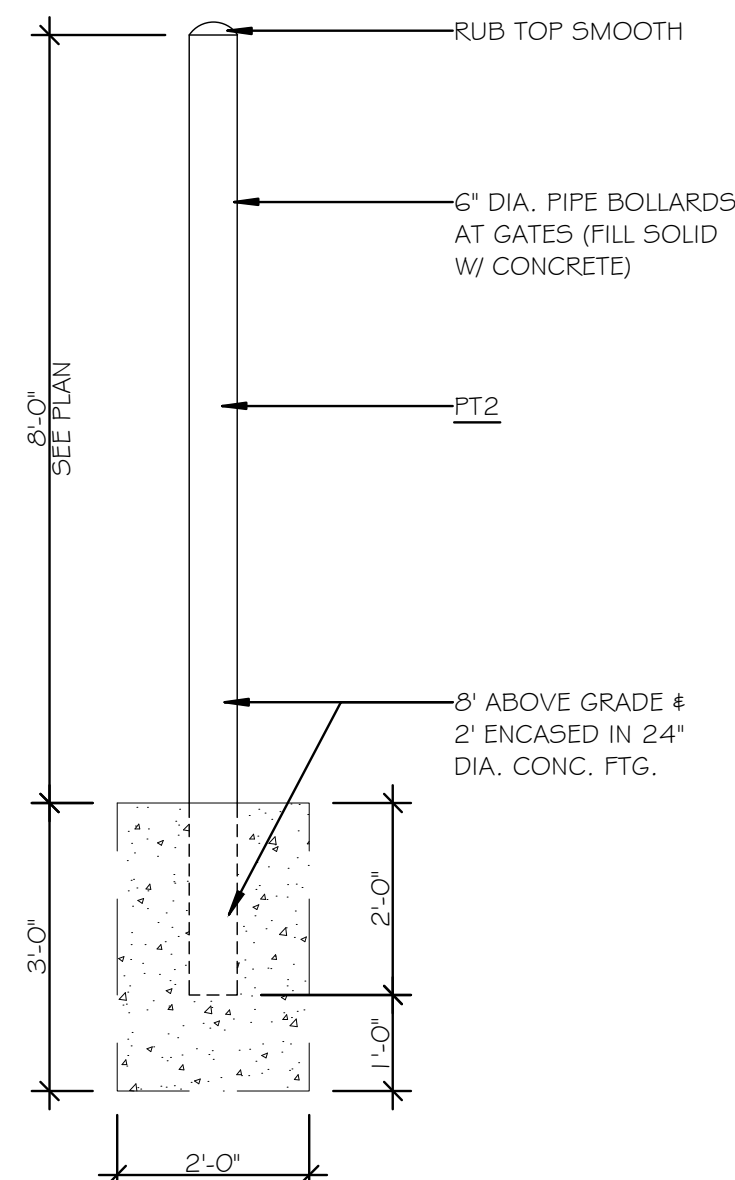
**A ELEVATION**  
SW1.1 SCALE: 1/4" = 1'-0"



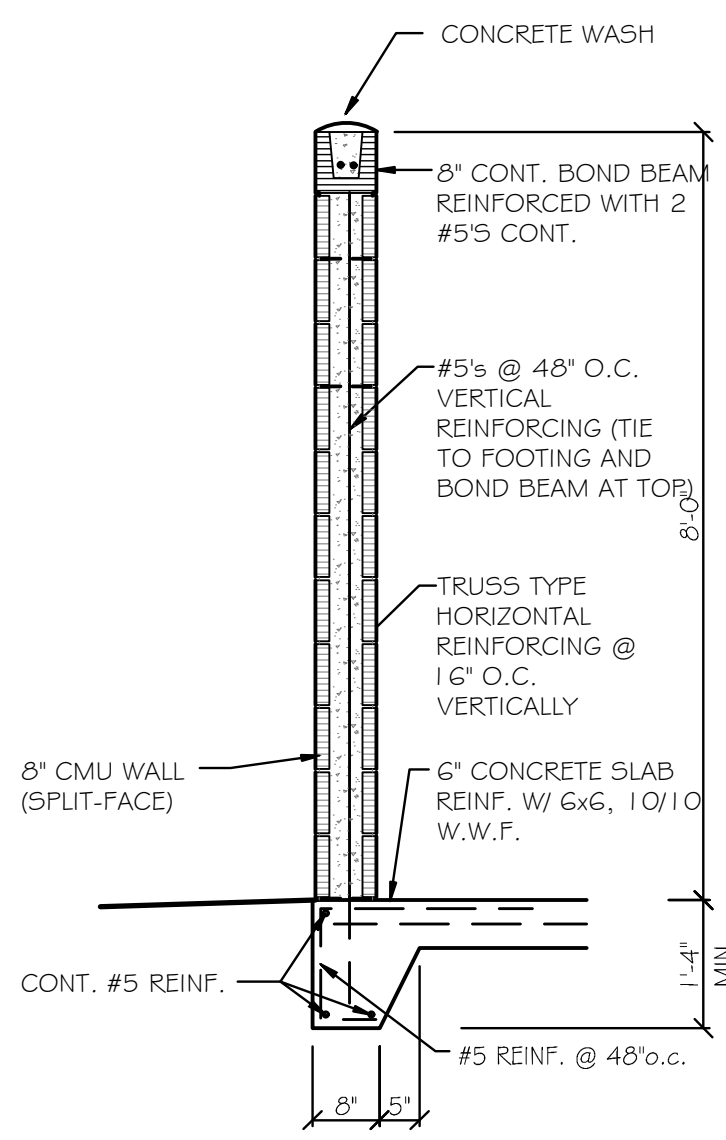
**5 STORAGE ROOM SECTION**  
SW1.1 SCALE: 1/2" = 1'-0"



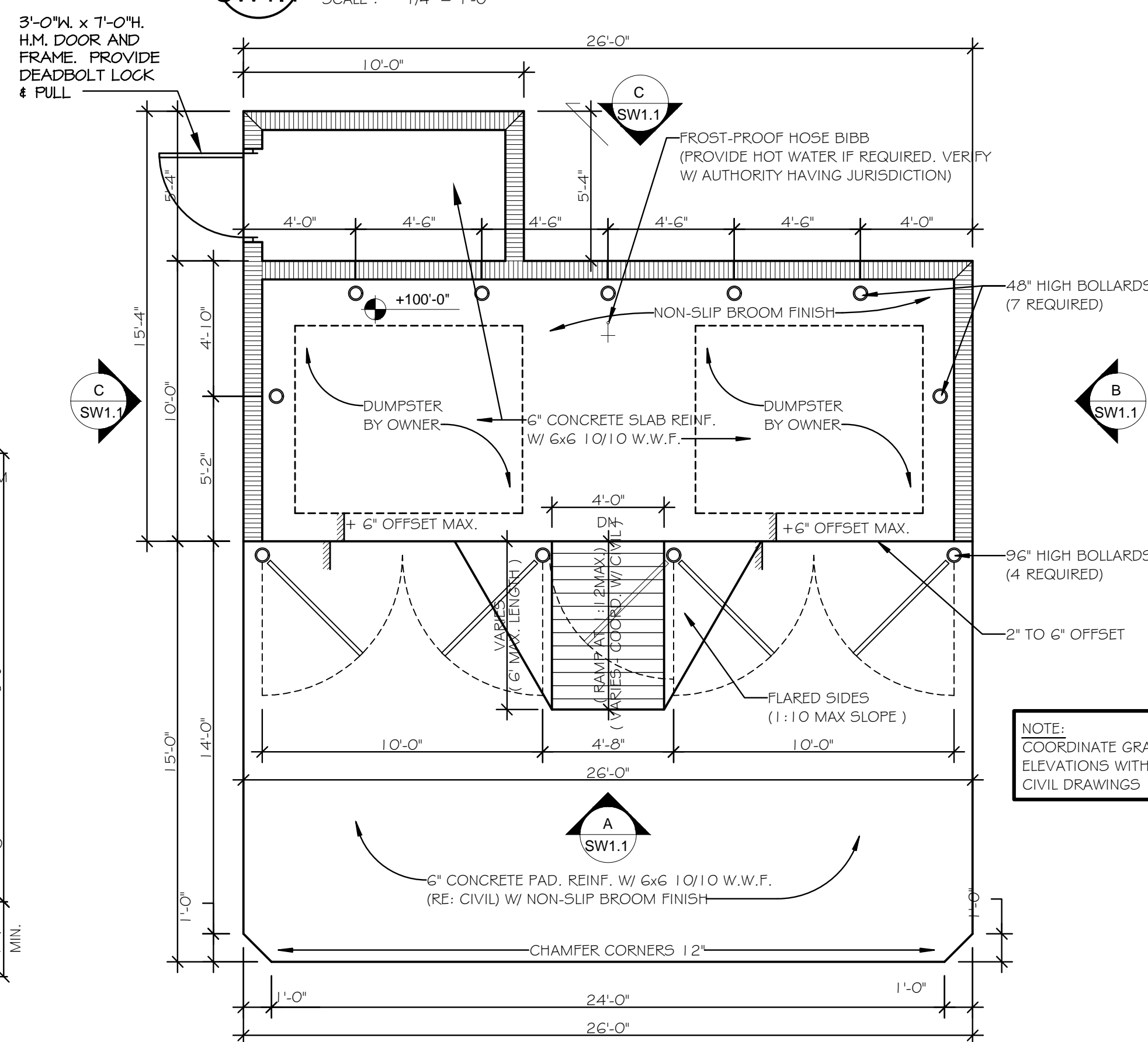
**4 BOLLARD DETAIL**  
SW1.1 SCALE: 1/2" = 1'-0"



**3 GATE POST**  
SW1.1 SCALE: 1/2" = 1'-0"

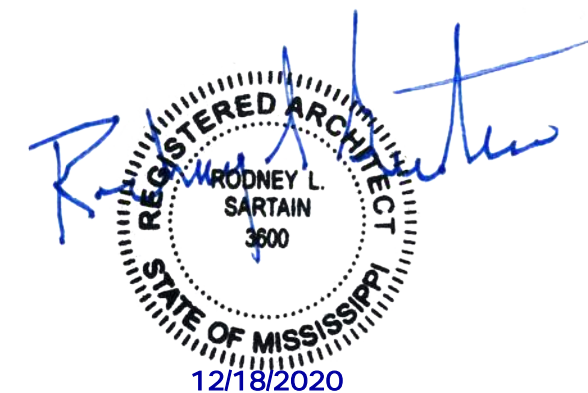


**2 CMU WALL SECTION**  
SW1.1 SCALE: 1/2" = 1'-0"



**1 DUMPSTER PLAN**  
SW1.1 SCALE: 1/4" = 1'-0"

PAINT SCHEDULE	
PT1	SHERWIN WILLIAMS - 7668 - MARCH WIND
PT2	SHERWIN WILLIAMS - 6258 - TRICORN BLACK
PT3	SHERWIN WILLIAMS - 0052 - PEARL GRAY
NOTE USE SHERWIN WILLIAMS DIRECT TO METAL (DTM) ENAMEL IN SEMI-GLOSS SHEEN WHEN APPLIED TO METAL	



PERMIT ISSUE

No.	Description	Date

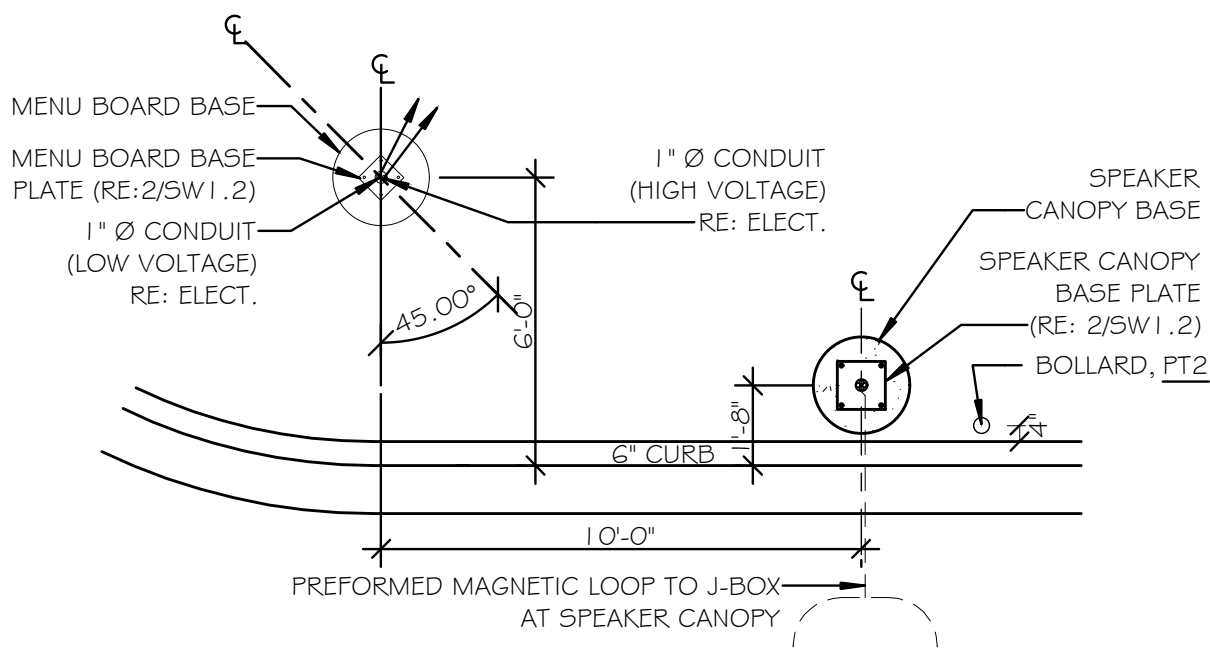
Jack's Family Restaurants  
Southern Charm (SC-68)  
OLIVE BRANCH, MISSISSIPPI

SITE WORK

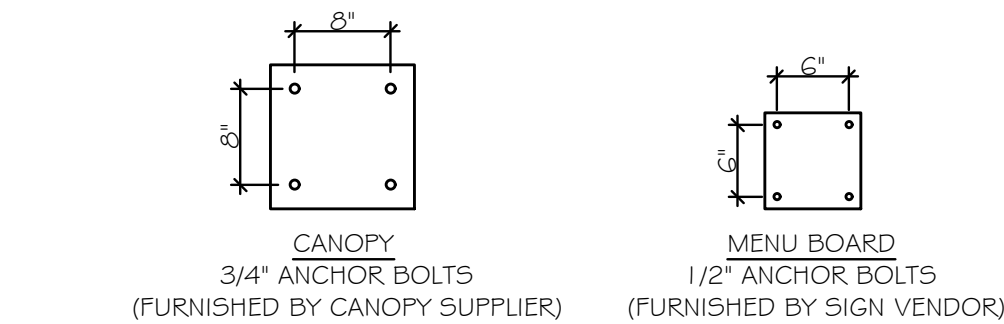
RODNEY L. SARTAIN - ARCHITECT

1909 COURTNEY DR. HOMEWOOD, ALABAMA 35209

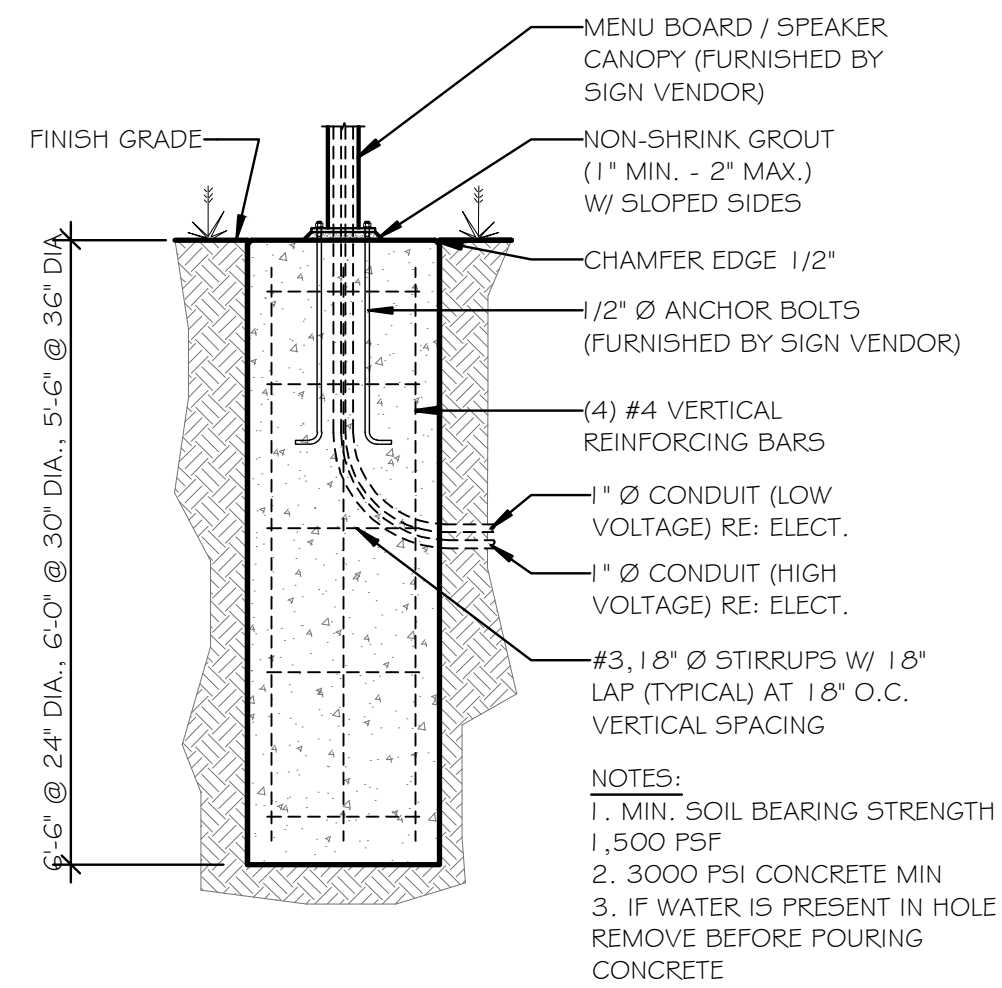
OFFICE: (205) 879-5458  
FAX: (205) 879-5460  
EMAIL: rls@rlsdesigngroup.com



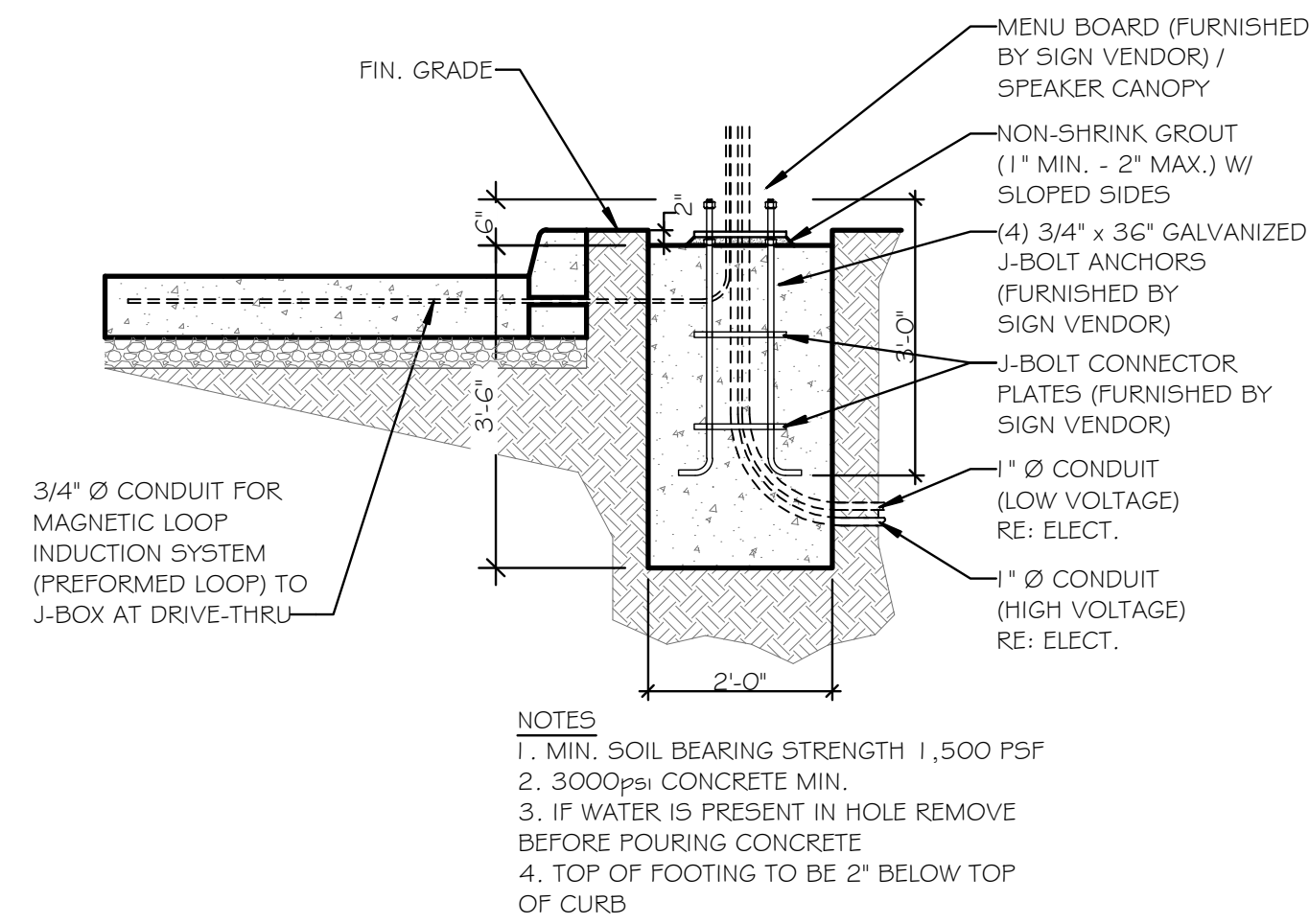
1 MENU BOARD LAYOUT  
SCALE : 1/4" = 1'-0"



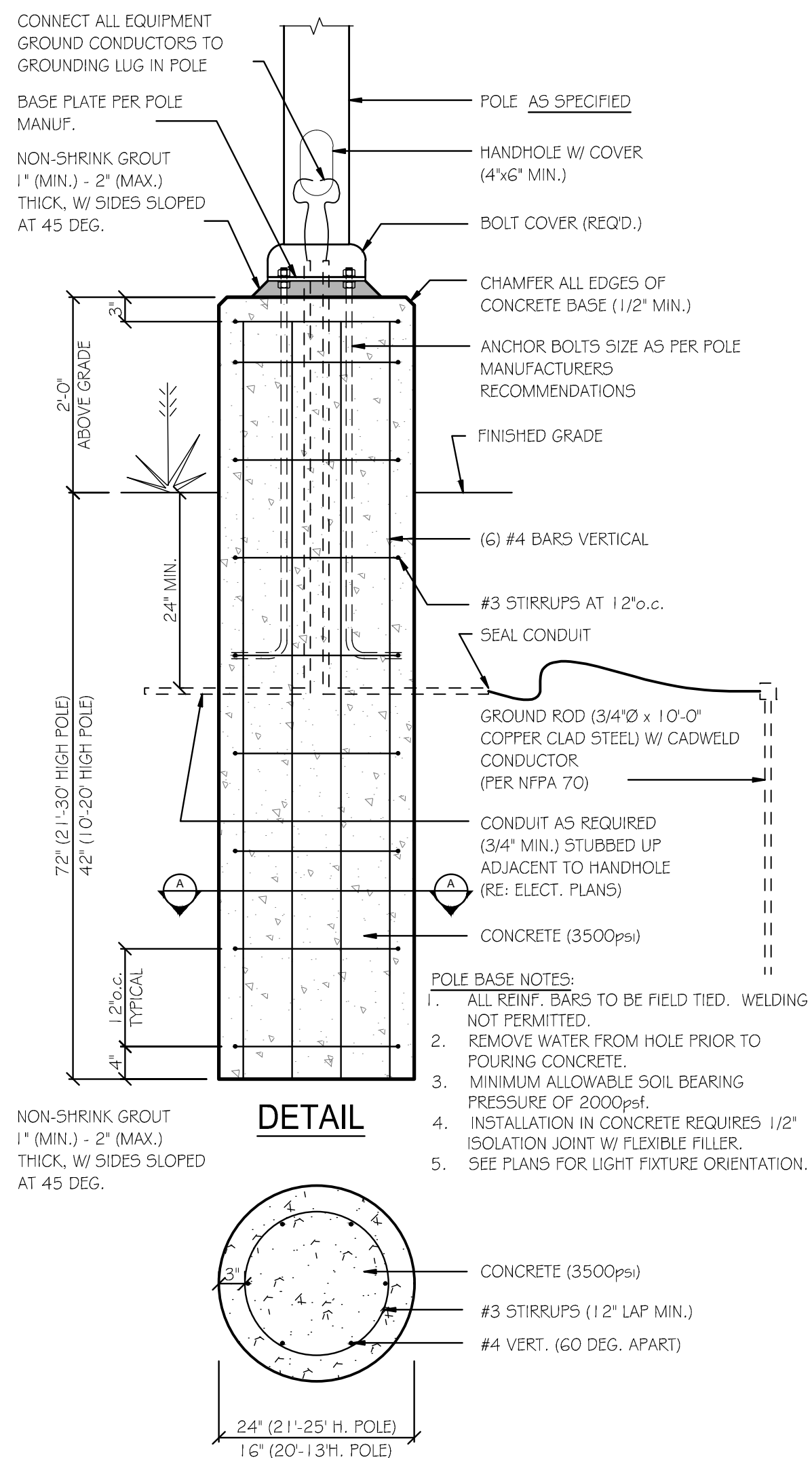
2 ANCHOR BOLT LAYOUT  
SCALE : 3/4" = 1'-0"



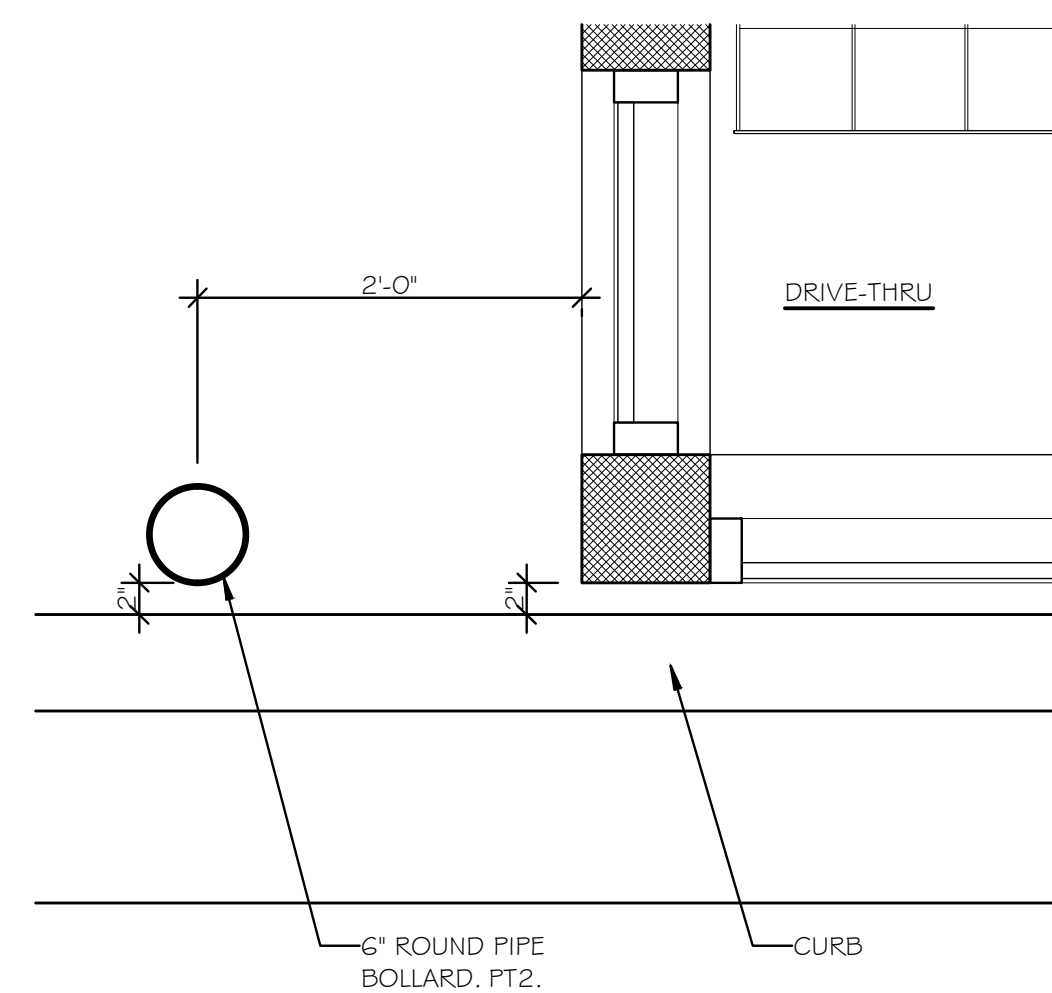
3 MENU BOLLARD BASE  
SCALE : 1/2" = 1'-0"



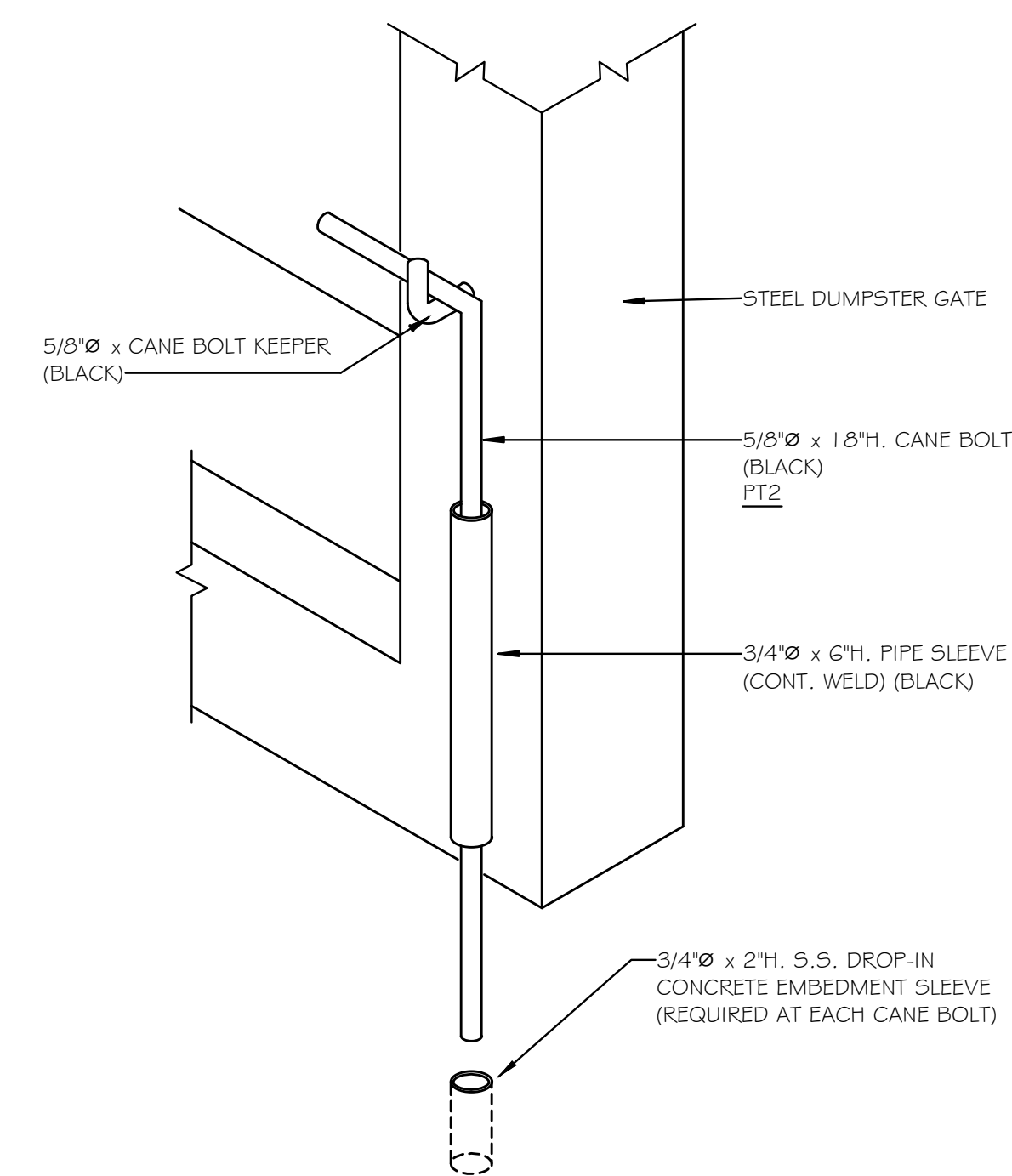
4 SPEAKER CANOPY BASE  
SCALE : 1/2" = 1'-0"



5 BOLLARD DETAIL  
SCALE : 3/4" = 1'-0"



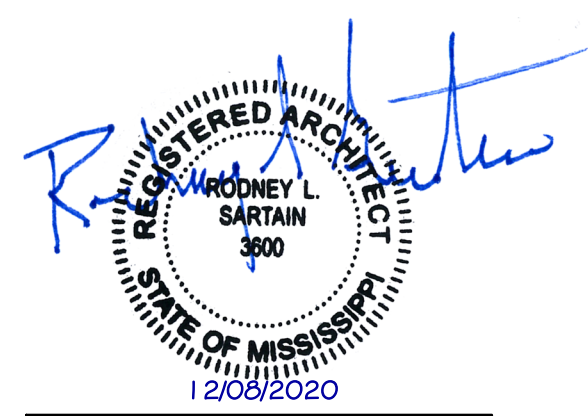
6 BOLLARD DETAIL  
SCALE : 1" = 1'-0"



7 DUMPSTER CANE BOLT DETAIL  
SCALE : 3" = 1'-0"

PAINT SCHEDULE	
PT1	SHERWIN WILLIAMS - 7668 - MARCH WIND
PT2	SHERWIN WILLIAMS - 6258 - TRICORN BLACK
PT3	SHERWIN WILLIAMS - 0052 - PEARL GRAY
NOTE USE SHERWIN WILLIAMS DIRECT TO METAL (DTM) ENAMEL IN SEMI-GLOSS SHEEN WHEN APPLIED TO METAL	

No.	Description	Date



PERMIT ISSUE