

NOTES AND LEGEND

The blue border line indicates the boundary of land subdivided by this map. The area within the blue border line is 18.065 acres. All distances and dimensions are shown in feet and decimals thereof. ASUE Indicates Public Service and Utility Easement. PE Indicates Planning Easement. PUE Indicates Public Utility Easement. SE Indicates Slope Easement. S Indicates a 3/4" Iron pipe monument set. C Indicates a 3/4" Iron pipe monument found unless noted otherwise. M Indicates a Standard City monument found. V Indicates a Standard City monument found. I Indicates NO Vehicular Access.

BASIS OF BEARINGS

The basis of bearings and grid coordinates shown are based upon the California State Coordinate System, Zone 3, as shown upon that certain Record of Survey, recorded June 21, 1966, filed in Book 211 of Maps & Pages 22 and 23 in the office of the County Recorder of the County of Santa Clara, State of California, to obtain grid distances multiply ground level distances by 0.999415.

TRACT N° 5568 EASTBROOK UNIT No. 6

CONSISTING OF TWO SHEETS
BEING A PORTION OF PARCEL 'B' OF THAT CERTAIN RECORD
OF SURVEY, BOOK 211, MAPS, PAGE 23, SANTA CLARA COUNTY
RECORDS & A PORTION OF THE TULARCTOS RANCHO
LYING ENTIRELY WITHIN THE CITY OF
MILPITAS CALIFORNIA
May, 1976

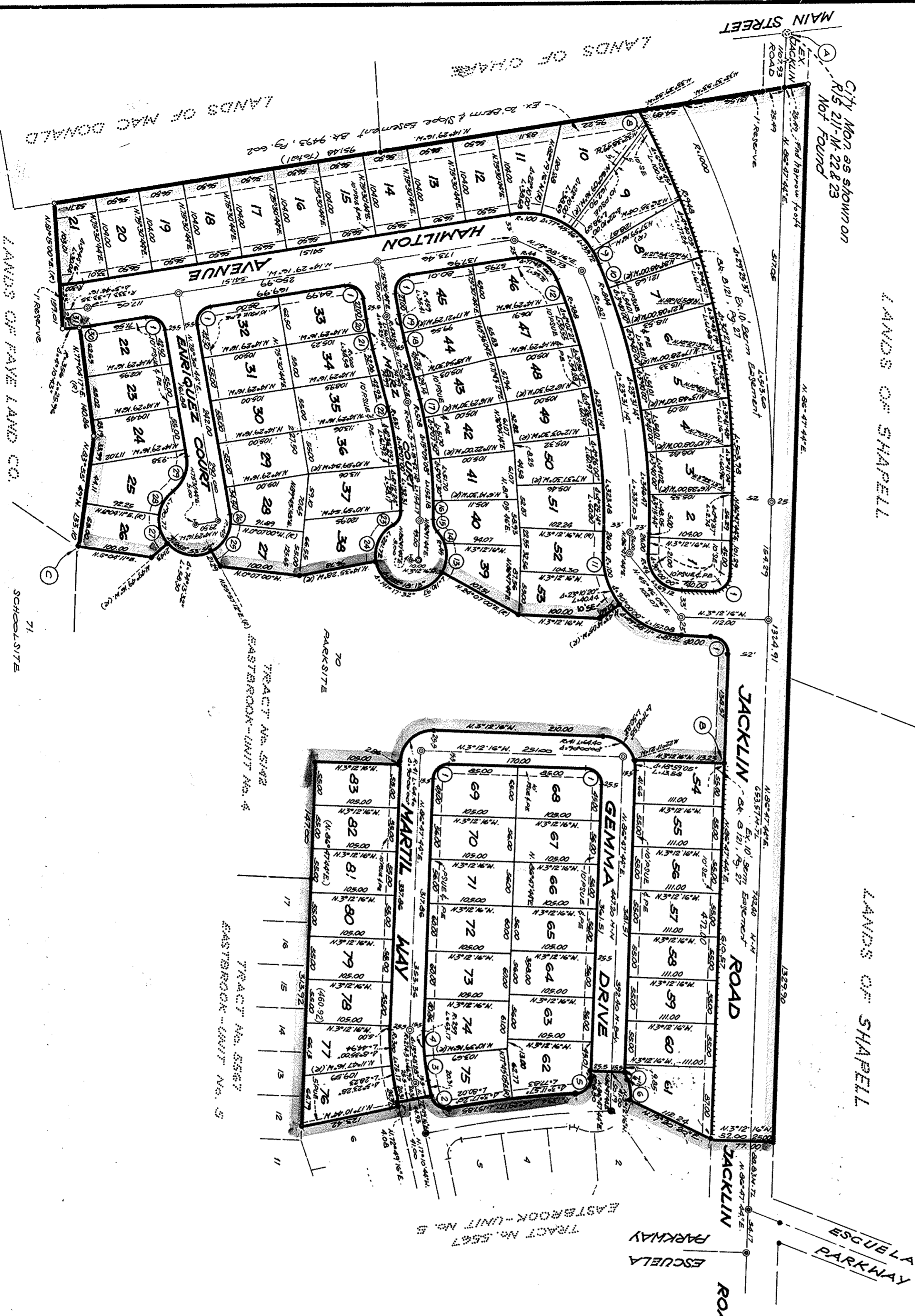
SCALE: 1" = 100'

CALIFORNIA COORDINATE POINTS			
PT.	Y	X	
A	347,551.44	1,571,280.01	
B	347,609.11	1,573,240.58	
C	346,784.01	1,573,039.68	

SOIL NOTE

A soil report was prepared for this subdivision by the firm of Petersen, Inc. dated March, 1970 entitled "Soil and Foundation Engineering Report for a Planned Unit Development 84, Milpitas, California."

CURVE DATA		
No.	DELTA	LENGTH RADUS
1	90°00'00"	31.42 20
2	88°21'31"	30.84 20
3	63°12'08"	29.49 239
4	72°10'00"	33.68 239
5	60°01'08"	29.38 20
6	32°39'22"	25.65 45
7	27°07'44"	9.70 20
8	17°01'03"	16.84 948
9	17°15'42"	19.66 100
10	15°53'21"	22.36 844
11	16°51'59"	29.42 100
12	27°44'52"	30.91 768
13	50°17'08"	39.49 45
14	22°29'09"	17.79 45
15	44°09'22"	15.71 20
16	2°25'08"	24.40 578
17	2°25'08"	24.38 578
18	7°33'01"	12.42 459
19	2°32'17"	22.99 459
20	46°35'15"	15.50 500
21	2°38'39"	23.08 500
22	1°48'13"	12.22 537
23	58°14'29"	20.34 20
24	68°04'27"	35.47 45
25	68°04'27"	44.03 45
26	1°22'42"	11.29 45
27	58°53'27"	43.90 45
28	42°30'34"	33.25 45
29	62°33'38"	49.40 45
30	1°53'33"	9.69 358
31	5°44'12"	35.65 358



MacRay & Sampa
CIVIL ENGINEERS
CALIFORNIA