

LEGEND

- COMPUTATION POINT, NOTHING FOUND OR SET
- SET 5/8" REBAR W/ALUM. CAP STAMPED "RCE 2/1984"
- FOUND 3/4" C.I.P. STAMPED "RCE 10761"
- FOUND 3/4" REBAR, 1 TAGGED "RCE 2/1984"
- FOUND AS NOTED.

REFERENCE

SIERRA SPRINGS #2 E-58
CORNER RECORD #980 AND #4395

DETAIL

5.87° 29' 07" E 553.97'
5.48° 37' 18" E 548.97'
ALSO STAMPED "WC"
ENCROACHING RET.
WALL & FENCE
N.T.S.

CORNER TIE

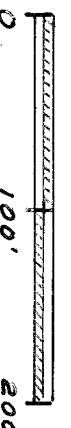
NO. 1/4 COR. OF SEC. 24 BEARS
(4 COURSES - RECORD):
N 24° 00' 00" E, 100.00'
N 58° 29' 37" E, 195.57'
S 88° 38' 15" E, 800.64'
N 00° 42' 48" W, 1316.25'

LINE TABLE

1	509° 29' 31" E, 115.17'	(509° 30' 00" E, 115.00')
2	574° 00' 19" E, 64.20'	(574° 00' 19" E, 64.20')
3	570° 18' 57" E, 80.82'	(570° 18' 57" E, 80.82')
4	572° 48' 04" W, 85.97'	(572° 48' 04" W, 85.97')
5	572° 53' 45" W, 85.15'	(572° 53' 45" W, 85.15')
6	576° 01' 09" E, 141.43'	(576° 01' 09" E, 141.43')
7	586° 46' 27" W, 24.99'	(586° 46' 27" W, 24.99')
8	575° 59' 04" W, 135.35'	(575° 59' 04" W, 135.35')
9	567° 20' 40" W, 92.07'	(567° 20' 40" W, 92.07')
10	567° 20' 28" W, 98.04'	(567° 20' 28" W, 98.04')
11	559° 21' 28" W, 100.08'	(559° 21' 28" W, 100.08')
12	559° 21' 26" W, 99.96'	(559° 21' 26" W, 99.96')
13	N 86° 33' 18" W, 88.96'	(N 86° 33' 18" W, 88.96')
14	N 86° 40' 14" W, 100.09'	(N 86° 40' 14" W, 100.09')
15	N 86° 41' 40" W, 140.96'	(N 86° 41' 40" W, 140.96')
16	N 86° 39' 09" W, 150.03'	(N 86° 39' 09" W, 150.03')
17	N 86° 39' 25" W, 125.07'	(N 86° 39' 25" W, 125.07')
18	N 61° 56' 53" W, 120.05'	(N 61° 56' 53" W, 120.05')
19	N 55° 43' 28" W, 179.37'	(N 55° 43' 28" W, 179.37')
20	N 75° 38' 22" W, 179.98'	(N 75° 38' 22" W, 179.98')
21	N 75° 38' 22" W, 179.98'	(N 75° 38' 22" W, 179.98')
22	N 27° 03' 12" E, 100.09'	(N 27° 03' 12" E, 100.09')
23	N 27° 03' 11" W, 164.93'	(N 27° 03' 11" W, 164.93')
24	N 34° 26' 35" W, 110.87'	(N 34° 26' 35" W, 110.87')
25	N 34° 26' 35" W, 110.87'	(N 34° 26' 35" W, 110.87')
26	N 34° 18' 47" W, 85.72'	(N 34° 18' 47" W, 85.72')
27	N 32° 08' 59" W, 185.20'	(N 32° 08' 59" W, 185.20')
28	N 32° 08' 59" W, 185.20'	(N 32° 08' 59" W, 185.20')
29	N 32° 08' 59" W, 185.20'	(N 32° 08' 59" W, 185.20')
30	N 32° 08' 59" W, 185.20'	(N 32° 08' 59" W, 185.20')
31	N 76° 41' 16" E, 157.20'	(N 76° 41' 16" E, 157.20')
32	N 37° 28' 44" E, 25.19'	(N 37° 28' 44" E, 25.19')
33	N 37° 35' 17" W, 161.76'	(N 37° 35' 17" W, 161.76')
34	N 26° 01' 15" E, 130.07'	(N 26° 01' 15" E, 130.07')
35	N 26° 29' 35" E, 174.97'	(N 26° 29' 35" E, 174.97')
36	N 81° 01' 46" E, 170.02'	(N 81° 01' 46" E, 170.02')
37	N 88° 57' 46" E, 105.02'	(N 88° 57' 46" E, 105.02')
38	N 89° 00' 31" E, 104.87'	(N 89° 00' 31" E, 104.87')
39	N 61° 39' 01" E, 100.19'	(N 61° 39' 01" E, 100.19')
40	N 61° 25' 00" E, 99.98'	(N 61° 25' 00" E, 99.98')
41	N 61° 30' 33" E, 100.07'	(N 61° 30' 33" E, 100.07')
42	N 61° 31' 48" E, 104.87'	(N 61° 31' 48" E, 104.87')
43	N 86° 53' 51" E, 85.99'	(N 86° 53' 51" E, 85.99')
44	N 86° 53' 51" E, 85.99'	(N 86° 53' 51" E, 85.99')
45	N 86° 53' 51" E, 85.99'	(N 86° 53' 51" E, 85.99')
46	N 86° 53' 51" E, 85.99'	(N 86° 53' 51" E, 85.99')
47	N 86° 53' 51" E, 85.99'	(N 86° 53' 51" E, 85.99')
48	N 86° 53' 51" E, 85.99'	(N 86° 53' 51" E, 85.99')
49	N 86° 53' 51" E, 85.99'	(N 86° 53' 51" E, 85.99')
50	N 86° 53' 51" E, 85.99'	(N 86° 53' 51" E, 85.99')
51	N 86° 53' 51" E, 85.99'	(N 86° 53' 51" E, 85.99')
52	N 86° 53' 51" E, 85.99'	(N 86° 53' 51" E, 85.99')
53	N 86° 53' 51" E, 85.99'	(N 86° 53' 51" E, 85.99')
54	N 86° 53' 51" E, 85.99'	(N 86° 53' 51" E, 85.99')
55	N 86° 53' 51" E, 85.99'	(N 86° 53' 51" E, 85.99')
56	N 86° 53' 51" E, 85.99'	(N 86° 53' 51" E, 85.99')
57	N 86° 53' 51" E, 85.99'	(N 86° 53' 51" E, 85.99')
58	N 86° 53' 51" E, 85.99'	(N 86° 53' 51" E, 85.99')
59	N 86° 53' 51" E, 85.99'	(N 86° 53' 51" E, 85.99')
60	N 86° 53' 51" E, 85.99'	(N 86° 53' 51" E, 85.99')
61	N 86° 53' 51" E, 85.99'	(N 86° 53' 51" E, 85.99')
62	N 86° 53' 51" E, 85.99'	(N 86° 53' 51" E, 85.99')
63	N 86° 53' 51" E, 85.99'	(N 86° 53' 51" E, 85.99')
64	N 86° 53' 51" E, 85.99'	(N 86° 53' 51" E, 85.99')
65	N 86° 53' 51" E, 85.99'	(N 86° 53' 51" E, 85.99')
66	N 86° 53' 51" E, 85.99'	(N 86° 53' 51" E, 85.99')
67	N 86° 53' 51" E, 85.99'	(N 86° 53' 51" E, 85.99')
68	N 86° 53' 51" E, 85.99'	(N 86° 53' 51" E, 85.99')
69	N 86° 53' 51" E, 85.99'	(N 86° 53' 51" E, 85.99')
70	N 86° 53' 51" E, 85.99'	(N 86° 53' 51" E, 85.99')
71	N 86° 53' 51" E, 85.99'	(N 86° 53' 51" E, 85.99')
72	N 86° 53' 51" E, 85.99'	(N 86° 53' 51" E, 85.99')
73	N 86° 53' 51" E, 85.99'	(N 86° 53' 51" E, 85.99')
74	N 86° 53' 51" E, 85.99'	(N 86° 53' 51" E, 85.99')
75	N 86° 53' 51" E, 85.99'	(N 86° 53' 51" E, 85.99')
76	N 86° 53' 51" E, 85.99'	(N 86° 53' 51" E, 85.99')
77	N 86° 53' 51" E, 85.99'	(N 86° 53' 51" E, 85.99')
78	N 86° 53' 51" E, 85.99'	(N 86° 53' 51" E, 85.99')
79	N 86° 53' 51" E, 85.99'	(N 86° 53' 51" E, 85.99')
80	N 86° 53' 51" E, 85.99'	(N 86° 53' 51" E, 85.99')
81	N 86° 53' 51" E, 85.99'	(N 86° 53' 51" E, 85.99')
82	N 86° 53' 51" E, 85.99'	(N 86° 53' 51" E, 85.99')
83	N 86° 53' 51" E, 85.99'	(N 86° 53' 51" E, 85.99')
84	N 86° 53' 51" E, 85.99'	(N 86° 53' 51" E, 85.99')
85	N 86° 53' 51" E, 85.99'	(N 86° 53' 51" E, 85.99')
86	N 86° 53' 51" E, 85.99'	(N 86° 53' 51" E, 85.99')
87	N 86° 53' 51" E, 85.99'	(N 86° 53' 51" E, 85.99')
88	N 86° 53' 51" E, 85.99'	(N 86° 53' 51" E, 85.99')
89	N 86° 53' 51" E, 85.99'	(N 86° 53' 51" E, 85.99')
90	N 86° 53' 51" E, 85.99'	(N 86° 53' 51" E, 85.99')
91	N 86° 53' 51" E, 85.99'	(N 86° 53' 51" E, 85.99')
92	N 86° 53' 51" E, 85.99'	(N 86° 53' 51" E, 85.99')
93	N 86° 53' 51" E, 85.99'	(N 86° 53' 51" E, 85.99')
94	N 86° 53' 51" E, 85.99'	(N 86° 53' 51" E, 85.99')
95	N 86° 53' 51" E, 85.99'	(N 86° 53' 51" E, 85.99')
96	N 86° 53' 51" E, 85.99'	(N 86° 53' 51" E, 85.99')
97	N 86° 53' 51" E, 85.99'	(N 86° 53' 51" E, 85.99')
98	N 86° 53' 51" E, 85.99'	(N 86° 53' 51" E, 85.99')
99	N 86° 53' 51" E, 85.99'	(N 86° 53' 51" E, 85.99')
100	N 86° 53' 51" E, 85.99'	(N 86° 53' 51" E, 85.99')



SCALE



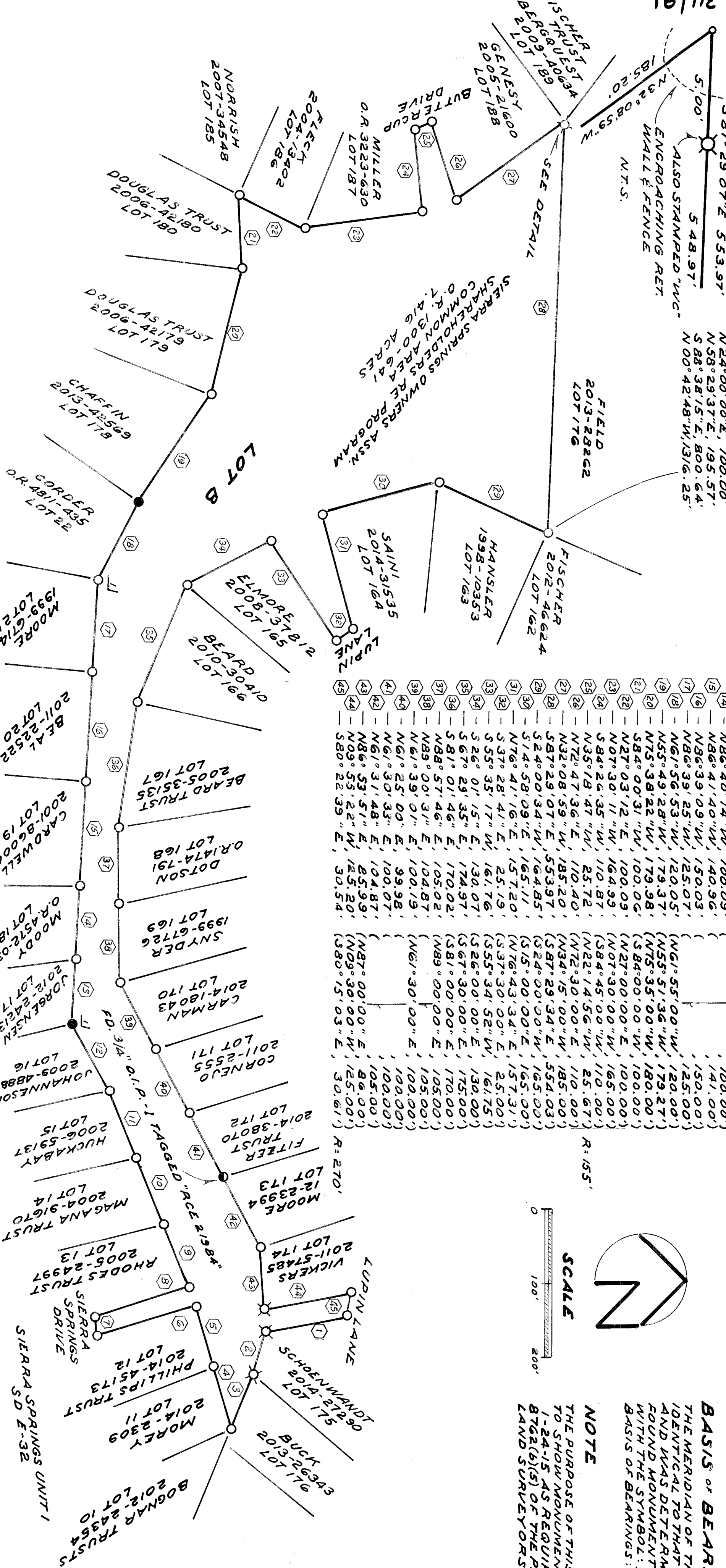
NOTE

THE PURPOSE OF THIS SURVEY IS TO SHOW MONUMENTS SET ON 1-24-15 AS REQUIRED BY SECTION 876(b)(5) OF THE PROFESSIONAL LAND SURVEYORS' ACT.

BASIS OF BEARINGS

THE MERIDIAN OF THIS SURVEY IS IDENTICAL TO THAT OF SUBD. E-58 AND WAS DETERMINED FROM FOUND MONUMENTS NOTED HEREON WITH THE SYMBOL: II
BASIS OF BEARINGS: N 86° 40' 00" W

RECORD OF SURVEY 16/hc
A PORTION OF THE N. 1/2 OF SEC. 24,
T.10N., R.12E., M.D.B.F.M.
BEING LOT B OF SIERRA SPRINGS #2.
COUNTY OF EL DORADO
STATE OF CALIFORNIA
MARCH 2015 E-58



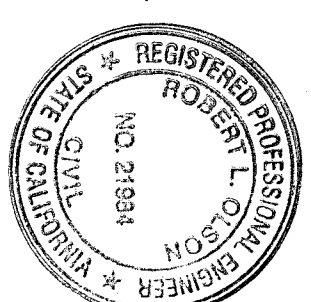
SURVEYOR'S STATEMENT

THIS MAP CORRECTLY REPRESENTS A SURVEY MADE BY ME OR UNDER MY DIRECTION IN CONFORMANCE WITH THE REQUIREMENTS OF THE PROFESSIONAL LAND SURVEYORS' ACT AT THE REQUEST OF THE SIERRA SPRINGS OWNERS ASSN. IN JANUARY 2015.

DATED: 3/2/15

Robert L. Olson

ROBERT L. OLSON
R.C.E. 21984



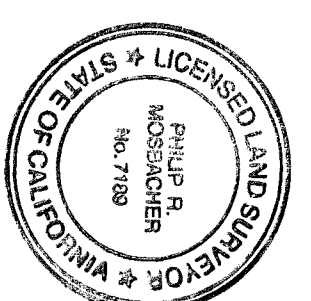
COUNTY SURVEYOR'S STATEMENT

THIS MAP HAS BEEN EXAMINED IN ACCORDANCE WITH SECTION 876G OF THE PROFESSIONAL LAND SURVEYORS' ACT THIS 19TH DAY OF MARCH, 2015.

RICHARD L. BRINER

RICHARD L. BRINER, L.S. 5084
COUNTY SURVEYOR
COUNTY OF EL DORADO, CALIFORNIA

BY: Philip R. Mosbacher, L.S. 7189
DEPUTY SURVEYOR
COUNTY OF EL DORADO, CALIFORNIA



COUNTY RECORDER'S STATEMENT

FILED THIS 30 DAY OF March 2015, AT 10:31:30 IN BOOK 34 OF RECORD OF SURVEYS AT PAGE 91, AT THE REQUEST OF THE SIERRA SPRINGS OWNERS ASSN.

Doc. No. 2015-10853

William E. Schulte

WILLIAM E. SCHULTE
COUNTY RECORDER, CLERK
COUNTY OF EL DORADO, CALIFORNIA
BY: Kaitlyn J. Hall
DEPUTY

34/91

34/91