

# CITY ENGINEER'S CERTIFICATE

I, A. R. TURRILLI, Hereby certify that this map, designated as "TRACT NO. 4366" has been examined by me; that the subdivision shown thereon is substantially the same as it appeared on the approved tentative map and any approved alterations thereof; that all provisions of the California Subdivision Map Act, as amended, and of any local ordinances applicable at the time of approval of the tentative map, have been complied with and I am satisfied that said map is technically correct.

A. R. TURRILLI  
City Engineer

August 14, 1967 by George E. Fowles  
date Deputy

## PLANNING COMMISSION'S CERTIFICATE

Approved by the City Planning Commission of the City of San Jose at a regular meeting of said Commission held on the 25th day of July, 1967.

Paula B. Bell

SANFORD GETREUF, Secretary  
of San Jose Planning Commission

## CITY CLERK'S CERTIFICATE

I hereby certify that the hereon final map of TRACT NO. 4366, was approved by the City Council of the City of San Jose at a regular meeting of said Council held on the 14 day of August, 1967, and that said Council did at said meeting accept the dedication of all streets and portions of streets and easements offered for dedication and shown on said map within said subdivision.

FRANCIS L. GREINER, City Clerk  
and Ex-Officio Clerk of the City Council of San Jose, California

by Francis L. Greiner  
Deputy

## CIVIL ENGINEER'S CERTIFICATE

I, DONALD G. MACKAY, hereby certify that I am a Registered Civil Engineer of the State of California, that this map, consisting of 1 sheet, correctly represents a survey made under my supervision during JULY, 1967, that the survey is true and complete as shown, and that all monuments shown hereon actually exist or will be placed by AUG. 1969, and that said monuments are sufficient to enable the survey to be retraced and that their positions are correctly shown.

DONALD G. MACKAY, Registered  
Civil Engineer, No. 7184

by Donald G. Mackay

## COUNTY RECORDER'S CERTIFICATE

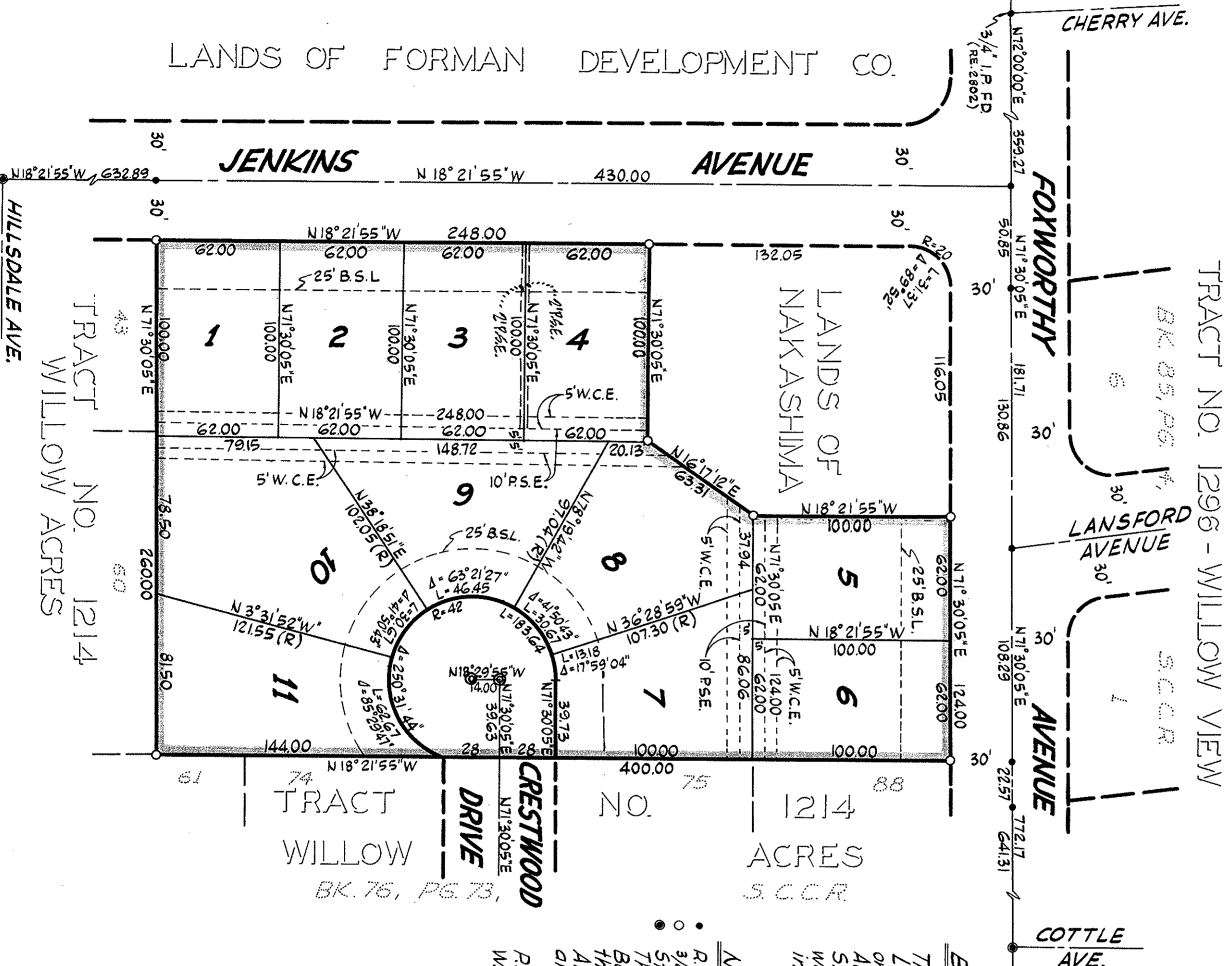
File No. 3270379. Fee \$ 5.00  
dollars plus  
Accepted for record and filed in Book 327  
of Maps at Page 164  
Santa Clara County Records, this 16th  
day of August, 1967, at  
3:32 P.M.

by George E. Fowles  
County Recorder

# TRACT NO. 4366

CONSISTING OF ONE SHEET  
BEING A PORTION OF NARVAEZ RANCHO & LYING WITHIN THE  
CITY OF  
SAN JOSE,  
CALIFORNIA

SCALE 1"=50' - JULY 1967.



## BASIS OF BEARINGS

The Bearing S71°30'05"W along the Center Line of Foxworthy Avenue, as shown on the Map of Tract No. 1214, Willow Acres, recorded in Book 76, Page 33, S.C.C.R., on 7th day of March, 1957, was taken as the Basis of Bearings shown hereon.

## NOTES & LEGEND

- R.R. Spk. fcl. or as otherwise noted.
- 3/4" I.P. to be set
- Std. City Mon found
- The blue border line indicates the Boundary of Land Subdivided by this Map.
- All dimensions are shown in feet and Decimals thereof.
- P.S.E. - Public Service Easement
- W.C.E. - Wire Clearance Easement

## OWNER'S CERTIFICATE

We hereby certify that we are the owners of or have some right, title or interest in and to the real property included within the subdivision shown upon the hereon map; that we are the only persons whose consent is necessary to pass a clear title to said real property; that we hereby consent to the making of said map and subdivision as shown within the blue line and that we hereby offer for dedication to public use all streets and portions of streets not heretofore existing as shown on the hereon map within said subdivision, and we also dedicate easements for any and all public uses under, upon and over said streets and said portions thereof.

We also hereby dedicate for public use easements for light and air on or over those certain strips of land lying between the lines of streets and the dashed lines each designated as "B.S.L." / "BUILDING SETBACK LINE" as shown on said map within said subdivision, such strips to be kept open and free from buildings and structures of any kind except public service structures, irrigation systems and appurtenances thereto and lawful levee overhangs. We also hereby dedicate to public use easements for any and all public service facilities including poles, wires, conduits, storm sewers, sanitary sewers and gas, water and heat mains and all public utilities and all appurtenances to the above under, on and over those certain strips of land lying between the lines of lots and the dashed lines each designated as "P.S.E." / "PUBLIC SERVICE EASEMENTS", said Public Service Easements to be kept free and clear of buildings and structures of any kind except lawful fences, irrigation systems and public utility structures. We further hereby dedicate to public use easements for wire clearance purposes only over those certain areas designated as "W.C.E." - Wire Clearance Easement: Such easement to be limited to buildings and structures and appurtenances thereto which have a maximum height of fifteen (15) feet above the grade of the ground line of poles.

OWNER: CHARTER CONSTRUCTION CO., A CORPORATION

By: Morton M. Schneider

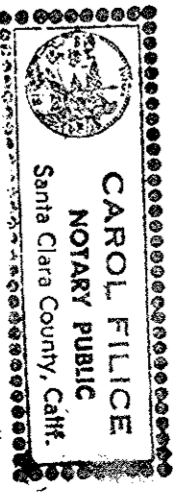
MORTON M. SCHNEIDER  
VICE PRESIDENT

STATE OF CALIFORNIA )  
COUNTY OF SANTA CLARA ) SS.

On this 3rd day of August, 1967, before me the undersigned, a Notary Public in and for said County and State, personally appeared Morton M. Schneider and Carol Filice, known to me to be the Vice-President and President respectively of the Corporation that executed the within instrument and known to me to be the persons who executed it on behalf of said Corporation, and acknowledged to me that such Corporation executed the same pursuant to its by-laws or a resolution of its Board of Directors, as Owners.

Notary Public:

Carol Filice



**MacRay & Samps**

CIVIL ENGINEERS  
347 COMMERCIAL STREET

SAN JOSE

CALIFORNIA