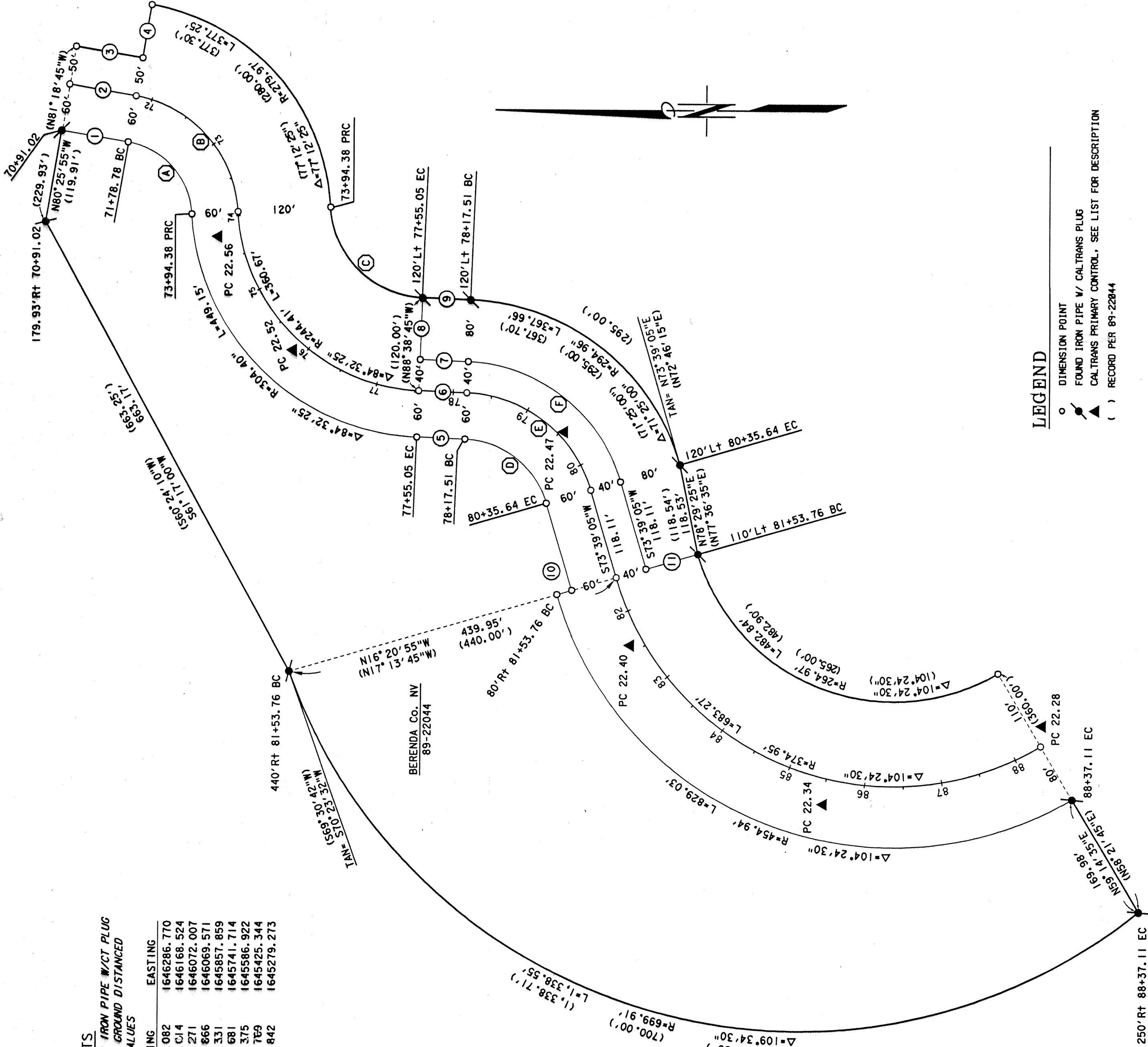


FOUND MONUMENTS
MONUMENTS ARE FOUND 1" GALVANIZED IRON PIPE W/CT PLUG
STATIONS AND OFFSETS SHOWN ARE GROUND DISTANCED
COORDINATES ARE GRID VALUES

STATION	OFFSET	NORTHING	EASTING
70+91.02	60.00' Rt	751103.082	1646286.770
70+91.02	179.93' Rt	751123.014	1646168.524
77+55.05	120.00' Lt	750634.271	1646072.007
78+17.51	120.00' Lt	750571.866	1646069.571
80+35.64	120.00' Lt	750300.331	1645857.859
81+53.76	110.00' Lt	750276.681	1645741.714
81+53.76	440.00' Rt	750804.375	1645586.922
88+37.11	60.00' Rt	749789.769	1645425.344
88+37.11	250.00' Rt	749702.842	1645279.273



CURVE TABLE

DISTANCES IN CURVE TABLE SHOWN ARE GRID DISTANCED

NO	A	R	L
(A)	77°12'25"	OLD"R/W" 99.99'	134.74'
(B)	77°12'25"	CL 159.59'	215.57'
(C)	84°32'25"	"R/W" 124.42'	183.59'
(D)	(84°32'25")	(124.44')	(183.61')
(E)	71°25'00"	OLD"R/W" 114.99'	143.33'
(F)	71°25'00"	CL 194.98'	218.13'
(G)	71°25'00"	OLD"R/W" 214.97'	267.96'

LINE TABLE

DISTANCES IN LINE TABLE SHOWN
ARE GRID DISTANCED

NO	BEARING	DISTANCE
(1)	N09°34'05"E	87.75'
(2)	N09°34'05"E	87.75'
(3)	N09°34'05"E	87.75'
(4)	N08°41'15"E	87.75'
(5)	N80°25'55"W	69.99'
(6)	(N80°25'55"W)	(70.00')
(7)	N02°14'05"E	62.45'
(8)	N02°14'05"E	62.45'
(9)	N87°45'55"W	79.99'
(10)	(N88°38'45"W)	(79.99')
(11)	N02°14'05"E	62.45'
(12)	(N01°21'15"E)	(62.46')
(13)	N16°20'55"W	20.00'
(14)	N16°20'55"W	20.00'
(15)	N16°20'55"W	69.99'

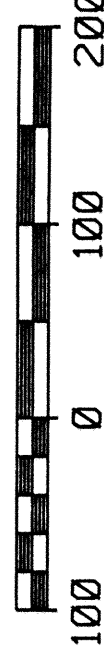
LEGEND

- DIMENSION POINT
- FOUND IRON PIPE W/ CALTRANS PLUG
- ▲ CALTRANS PRIMARY CONTROL, SEE LIST FOR DESCRIPTION
- () RECORD PER 89-22044

MAPS
DRAWER 68
PAGE 36

RECORD OF SURVEY
MONUMENTATION MAP

STATE HIGHWAY 162



COL	RTS	P.M.	SHEET NUMBER
MEN	162	22.3/22.6	2 OF 2